

一樓平面



註：按電柱基座位置詳見 S-11

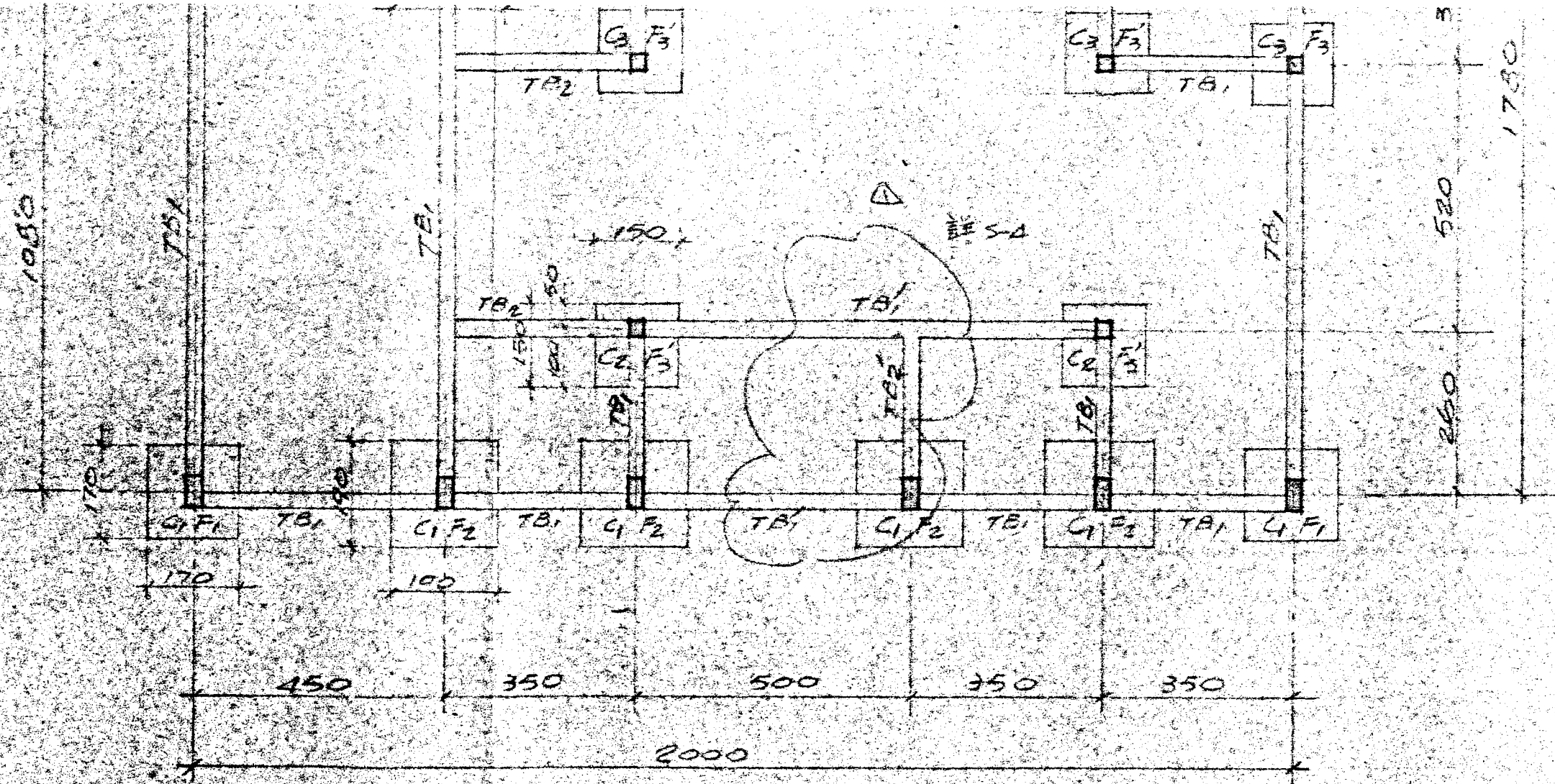


同棧工程顧問股份有限公司
 T. Y. LIN, TAIWAN, INCORPORATED
 STRUCTURAL ENGINEERS
 TAIPEI, TAIWAN, REPUBLIC OF CHINA

DRAWN BY: [Signature]
 DESIGNED BY: [Signature]
 CHECKED BY:
 APPROVED BY:

行政院國家科學委員會地熱發電小組
 先進型地熱發電廠新建工程
 基礎及一樓結構平面圖

DRAWING NO.
 S-1/A
 JOB NO.
 DATE 8/20



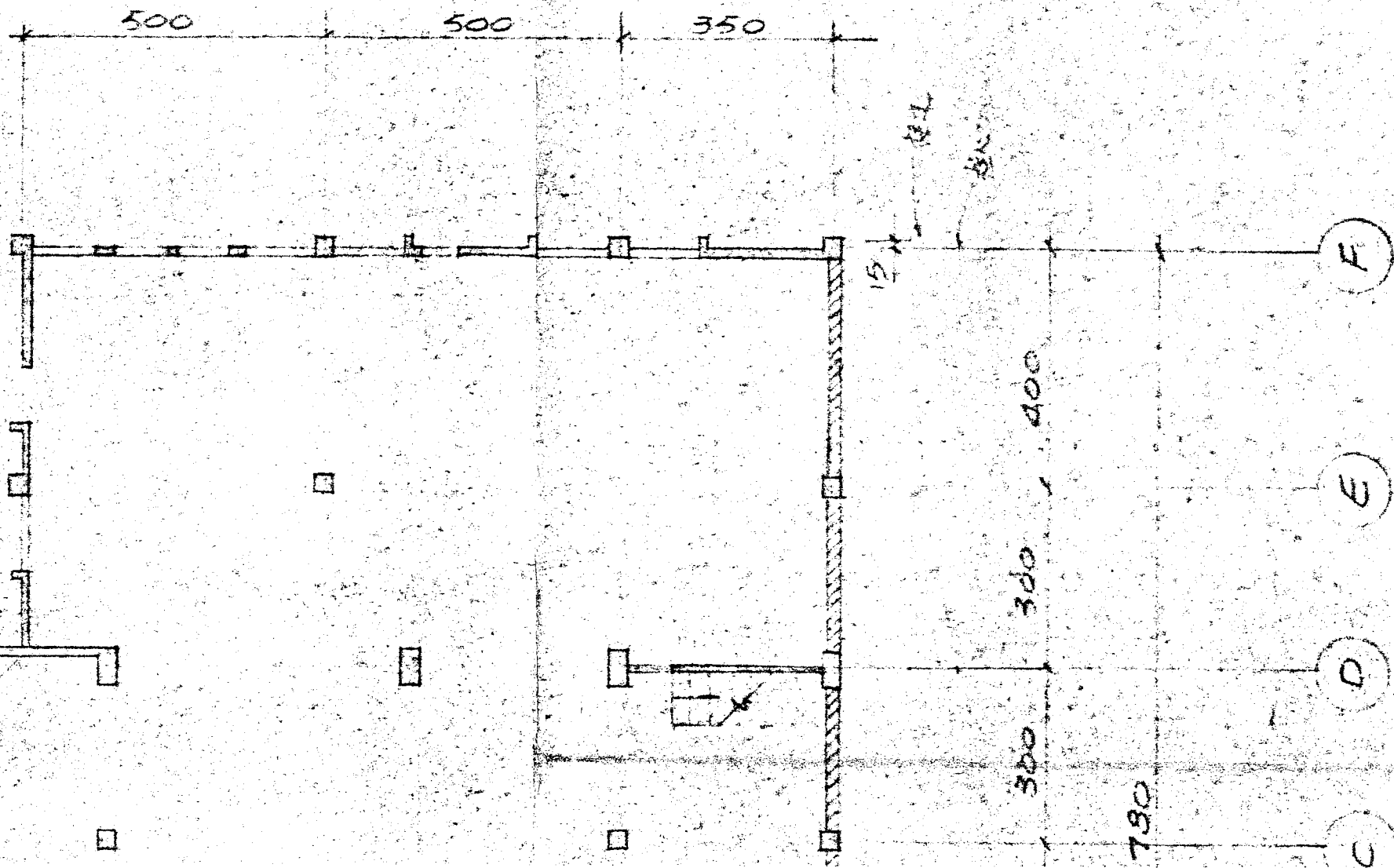
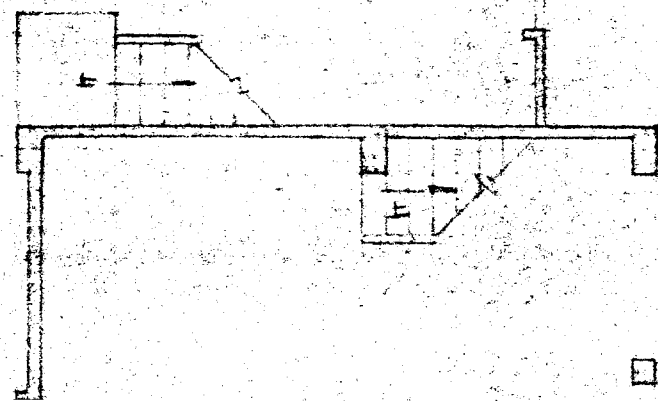
基礎平面圖

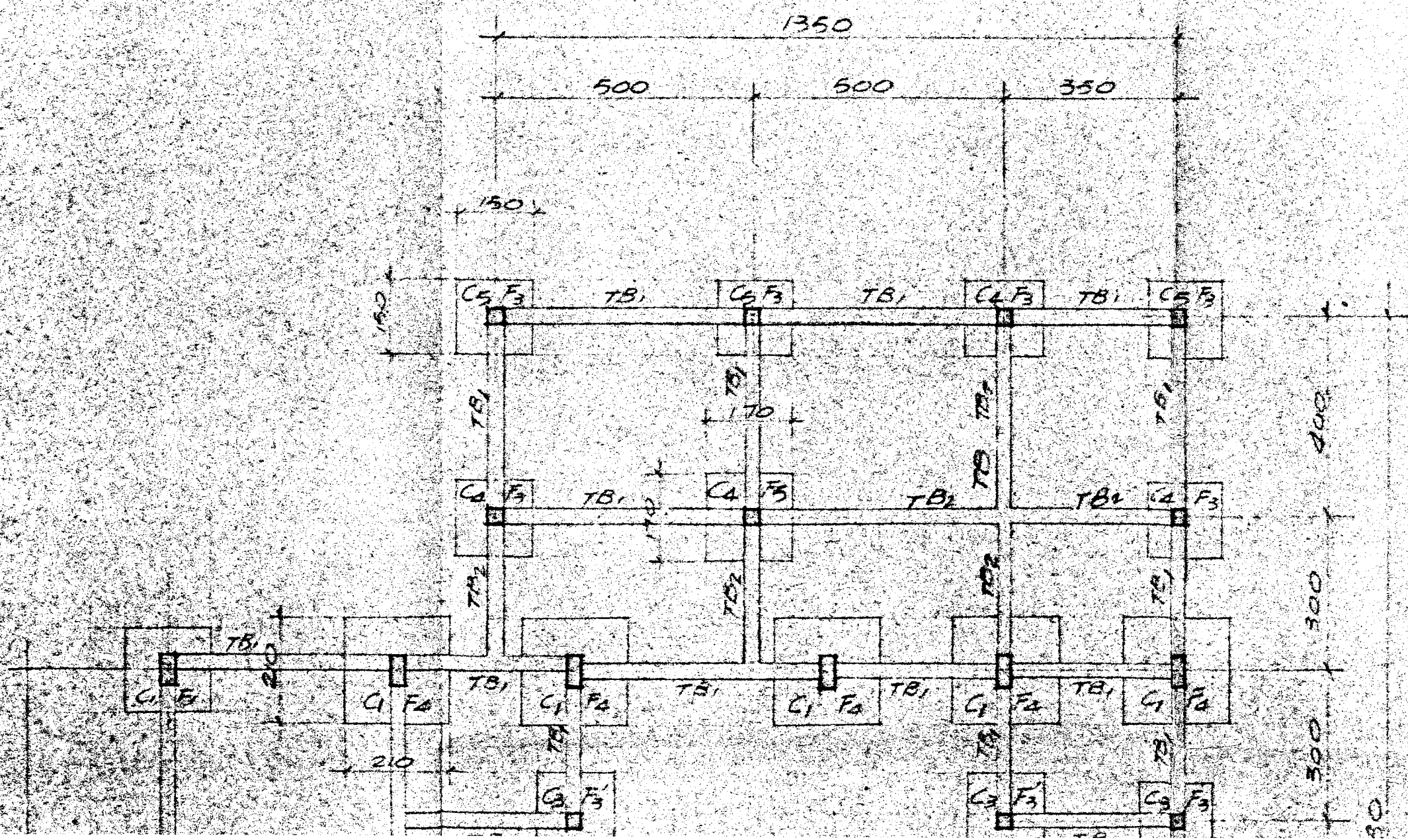
註：透電機基座詳見 5-11

REVISION	DATE	DESCRIPTION	APPROVAL
△	67.1.26	TB 下降至基礎面	

林同棧工程
T. Y. LIN, TAIM
STRUC
TAIPEI, TAIW

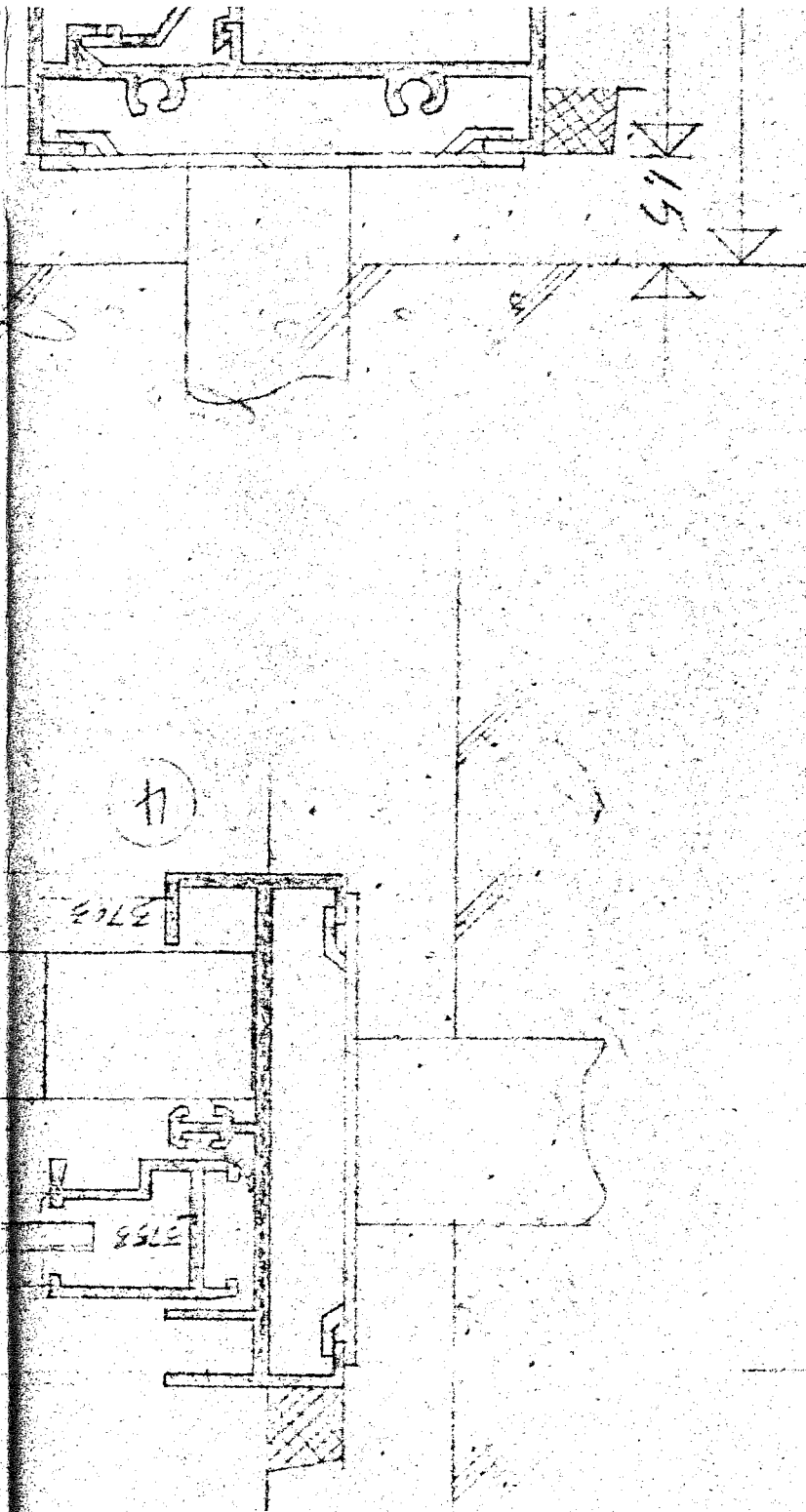
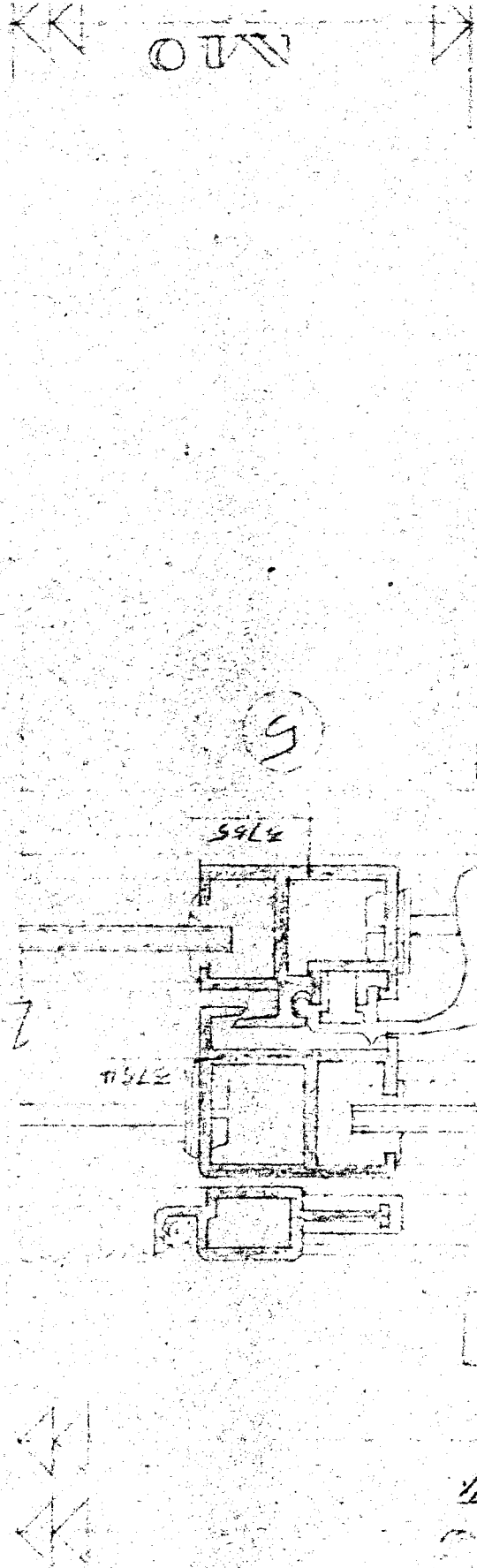
3000
50
1000



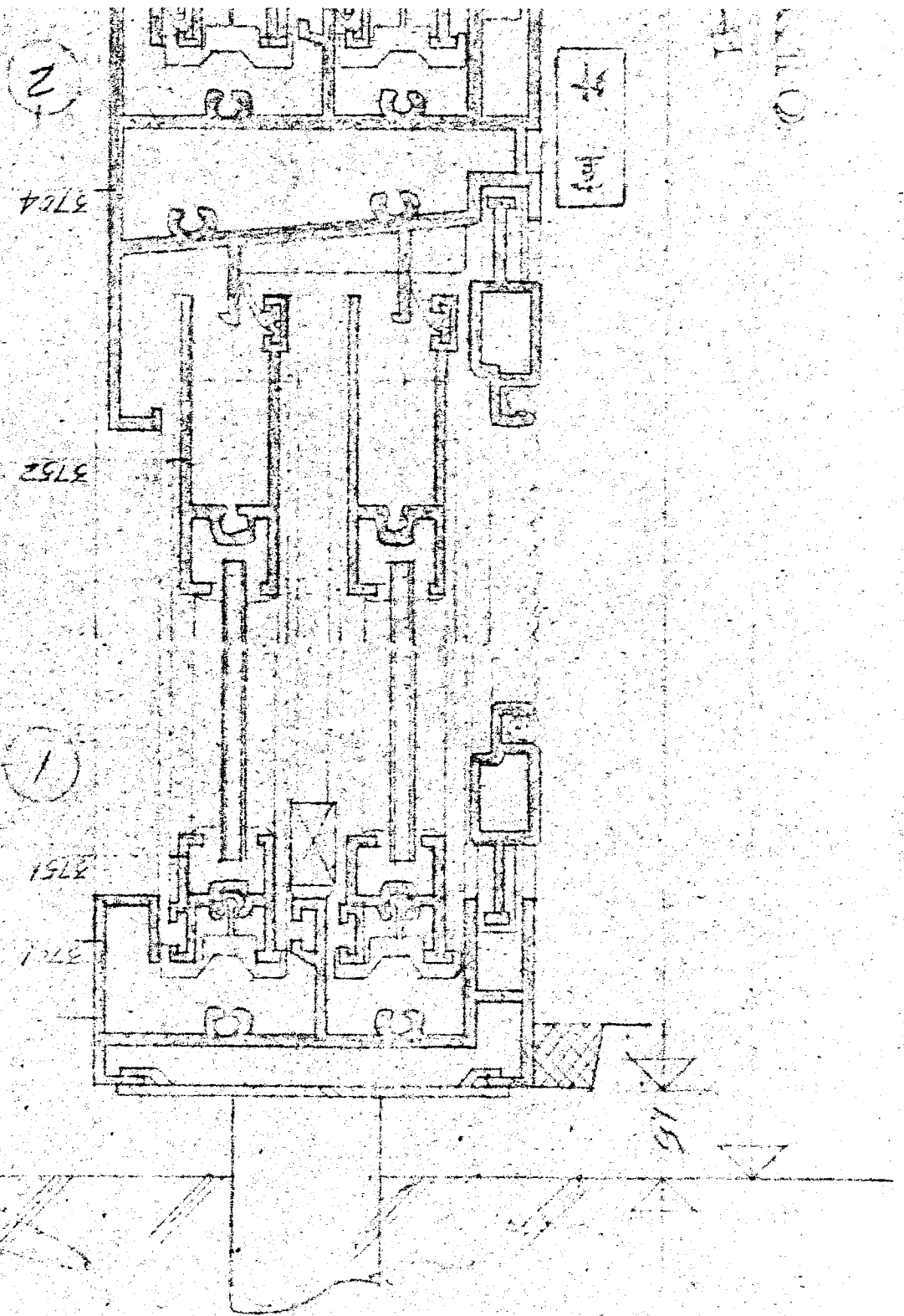


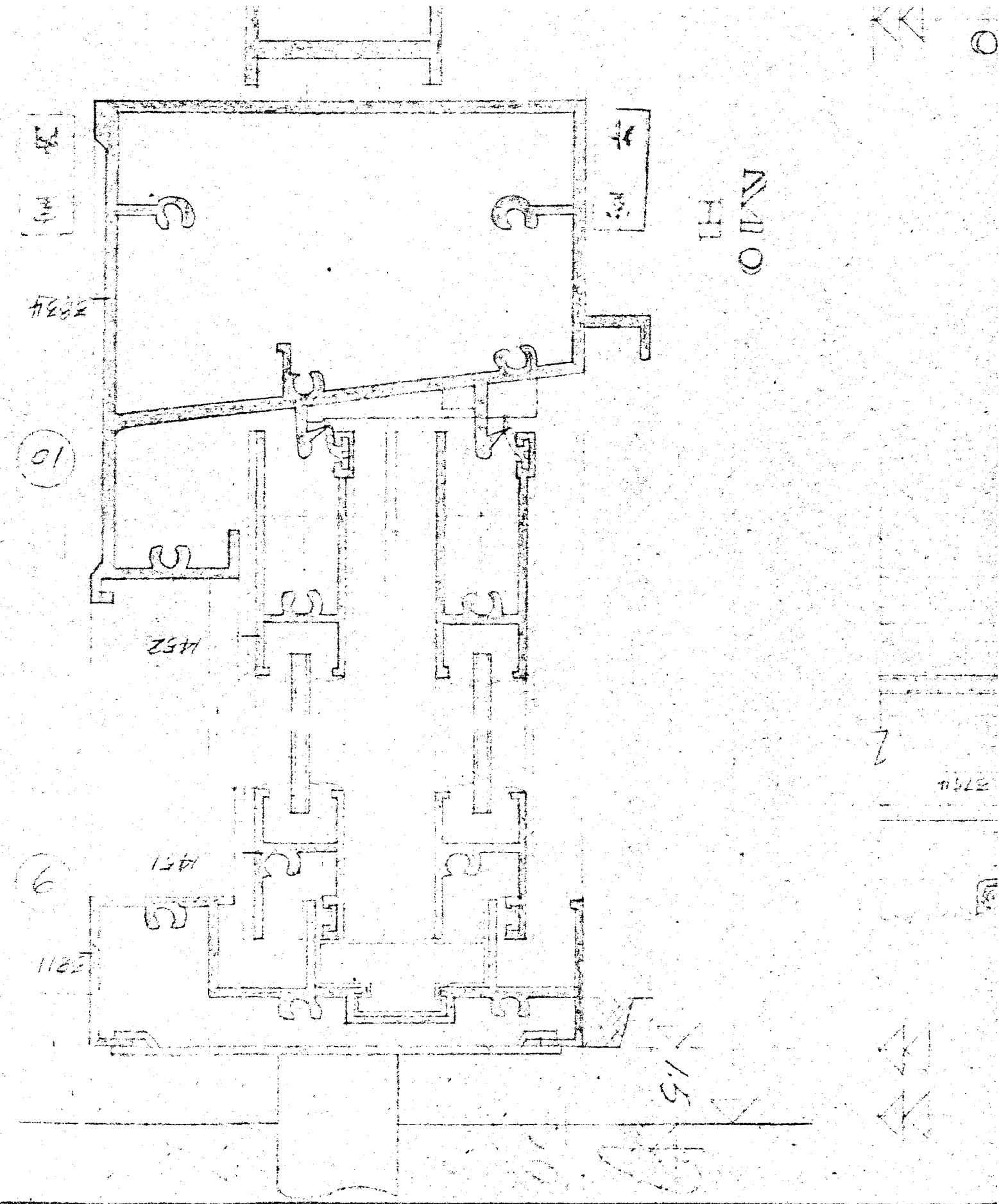
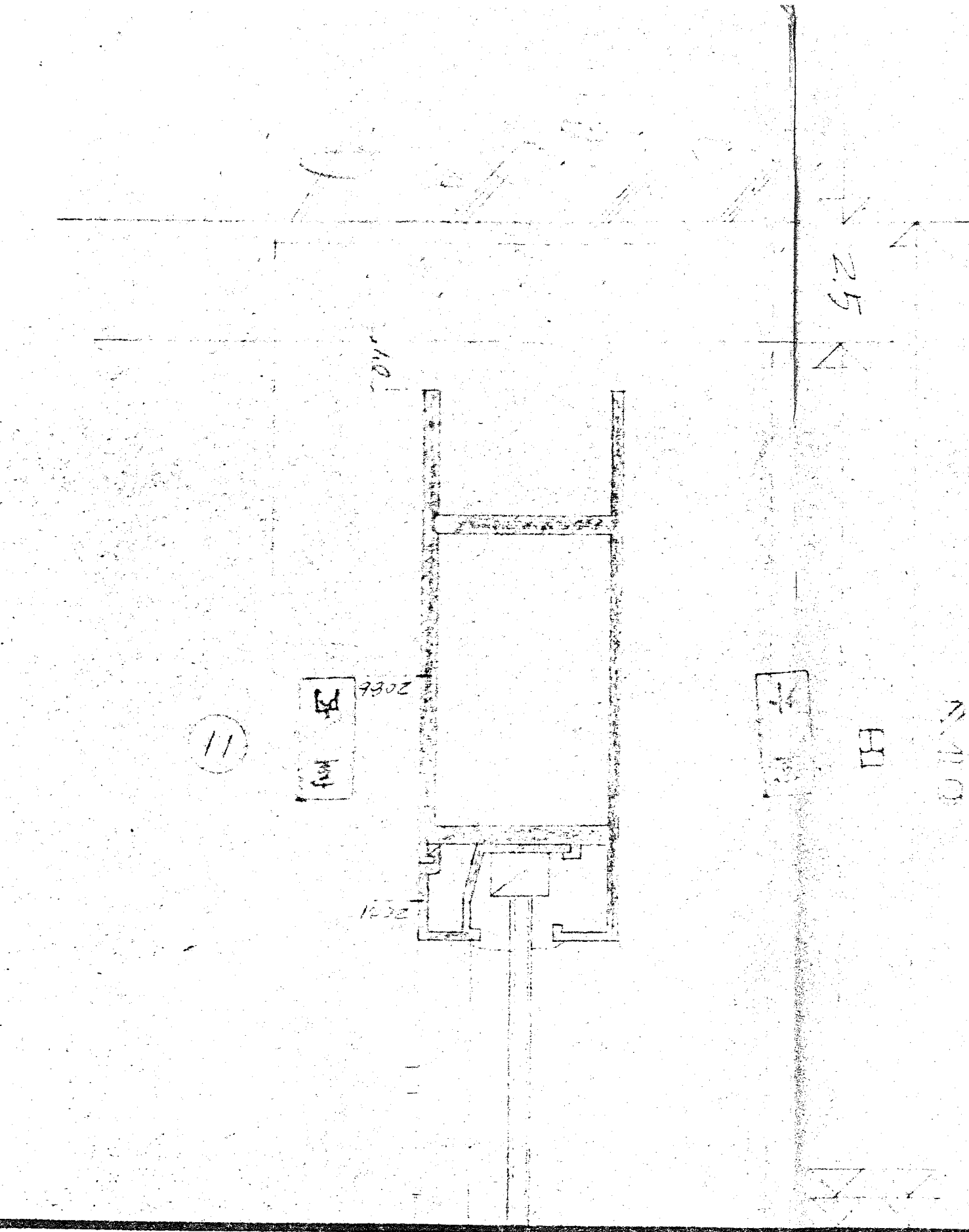
N110

N110



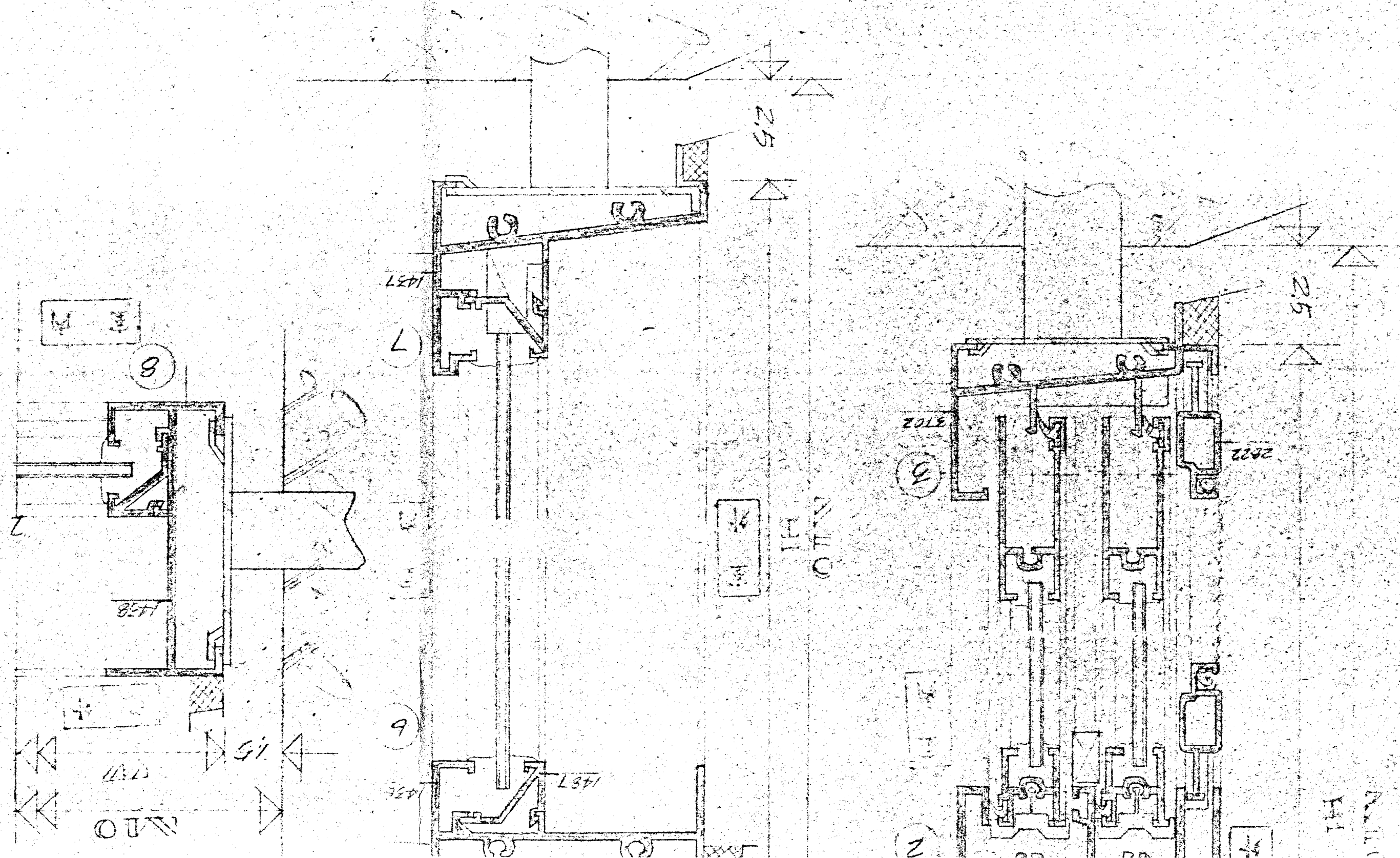
N110





林同棧工程
T.Y. LIN, TAIN
STRUC
TAIPEI, TAIN

REVISION	DATE	DESCRIPTION	APPROVAL



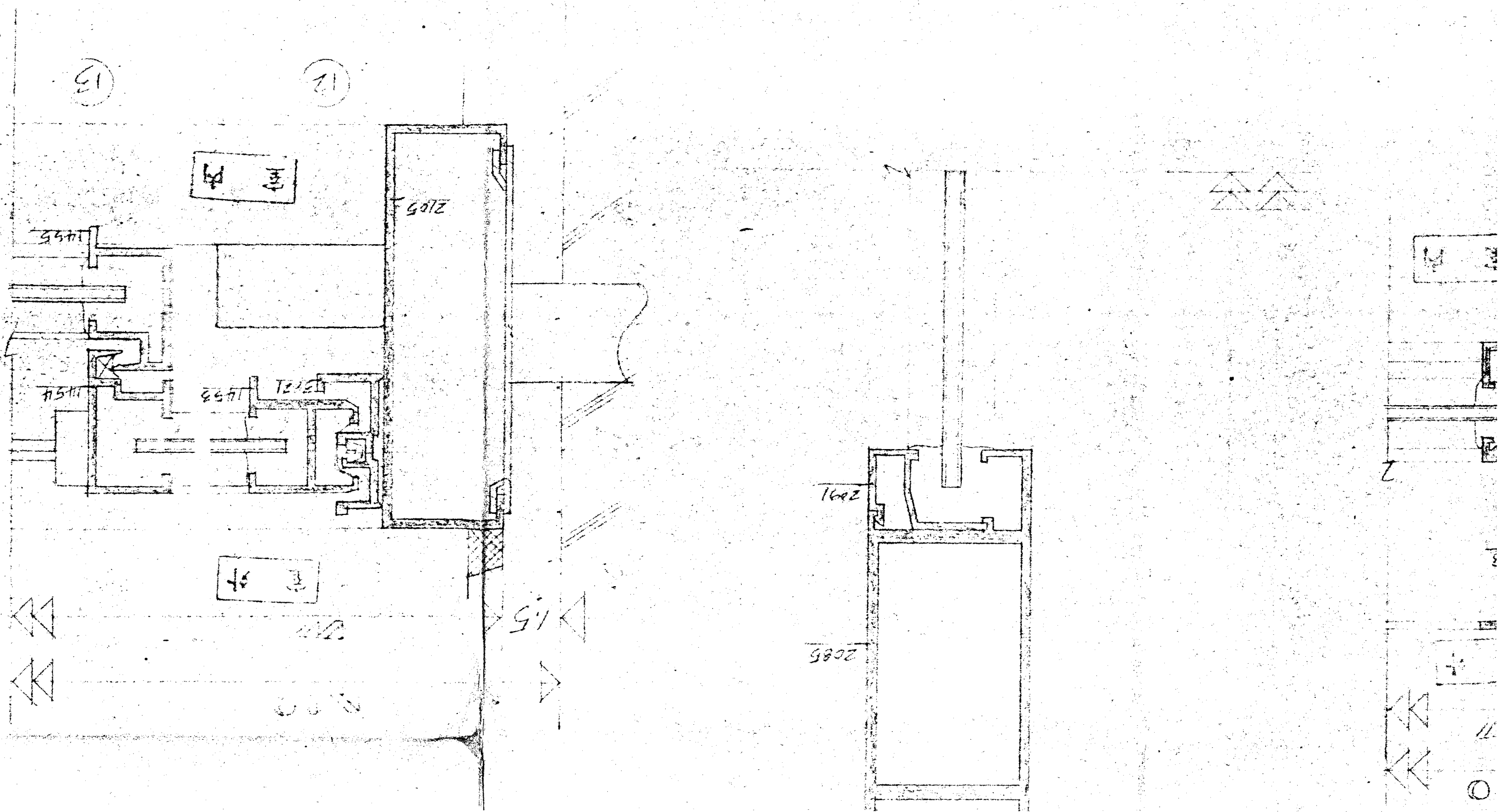
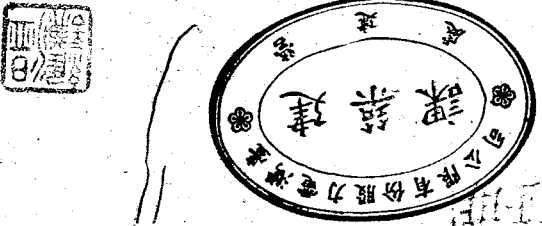
TAI
NAIN

同機工程顧問股份有限公司
 T.Y. LIN, TAIWAN, INCORPORATED
 STRUCTURAL ENGINEERS
 TAIPEI, TAIWAN, REPUBLIC OF CHINA

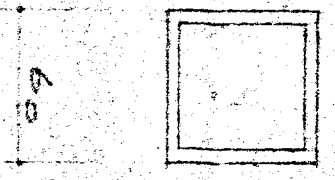
DRAWN BY: 洪明松
 DESIGNED BY: 洪明松
 CHECKED BY: 洪明松
 APPROVED BY: 洪明松

行政院國家科學委員會地熱發電小組
 先導型地熱發電廠新建工程

DRAWING NO. A-9
 JOB NO.
 DATE



1.5" 玻璃
或全铝
窗框 70mm
铝材



60

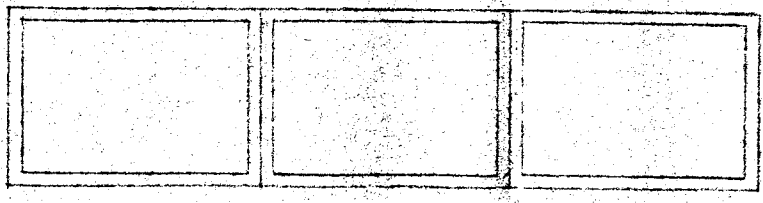
60

1. 全铝材
2. 断桥铝 CE-200F
或全铝
3. 玻璃 5mm 清

CFE

W3 固定铝窗 (300x70)

3 框
CK-70
或全铝
窗框 5mm



1# 全铝材

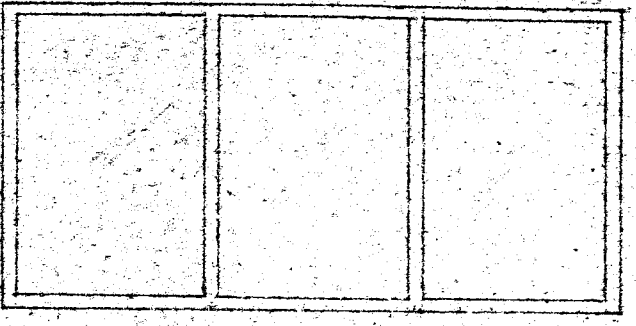
1. 全铝材
2. 断桥铝 CE-200F
材料 AM4014
或全铝
3. 玻璃 5mm 清
4. 窗上框 70-
120x30mm 铝材

2 FL

90

70

100 100 100



120

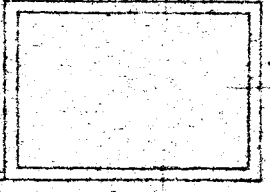
80 80 80

240

1. 全铝材
2. 断桥铝 CE-200F
或全铝
3. 玻璃 5mm 清

CFE

W3 固定铝窗 (100x70)



8

6

7

FL

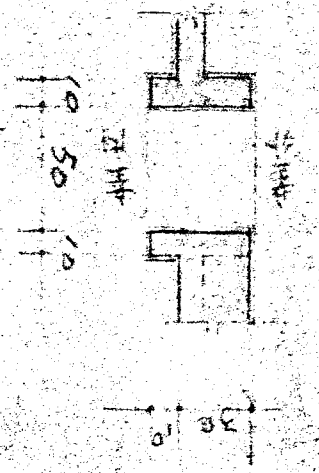
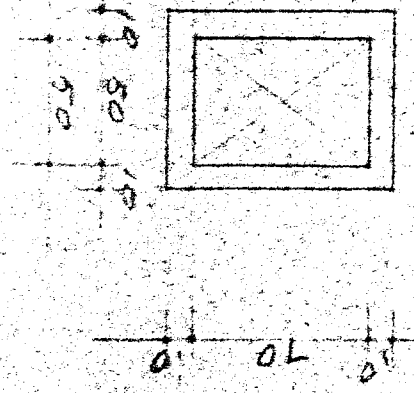
90

70

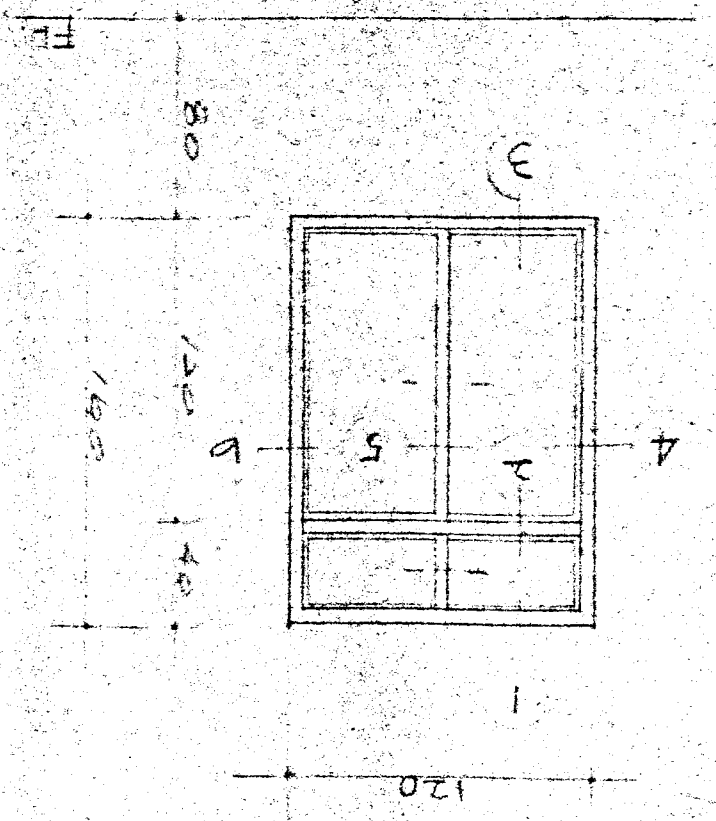
100

1. 全铝材
2. 断桥铝 CE-200F
或全铝
3. 玻璃 5mm 清
4. 窗上框 70-
120x30mm (H)

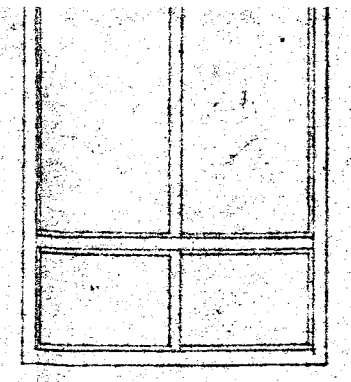
CFE



W1 雙動鋁橫拉窗 (120x160)



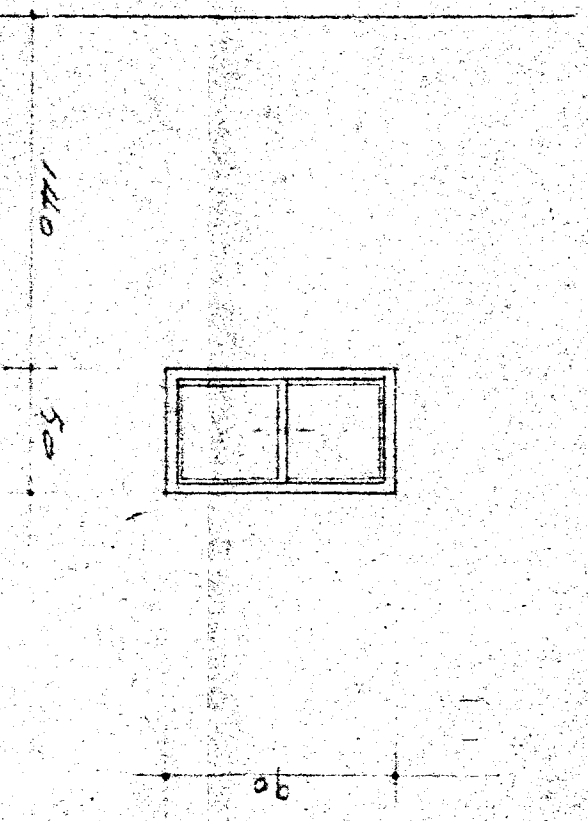
- 1 本屋鋁材
- 2 接中環 CK-70/MK
- 3 玻璃 5mm



100
140

- 1 本屋鋁材
- 2 接中環 CK-70/MK
- 3 玻璃 5mm

W2 雙動鋁橫拉窗 (90x50)

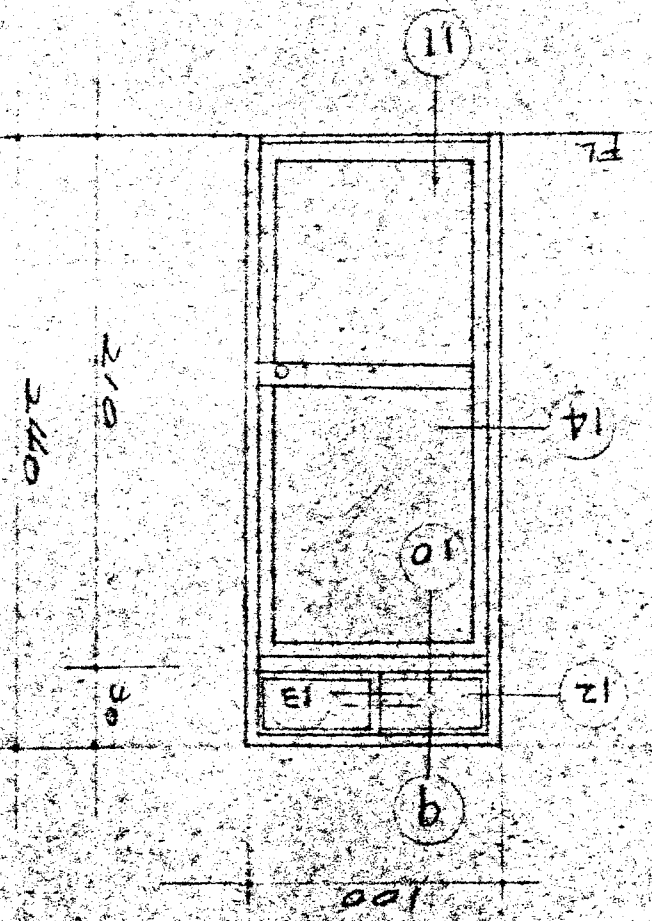


- 1 本屋鋁材
- 2 接中環 CK-70
- 3 玻璃 5mm

REVISION	DATE	DESCRIPTION	APPROVAL

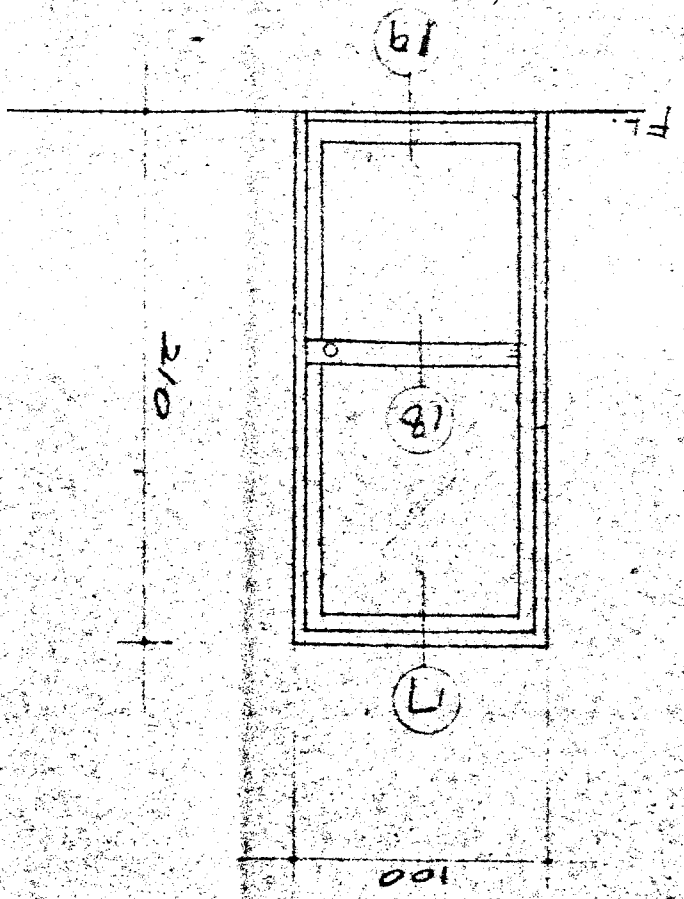
林同棧工程
T.Y. LIN, TAIW
STRUC
TAIPEI, TAIW

D2 鋁玻璃門 (100x210)



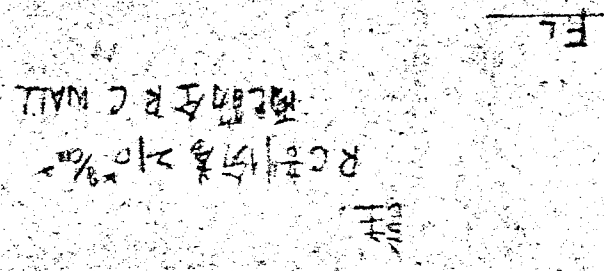
- 註
1. 本門鋁材
 2. 門中樑 CE-100 4/8
 3. 附金屬配件 把手
 4. 玻璃 5mm 壓花
 5. 門鎖 鑰匙鎖 中

D3 鋁玻璃門 (100x210)

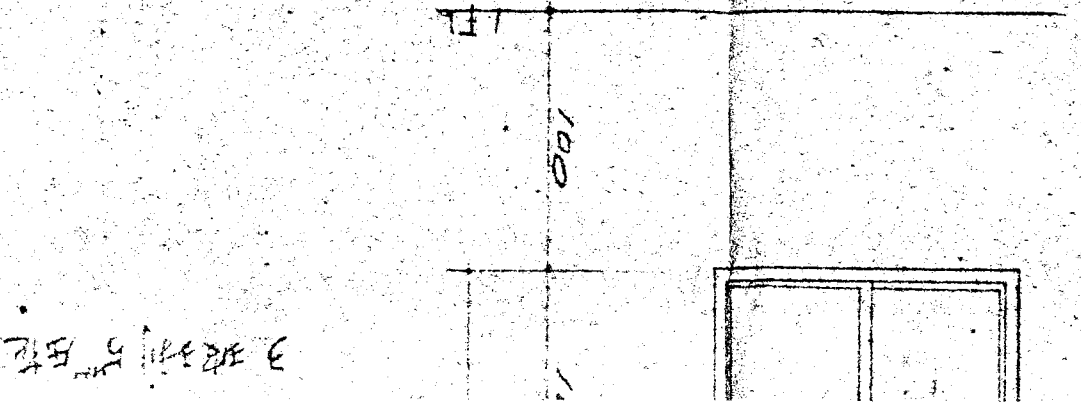


- 註
1. 本門鋁材
 2. 門中樑 CE-70 I
 3. 附金屬配件 把手
 4. 門鎖 鑰匙鎖 中
 5. 玻璃 5mm 壓花

W4 空氣孔 (70x50)



W5 雙對鋁橫拉窗 (120x110)



DRAWN BY: 溫國松
 DESIGNED BY: 李
 CHECKED BY: 李
 APPROVED BY:

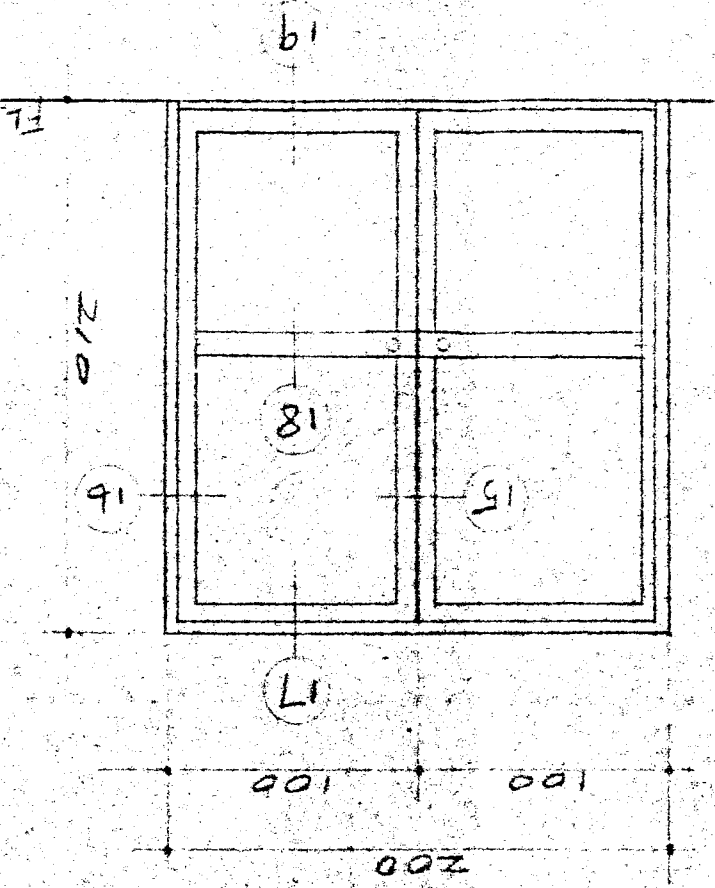
行政院國家科學委員會地熱發電小組
 先導型地熱發電廠新建工程

DRAWING NO. A-8
 JOB NO.
 DATE: 1981.02.01

門窗詳圖

D4 鋁玻璃門 (200x210)

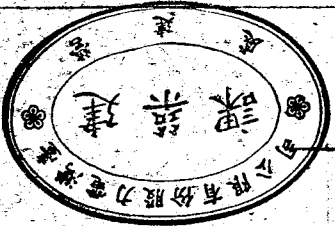
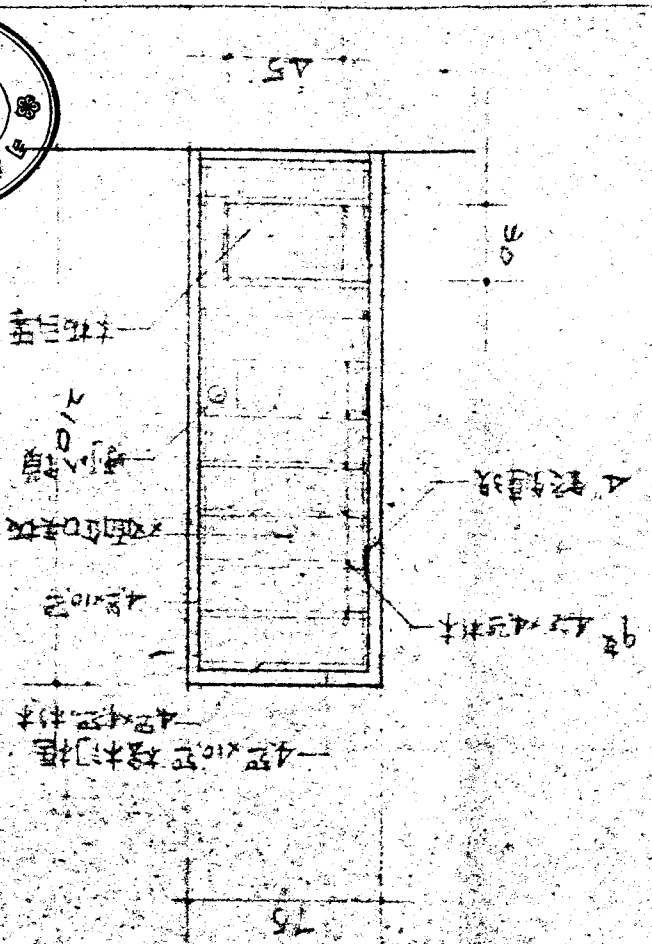
- 1 不銹鋼材
- 2 持中華 CE-70 I
- 或全級品
- 3 附金屬零件 把手
- 門鎖 鎖鍵 H
- 4 玻璃 5mm 壓花
- 5 上扣 12"x30" 檯條



5mm 檯條
 5mm 壓花
 H
 把手
 CE-70 I

D5 企口夾板門 (75x210)

- 1 企口夾板門框
- 2 雙面企口夾板門
- 3 附 8mm 鎖匙
- 4 附 8mm 鎖匙
- 5 附 8mm 鎖匙



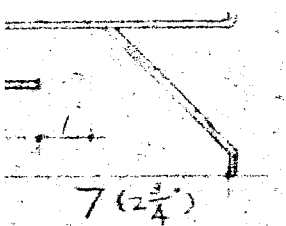
W7 固定鋁窗 (240x120)

W6 固定鋁窗 (60x60)

3 玻璃 5mm 清

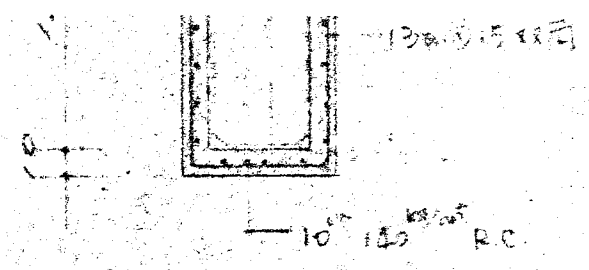
3 玻璃 5mm 清

3 玻璃 5mm 清

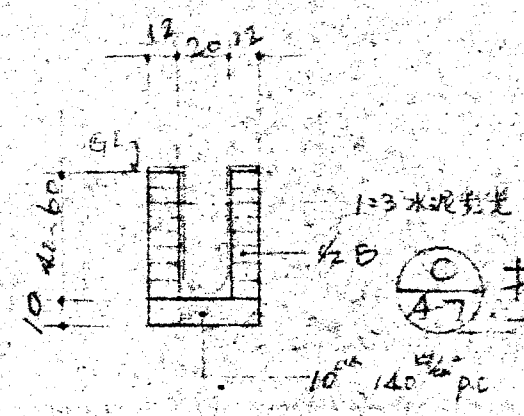


7 (2 $\frac{3}{4}$)

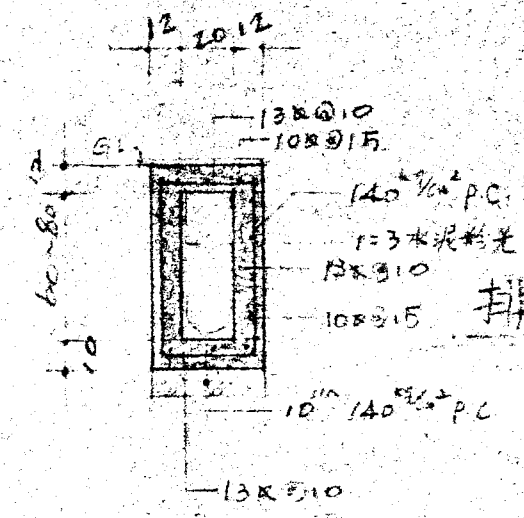
剖面 S=1/2



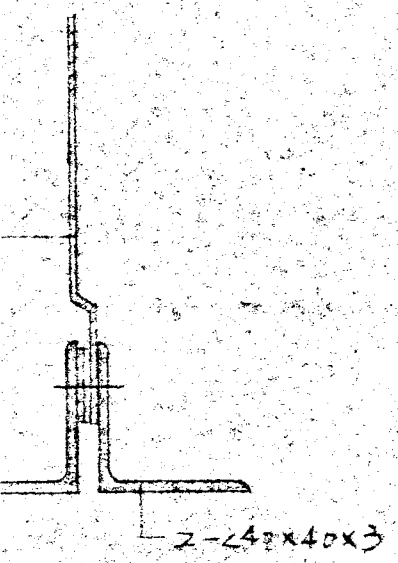
(B) 集水陰井詳圖 S=1/30



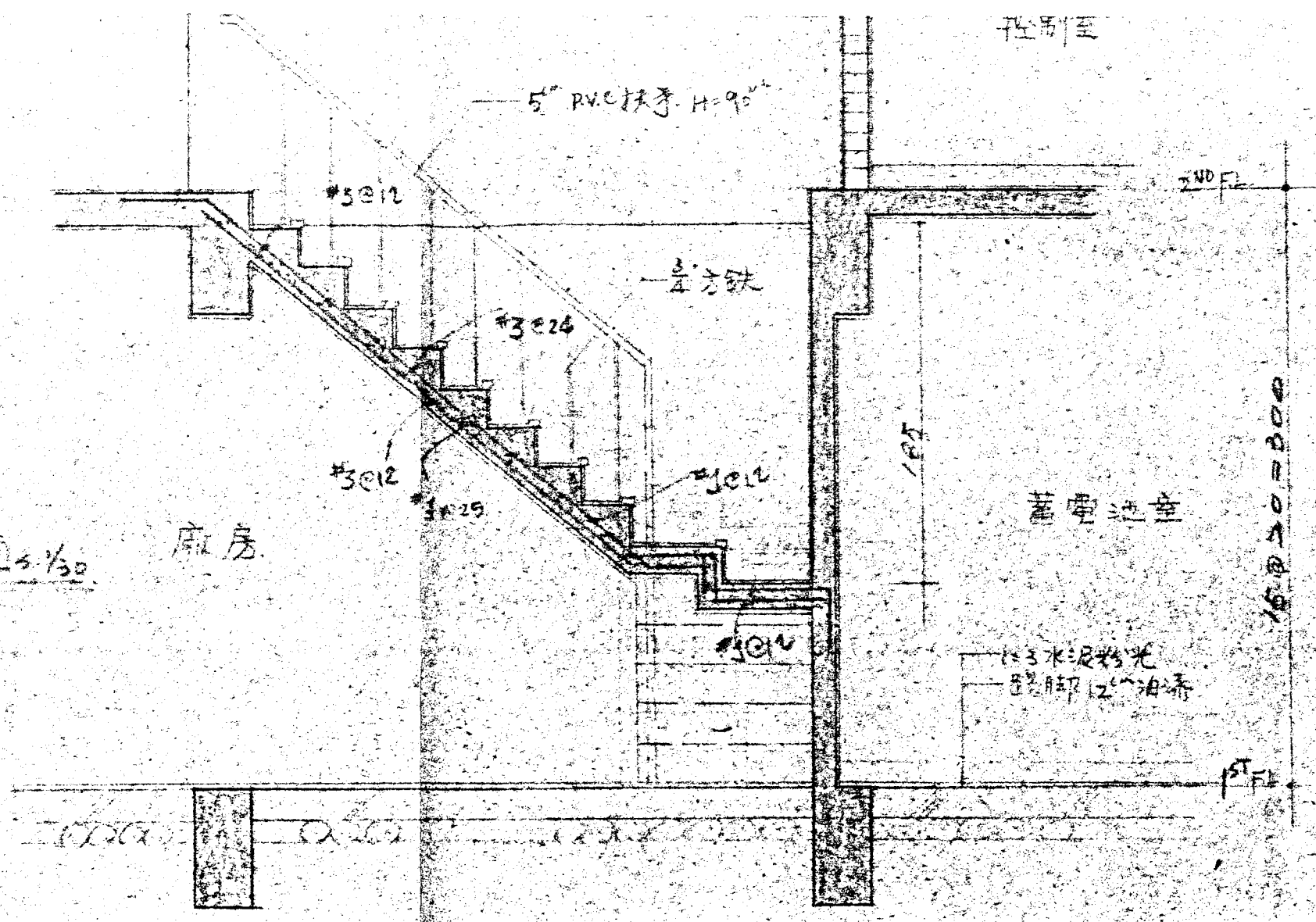
(C) 排水明溝剖面 S=1/30



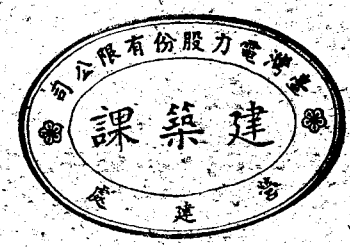
(D) 排水暗溝剖面 S=1/30



剖面 S=1/2



(E) 剖面詳圖 S=1/30



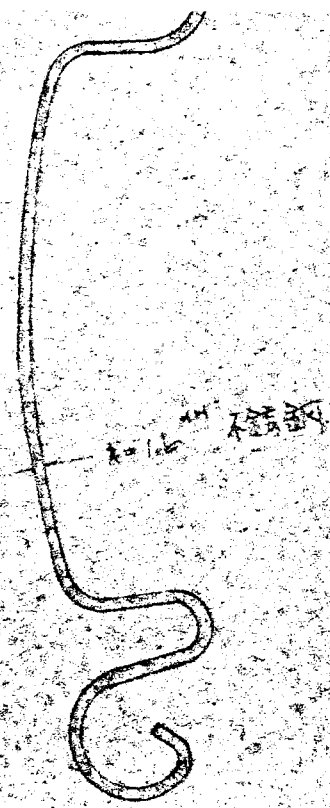
同棧工程顧問股份有限公司
 T. Y. LIN, TAIWAN, INCORPORATED
 STRUCTURAL ENGINEERS
 TAIPEI, TAIWAN, REPUBLIC OF CHINA

DRAWN BY: 溫國樑
 DESIGNED BY: 李
 CHECKED BY: 李
 APPROVED BY:

行政院國家科學委員會地熱發電小組
 先導型地熱發電廠新建工程

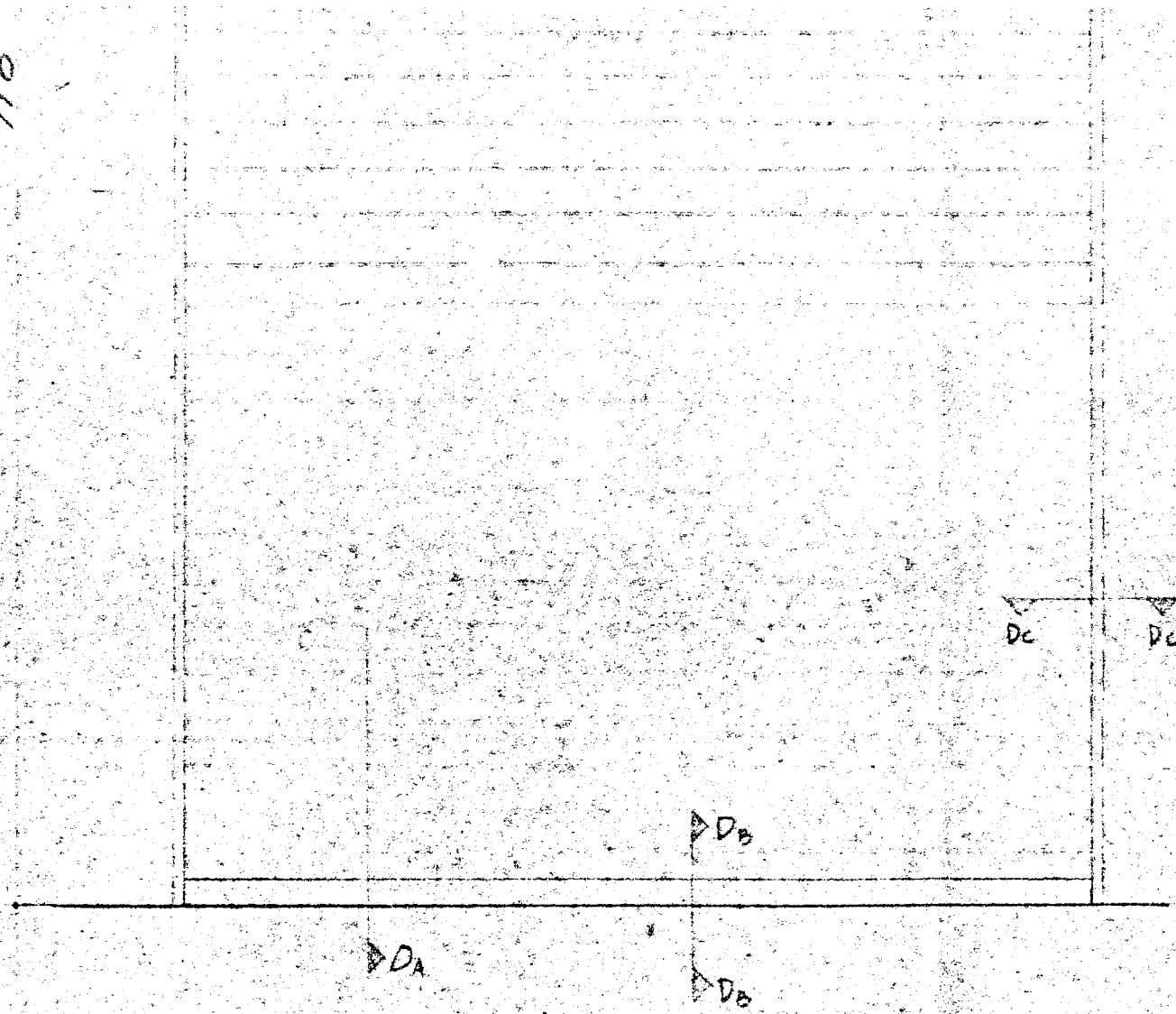
不銹鋼捲門陰井水溝坡道 E 剖面詳圖 粉刷表

DRAWING NO: A-7
 JOB NO:
 DATE: 8.24



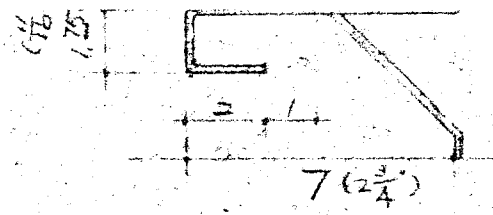
不銹鋼板門片詳圖
Full Scale

710

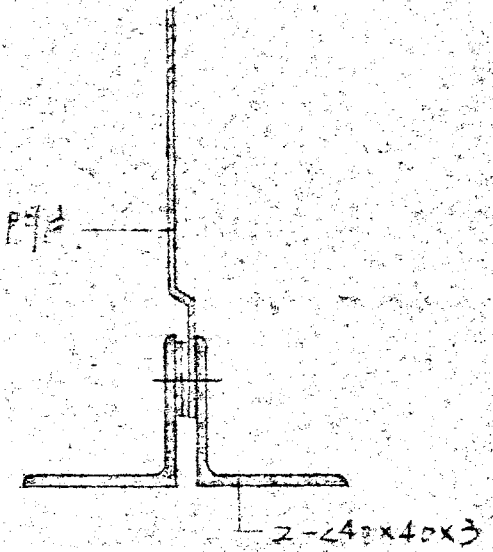


DA-DA 剖面圖 $s=1/30$

D1 不銹鋼捲門 (400 x 710) $s=1/30$



Dc-Dc 軌槽剖面 $s=1/2$



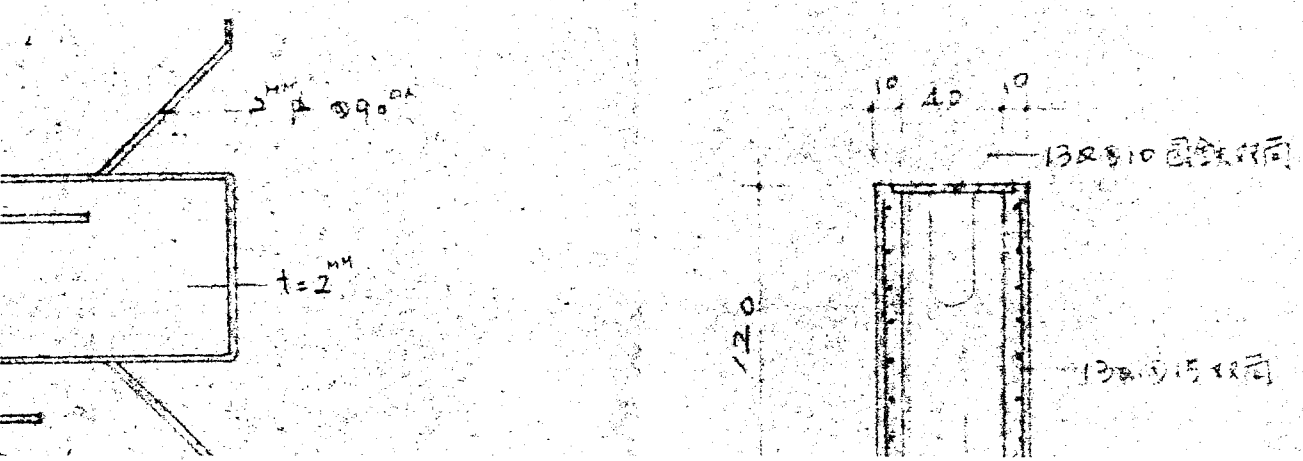
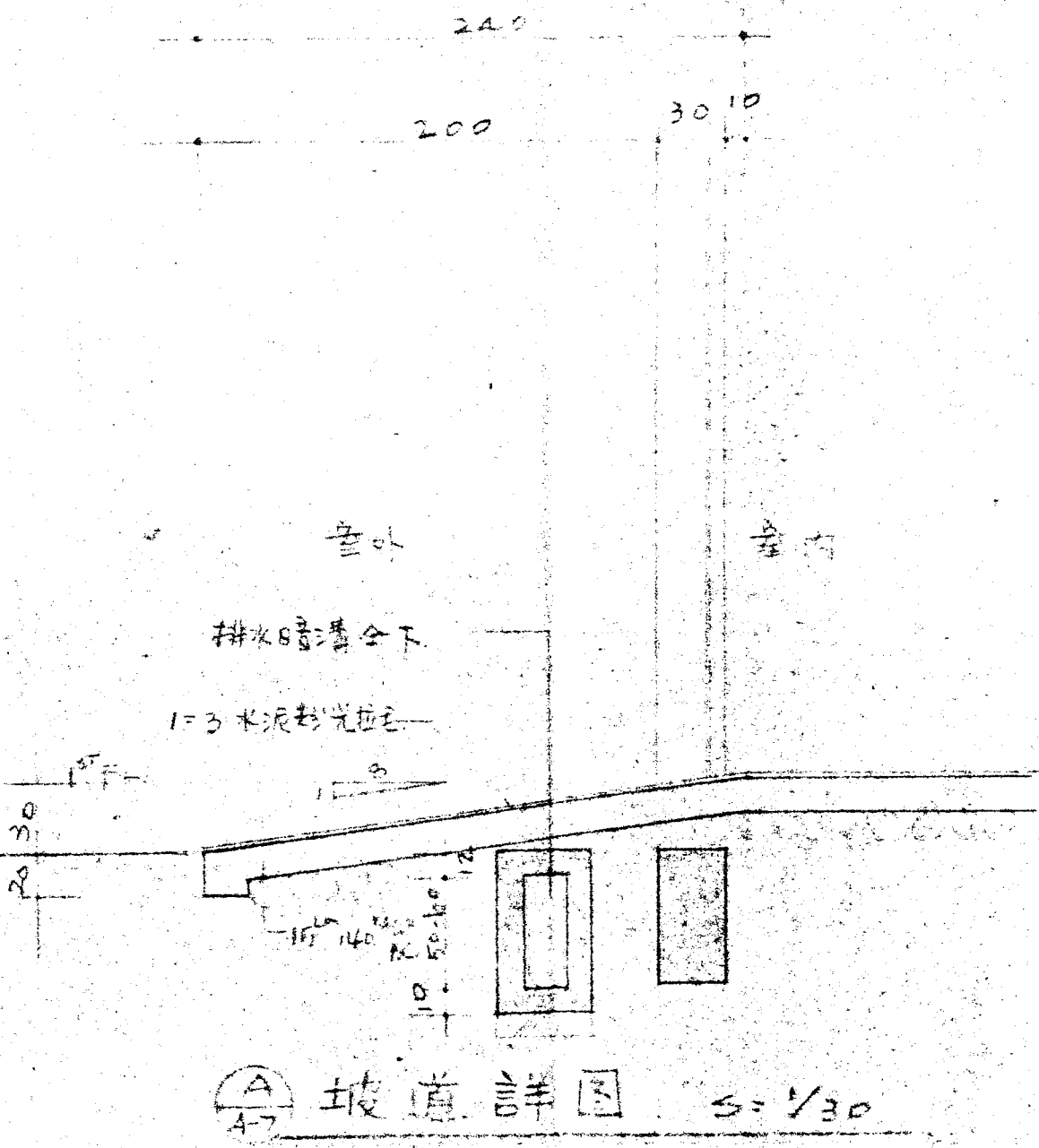
D0-D0 剖面 $s=1/2$

REVISION	DATE	DESCRIPTION	APPROVAL

林同棧工程
T. Y. LIN, TAI
STRUC
TAIPEI, TAI

粉 刷 表

樓 別	項 目	地 坪	踢 腳	天 花	牆 面
	材 料 名	1:3 水泥粉光	鋪 紅 磚	1:3 水泥粉光	貼 磁 磚
壹 樓	廠 房				
	工 房				
	倉 庫				
	辦 公 室				
	浴 室				
貳 樓	走 道				
	工 房				
	倉 庫				
參 樓	廠 房				
	廠 房				



控制室

60 12

15

400

15

5" 鋼孔棒

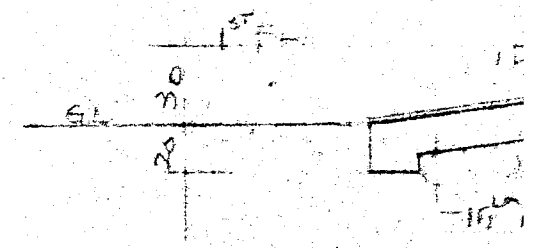
Box 6" 厚

DA

80

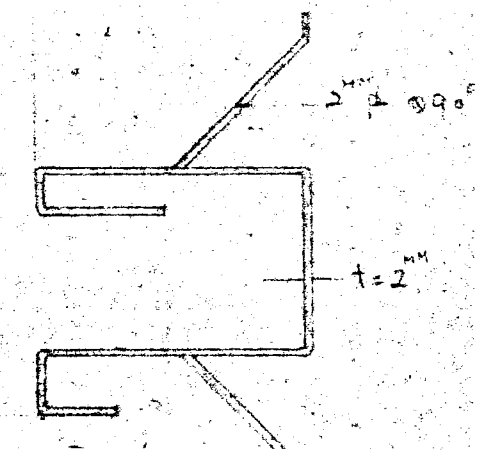
排水暗溝

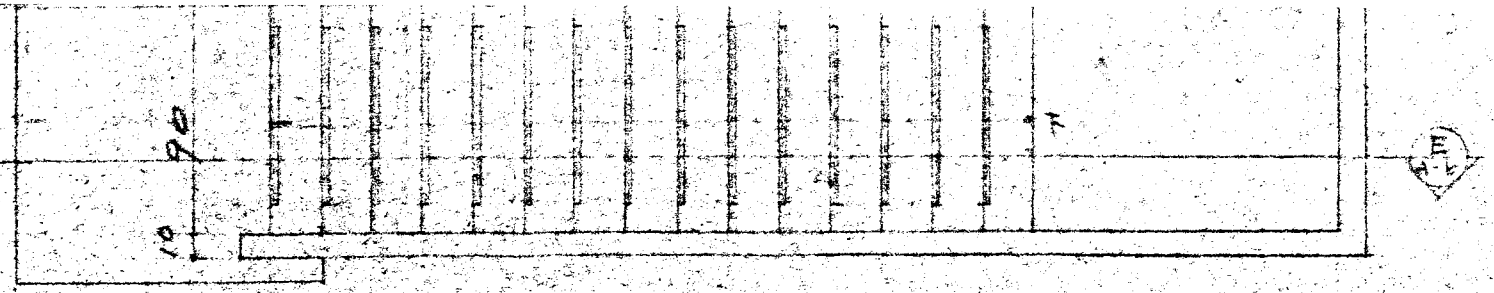
1=3 水泥粉土



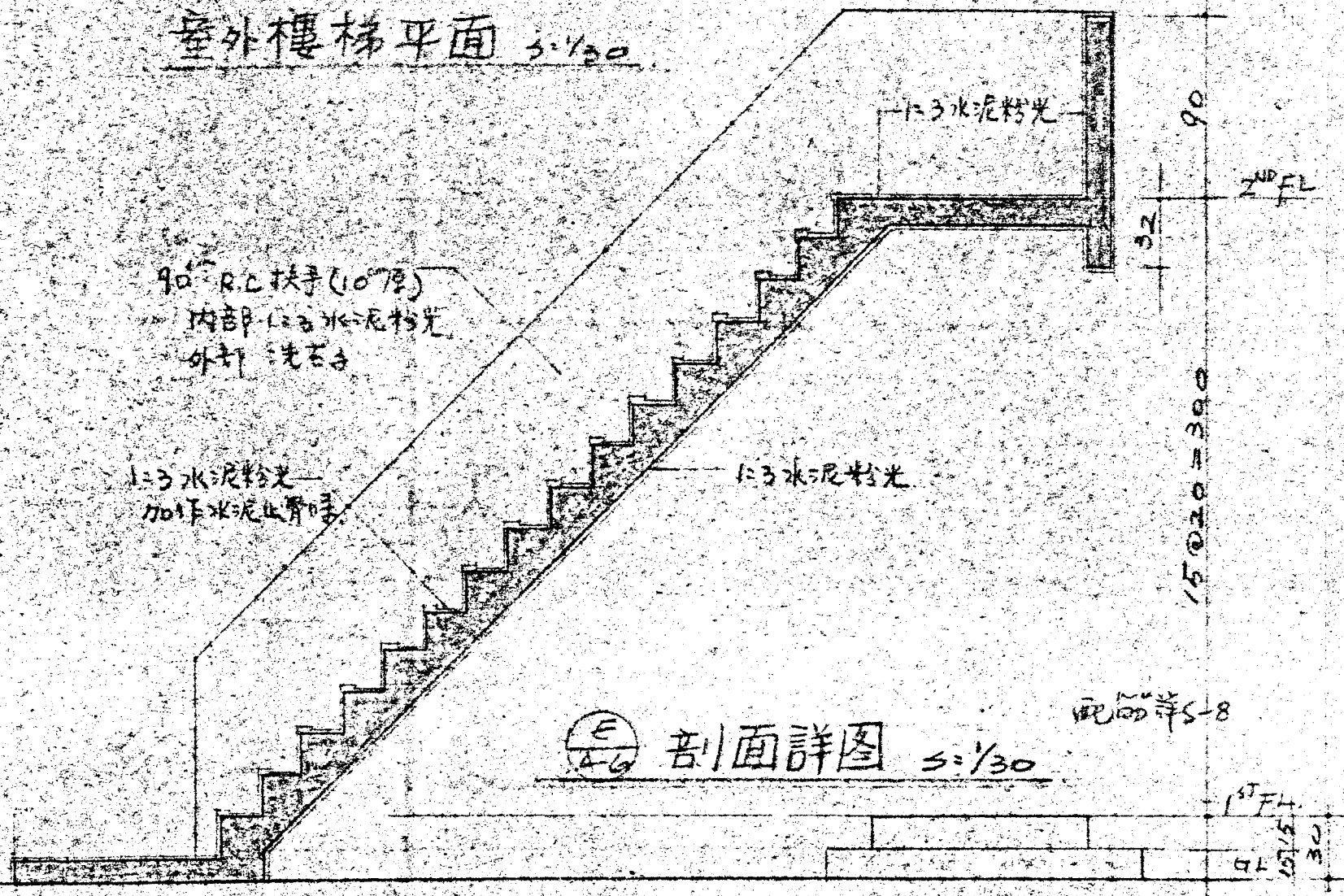
A
4-7

(1/8) (1) (1/4)
1.25 5.50 1.25

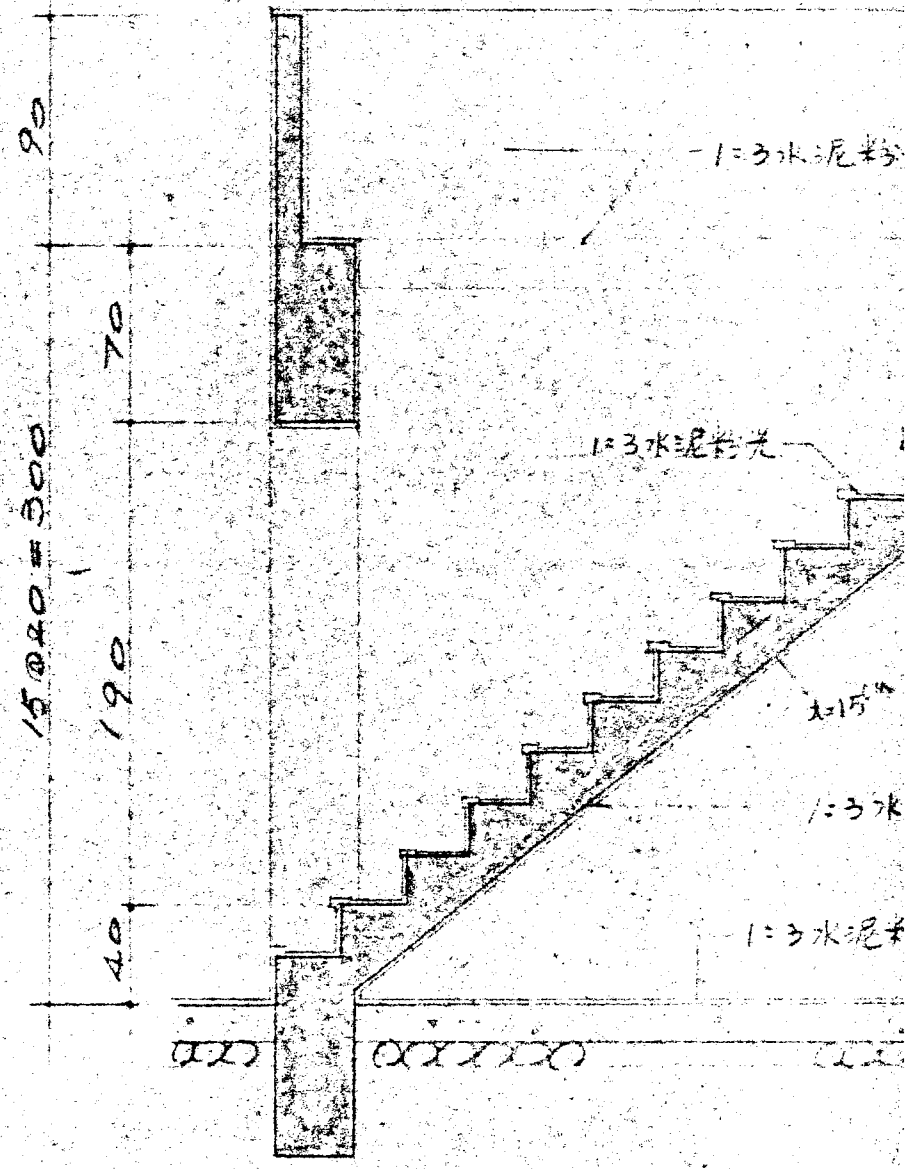




室外樓梯平面 1/30



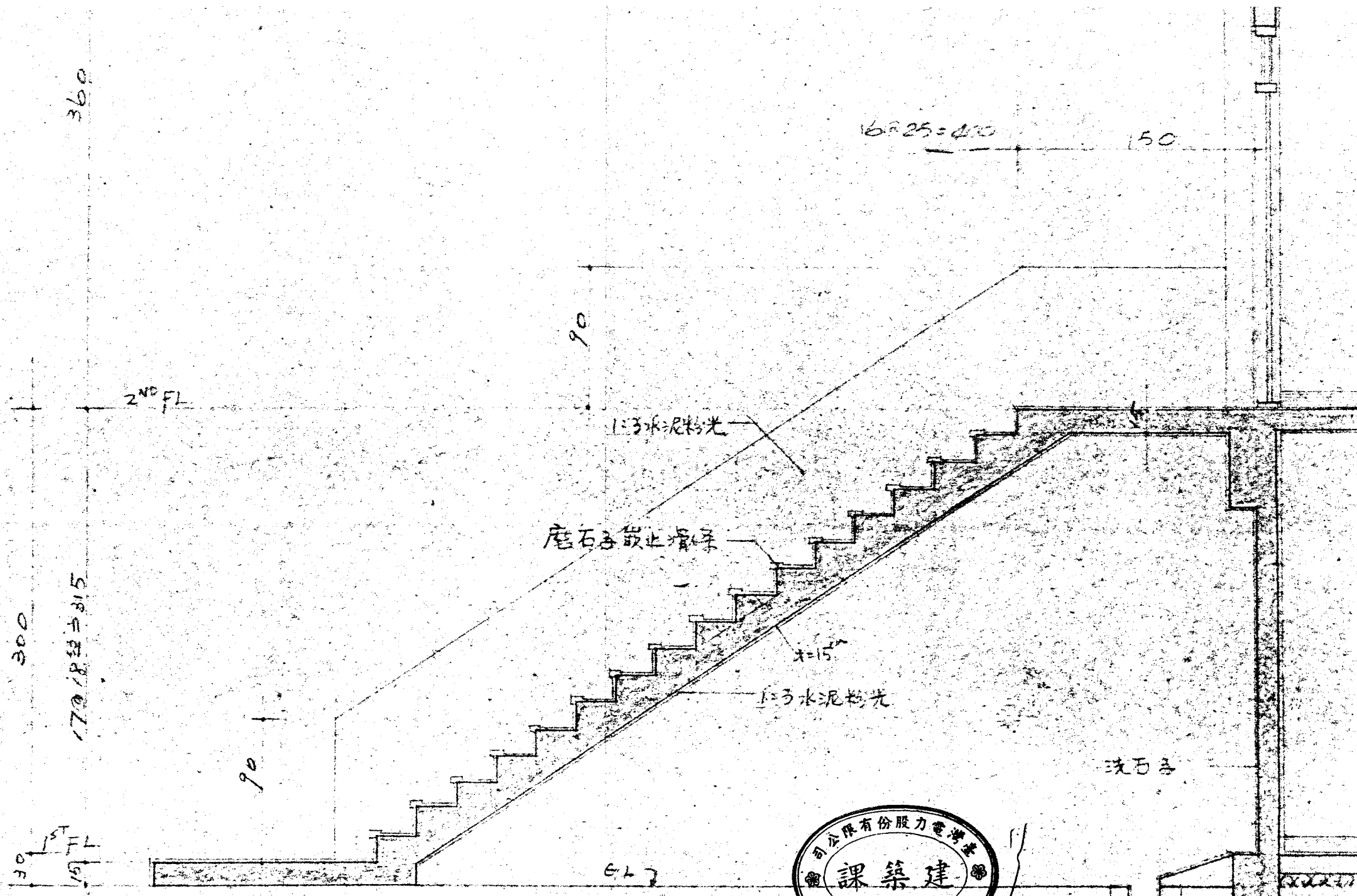
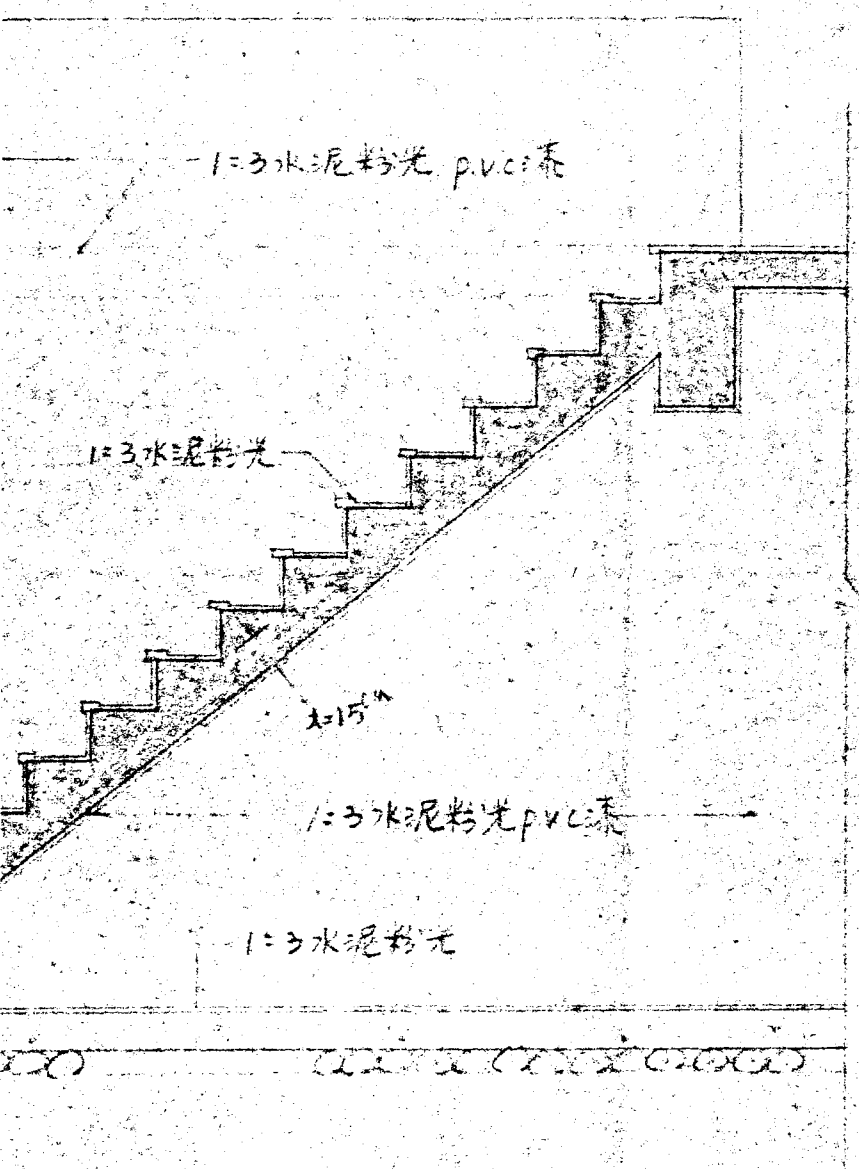
剖面詳圖 1/30



剖面

REVISION	DATE	DESCRIPTION	APPROVAL

林同棧工程
T. Y. LIN, TAI
STRUC
TAIPEI, TAI



F/A-6 剖面詳圖 3:1/30 配筋詳S-8

G/A-6 剖面詳圖 3:1/30 配筋詳S-8

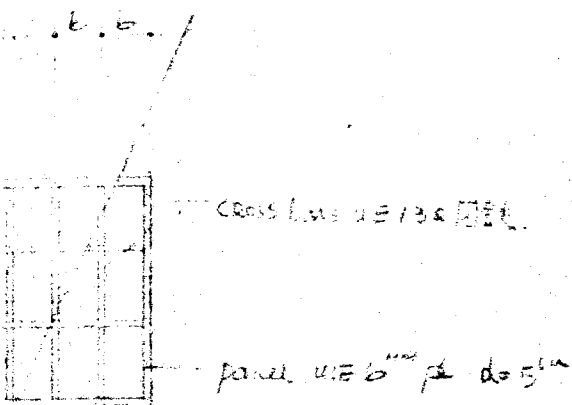


同棧工程顧問股份有限公司
T. Y. LIN, TAIWAN, INCORPORATED
STRUCTURAL ENGINEERS
TAIPEI, TAIWAN, REPUBLIC OF CHINA

DRAWN BY: 溫國城
DESIGNED BY: 李
CHECKED BY: 李
APPROVED BY:

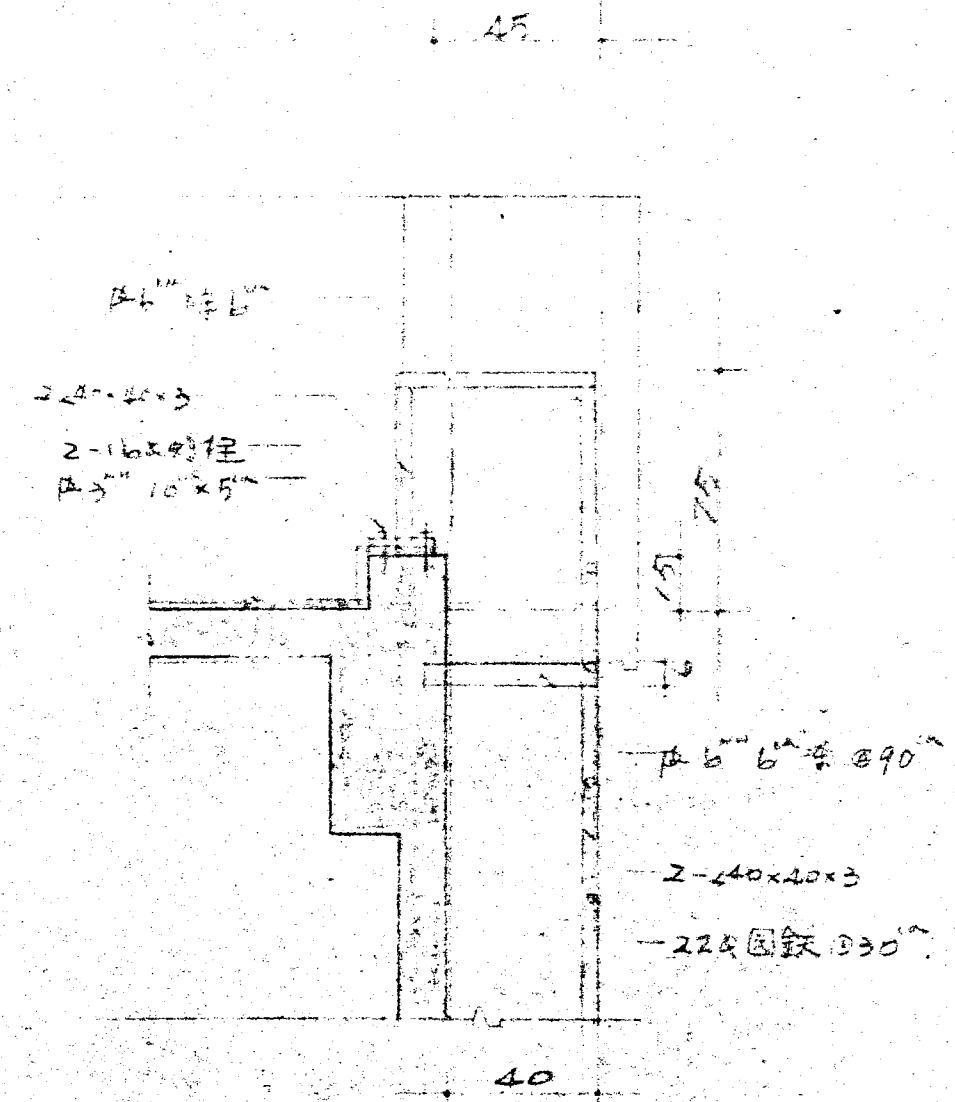
行政院國家科學委員會地熱發電小組
先導型地熱發電廠新建工程
欄杆蓋板樓梯爬梯三詳圖

DRAWING NO. A-6
JOB NO.
DATE 82.1.11

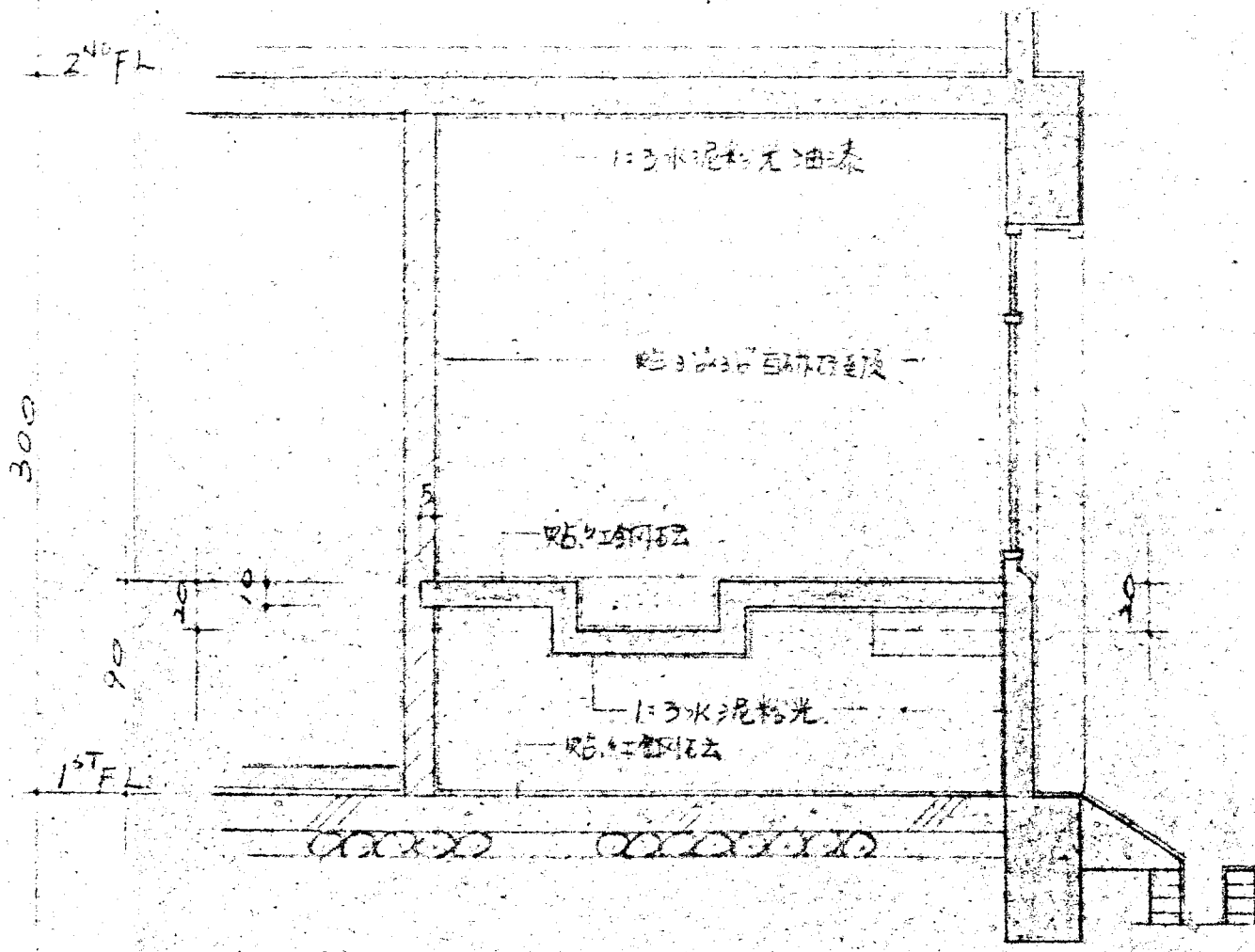


5/10
 5
 5/10

5/10

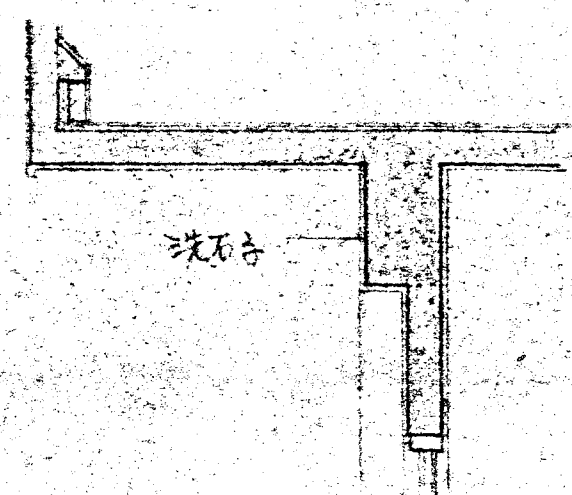


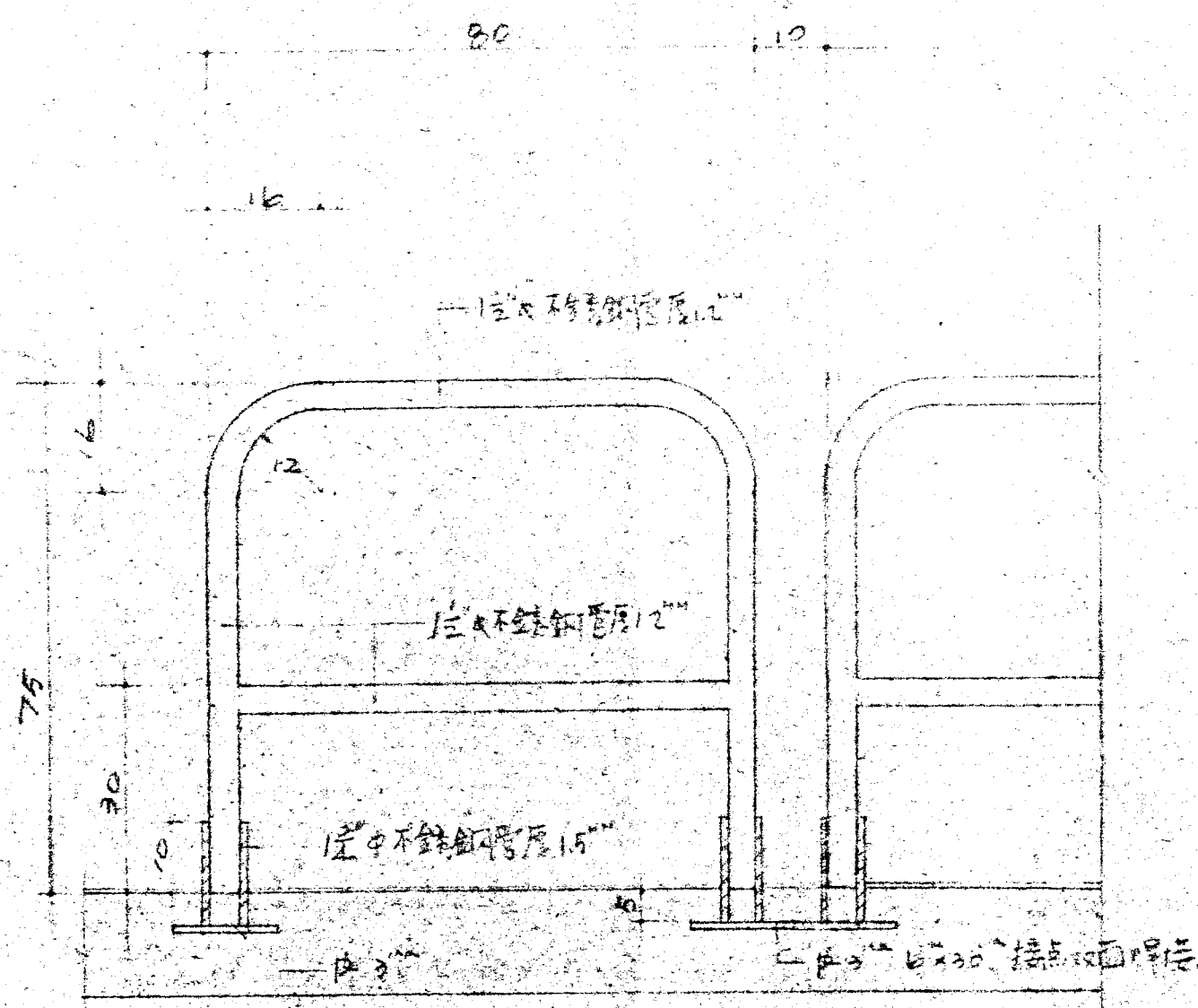
屋頂爬梯詳圖 5/20



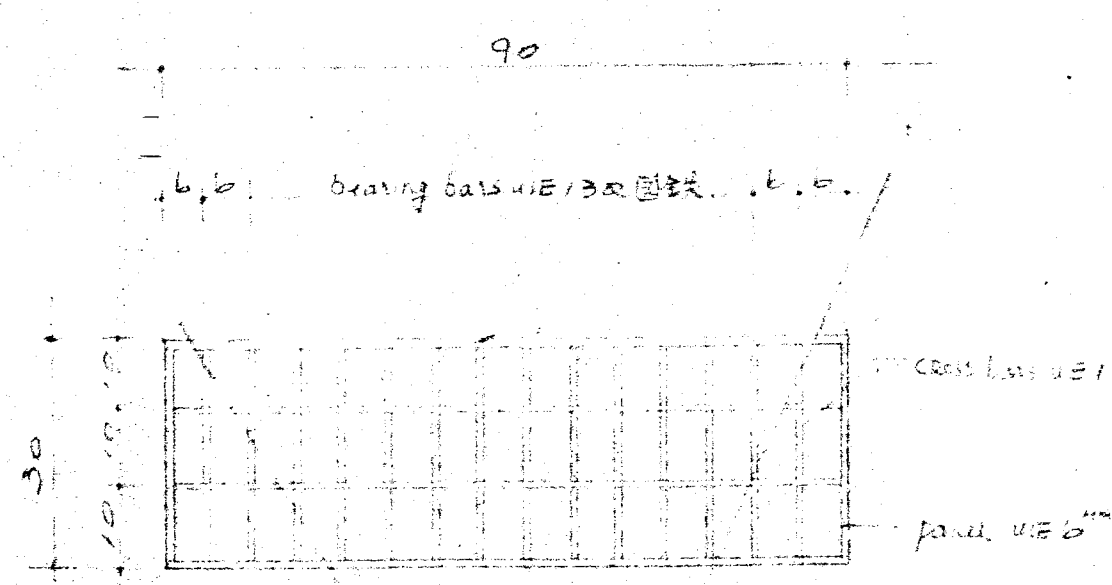
爐台剖面 5/30

3TH FL

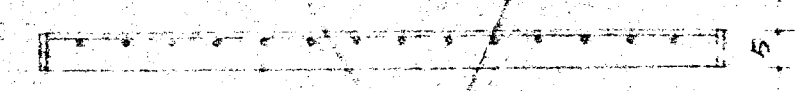




(A) 活動欄杆詳圖 5:1/10



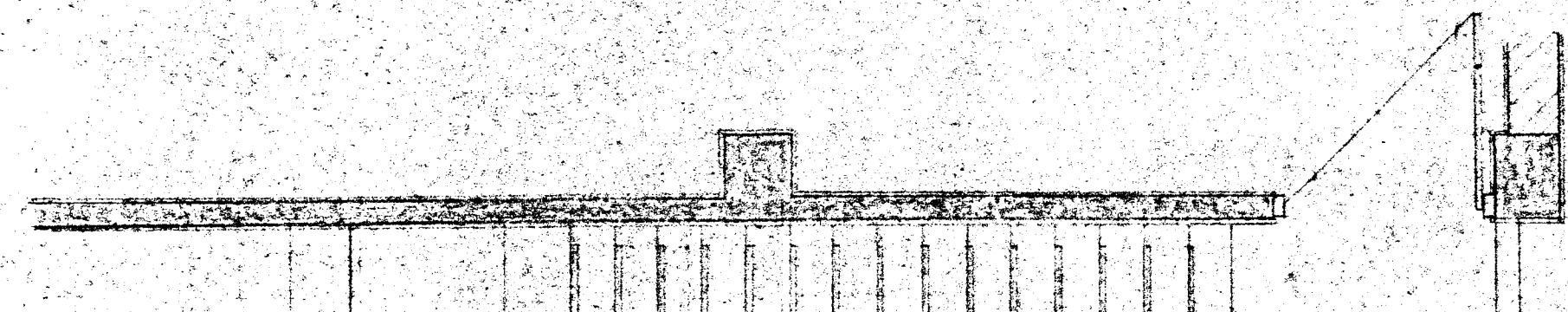
平面大樣 5:1/10



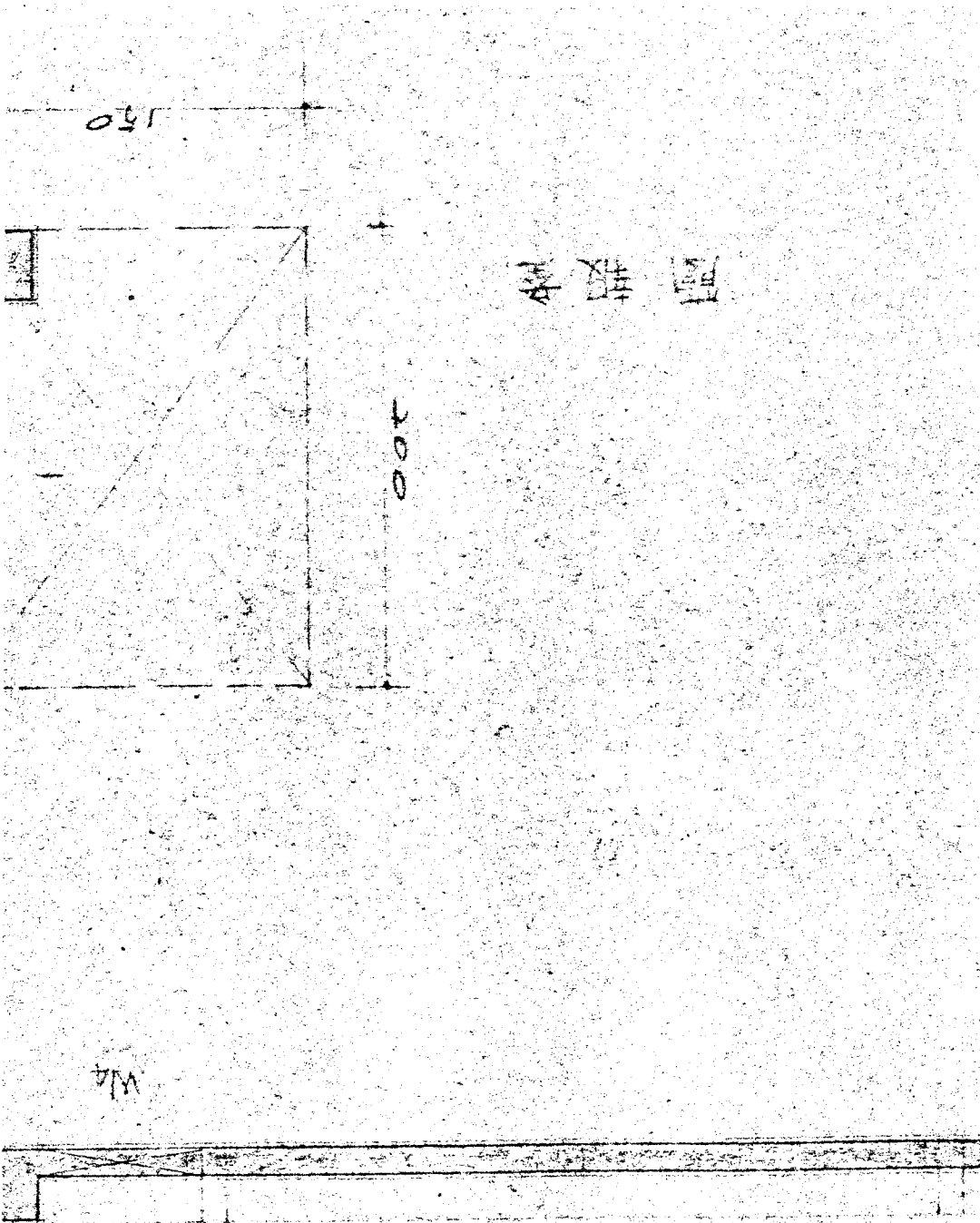
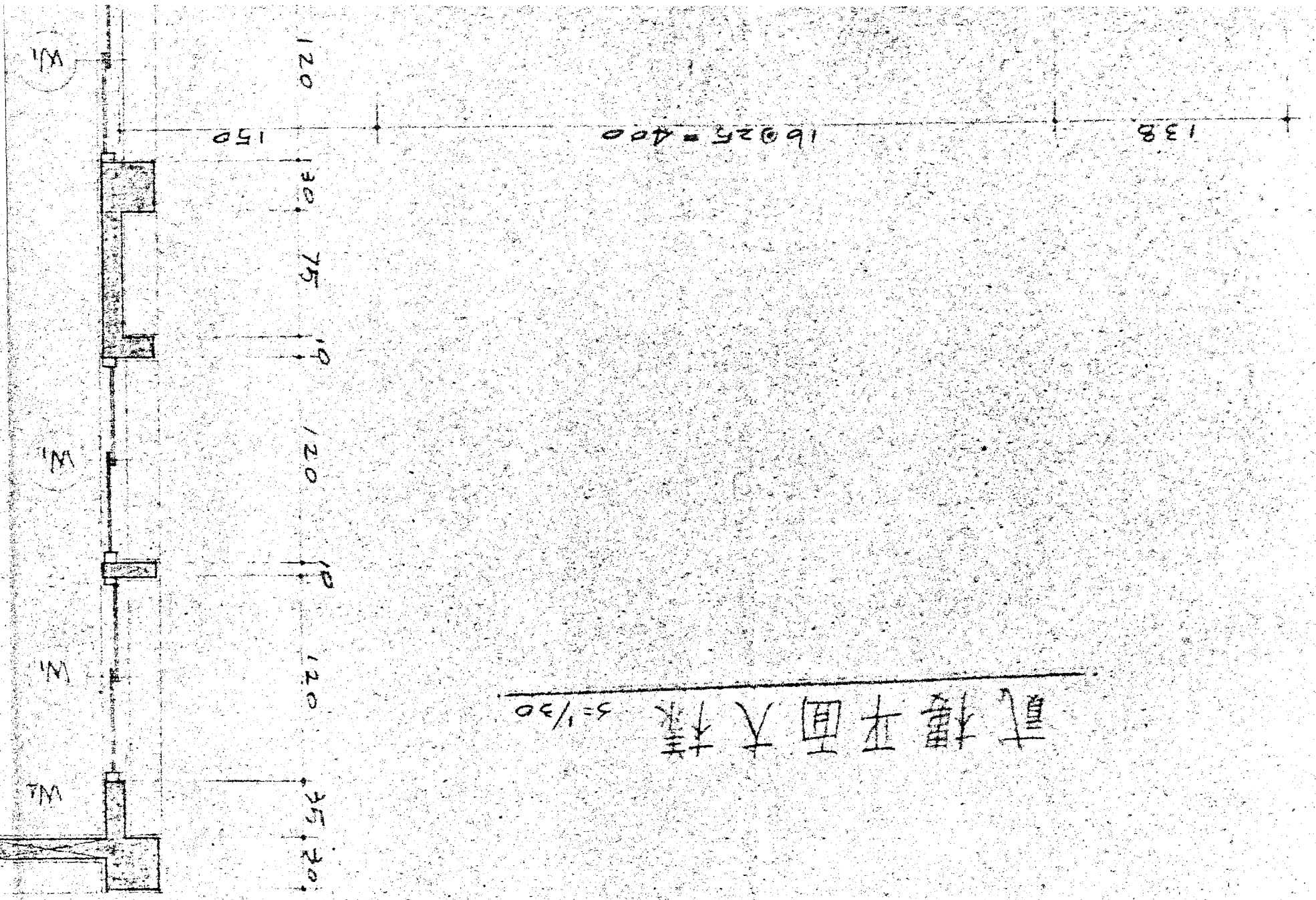
剖面大樣 5:1/10

註: 接點用點焊(雙面)

(B) 活動蓋板詳圖 5:1/10

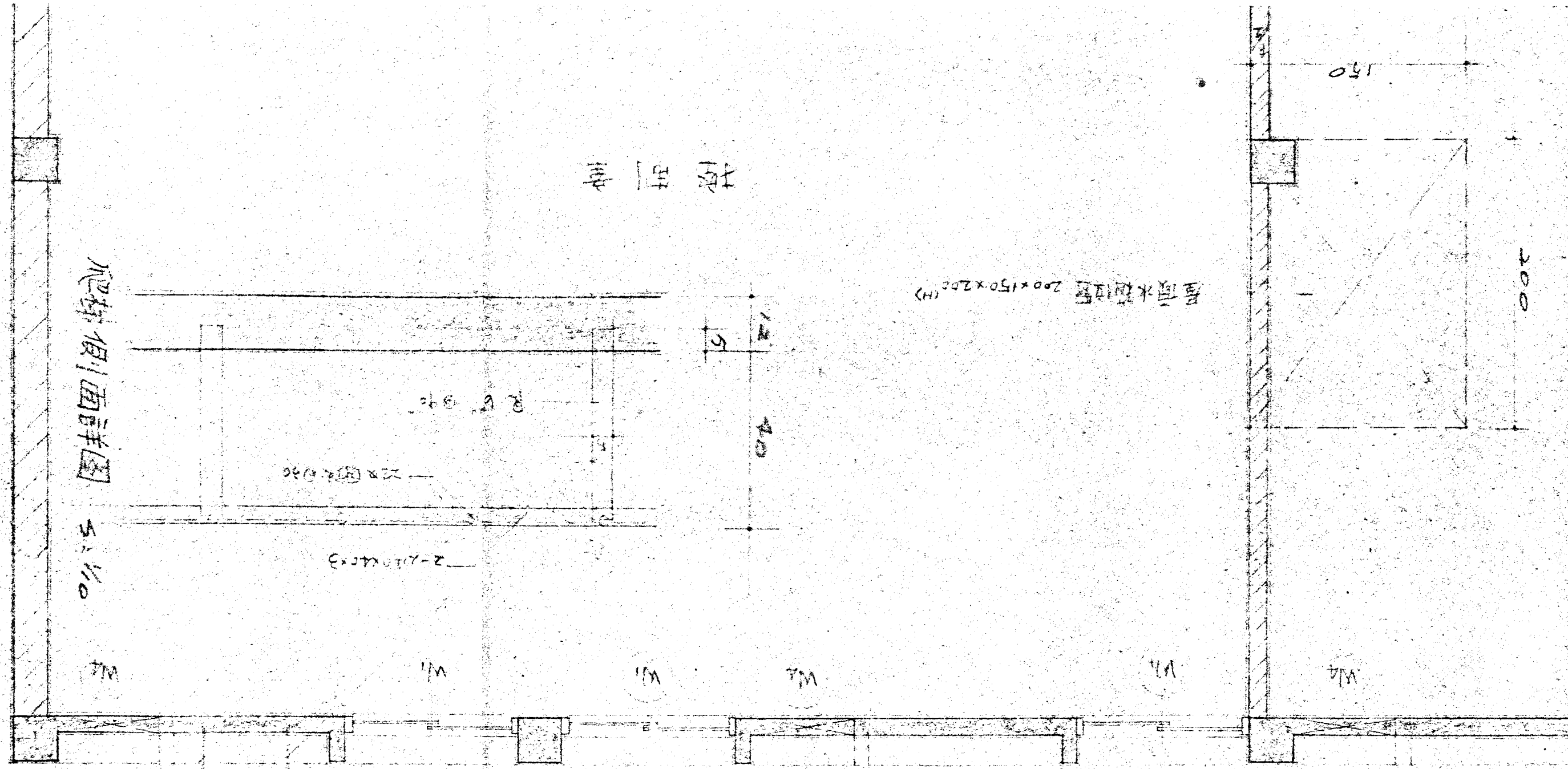


貳樓平面大樣 3/30



圖樣

470
500



樓面

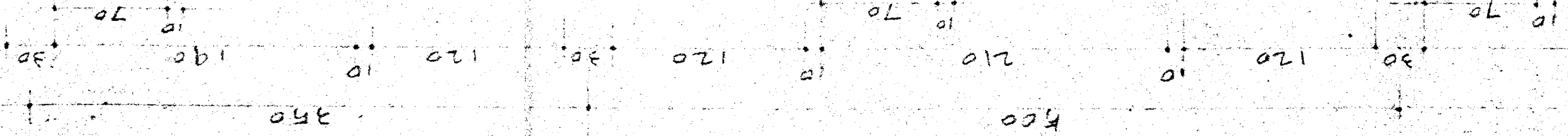
爬梯側面詳圖

屋頂水櫃位置 $200 \times 150 \times 200$ (H)

$22 \times \text{III} \times 190$

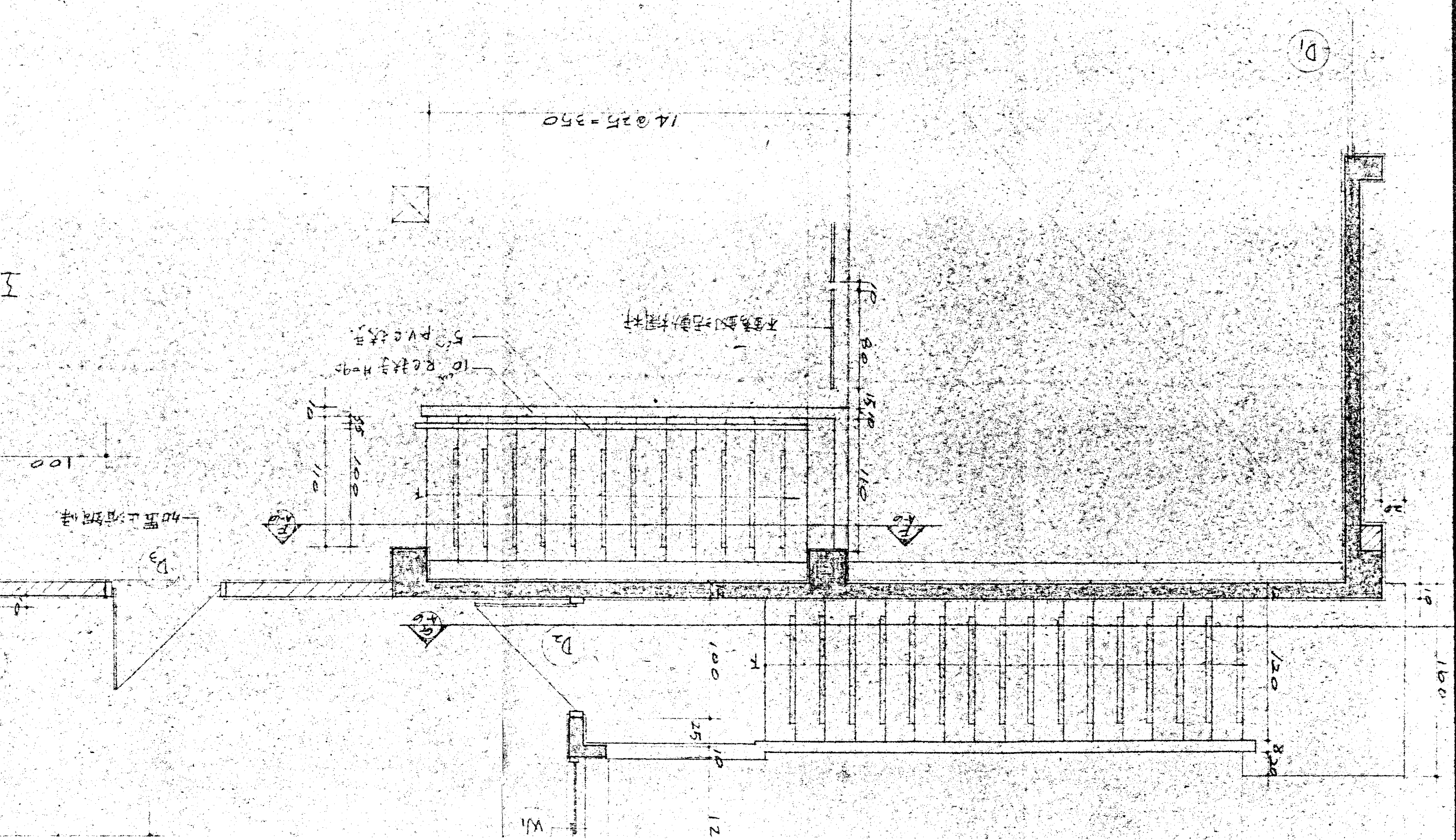
$2 \times \text{II} \times 100$

$22 \times \text{III} \times 190$
 $240 \times 100 = \text{II}$
 $\phi 6$ 间距 50 间距 50



REVISION	DATE	DESCRIPTION	APPROVAL

林同棧工程顧問
T.Y. LIN, TAIWAN
STRUCTURAL
TAIPEI, TAIWAN



3

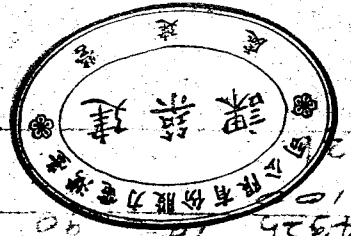
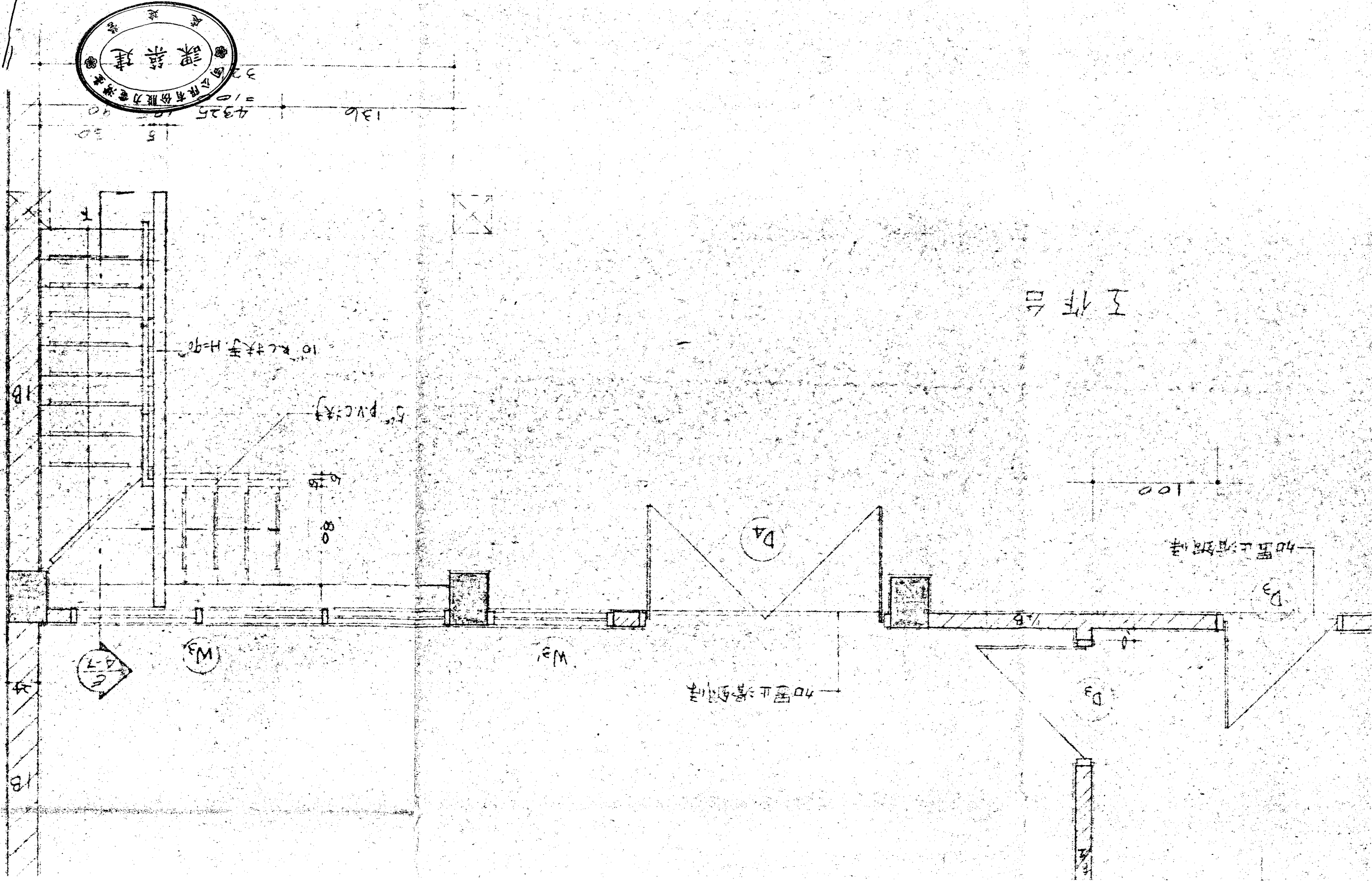
林同棧工程顧問股份有限公司
T. Y. LIN, TAIWAN, INCORPORATED
STRUCTURAL ENGINEERS
TAIPEI, TAIWAN, REPUBLIC OF CHINA

DRAWN BY: 呂國輝
DESIGNED BY: 李
CHECKED BY: 李
APPROVED BY:

行政院國家科學委員會地熱發電小組
先導型地熱發電廠新建工程

貳樓平面詳圖

DRAWING NO. A-5
JOB NO.
DATE: 11 27



290