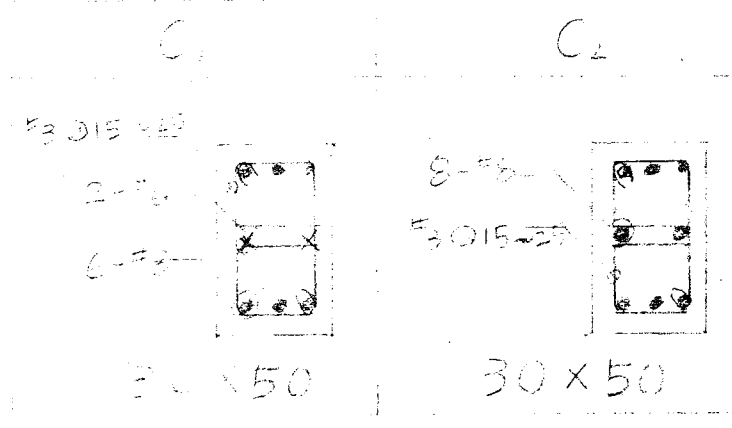


空冷塔基詳圖



次數	日期	修改內容	修改	校核	批准

蘭陽發電廠

清熱舍廢修理工程

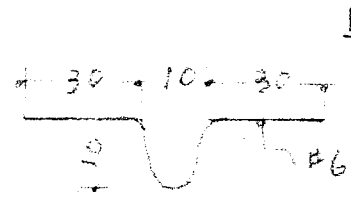


台 灣 電 力 公 司

設計 王世英
製圖 杜英水
校核

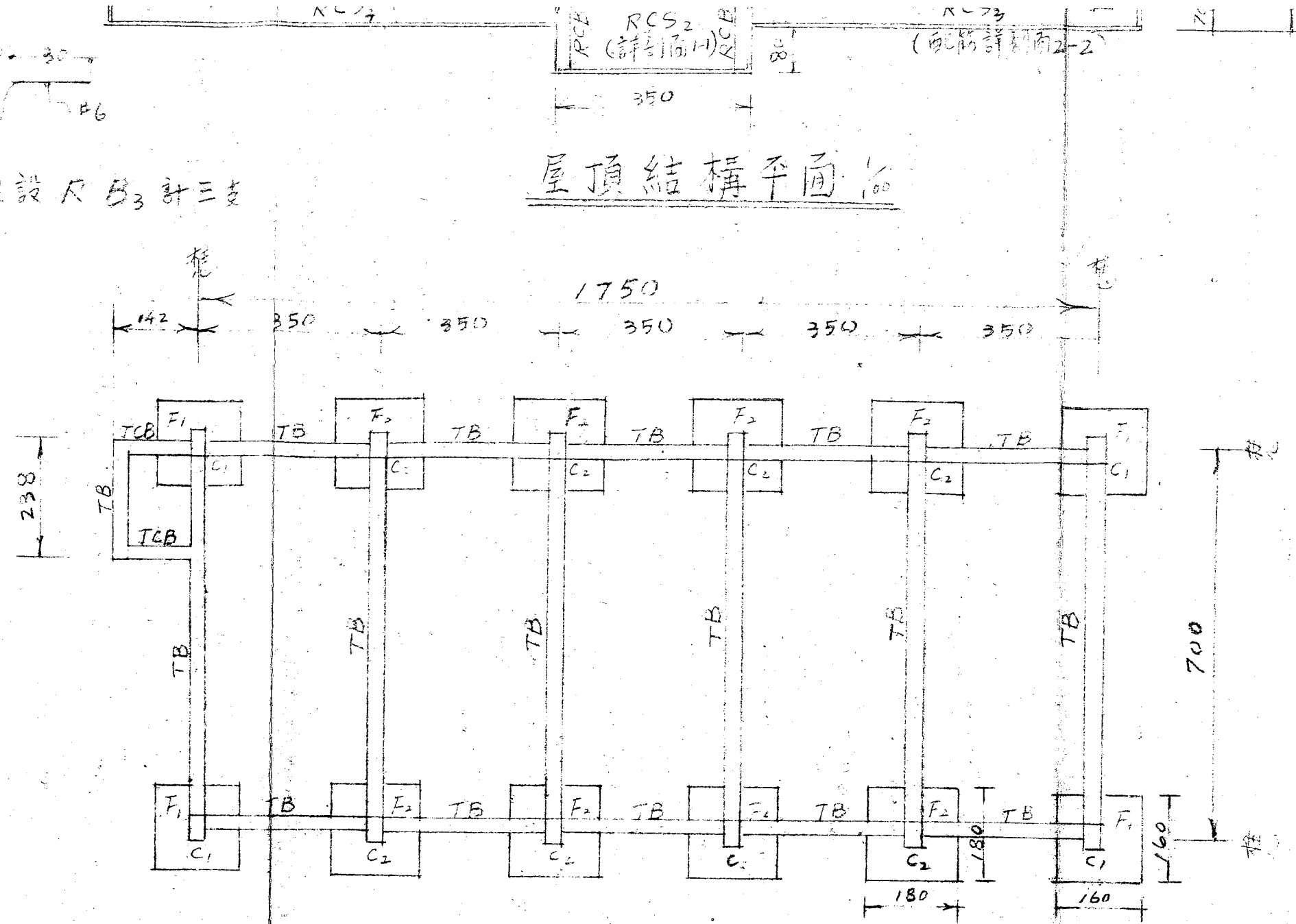
審核 廖啟瑞
審定 孫卓廣
批准

比尺 1/40 結構粉飾表 2/2

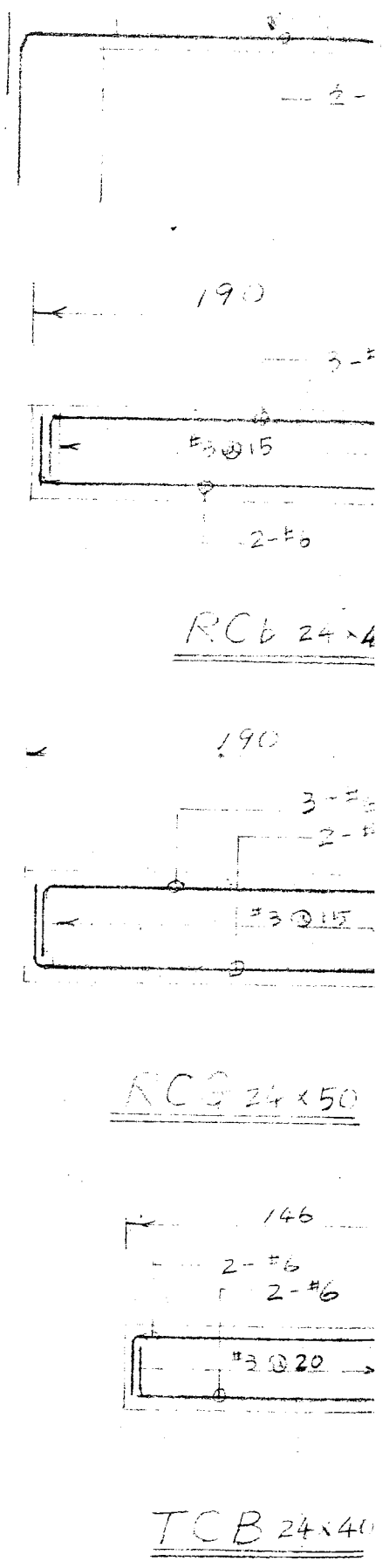


掛鉤埋設尺B₃計三支

屋頂結構平面 1/100



一樓結構平面 1/100



H

I

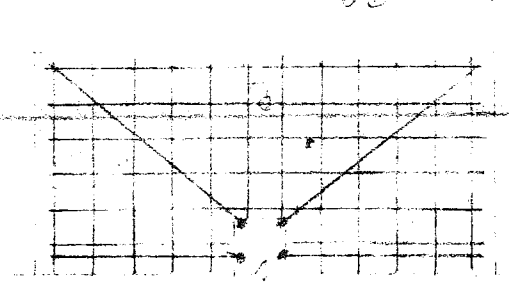
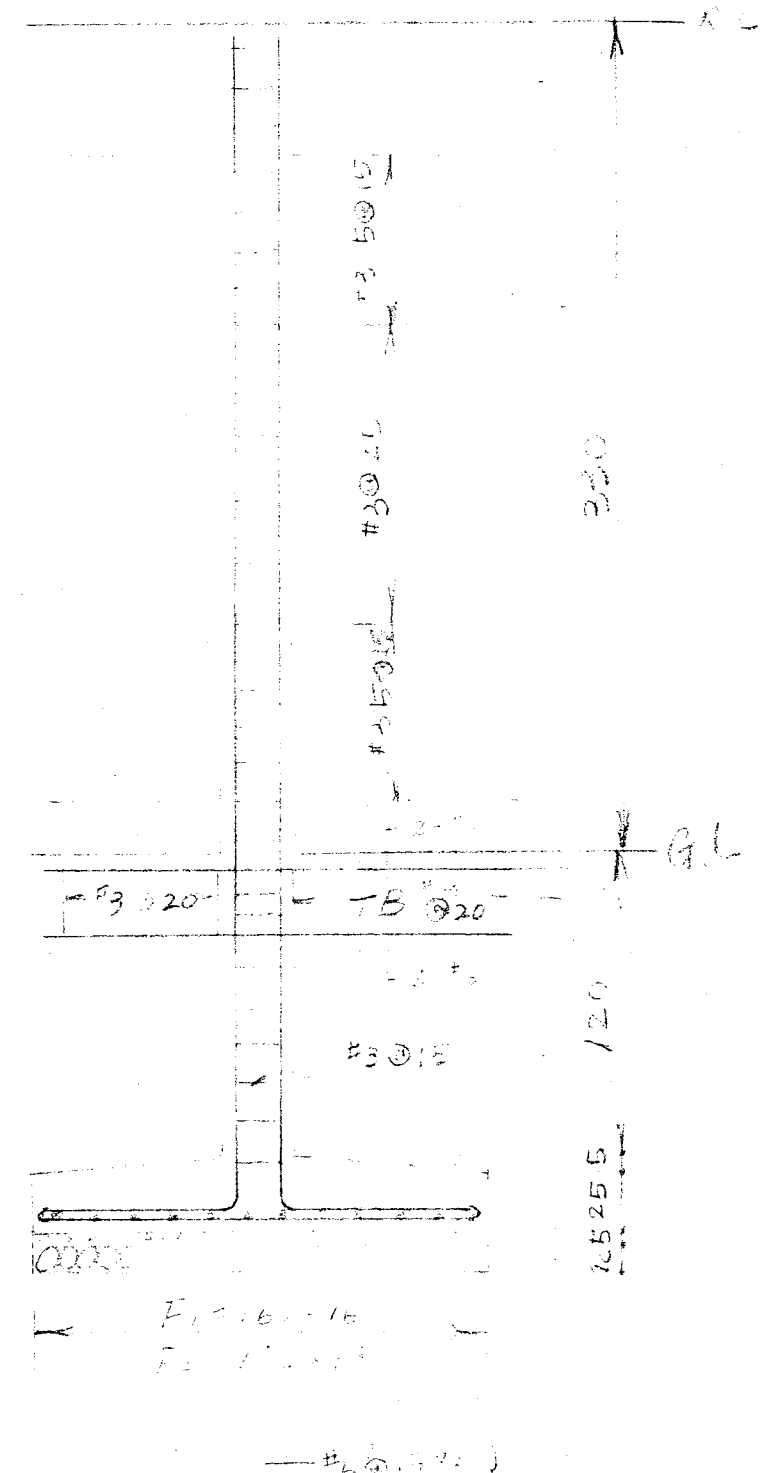
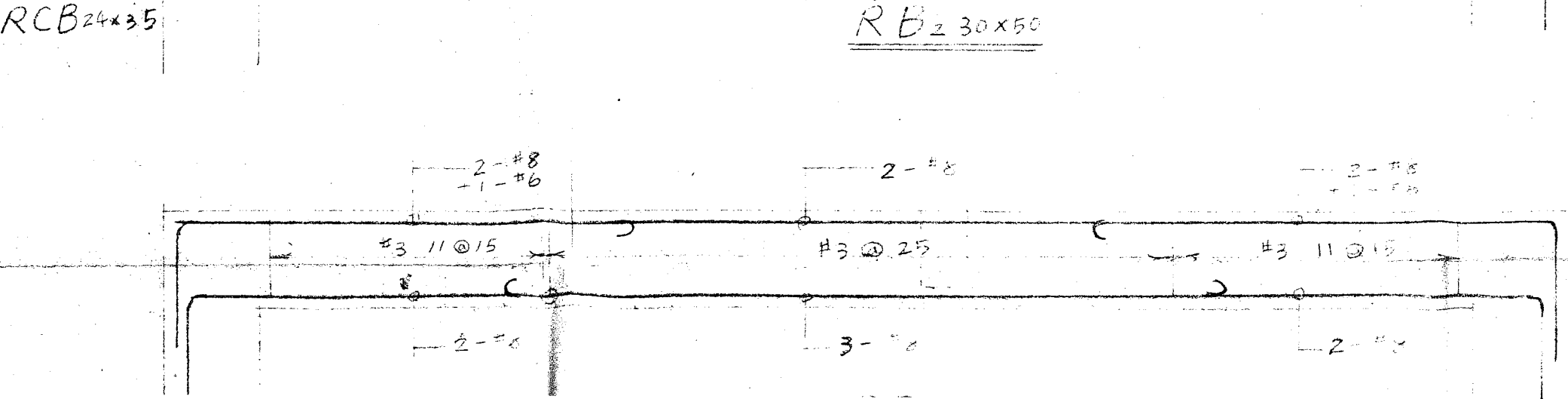
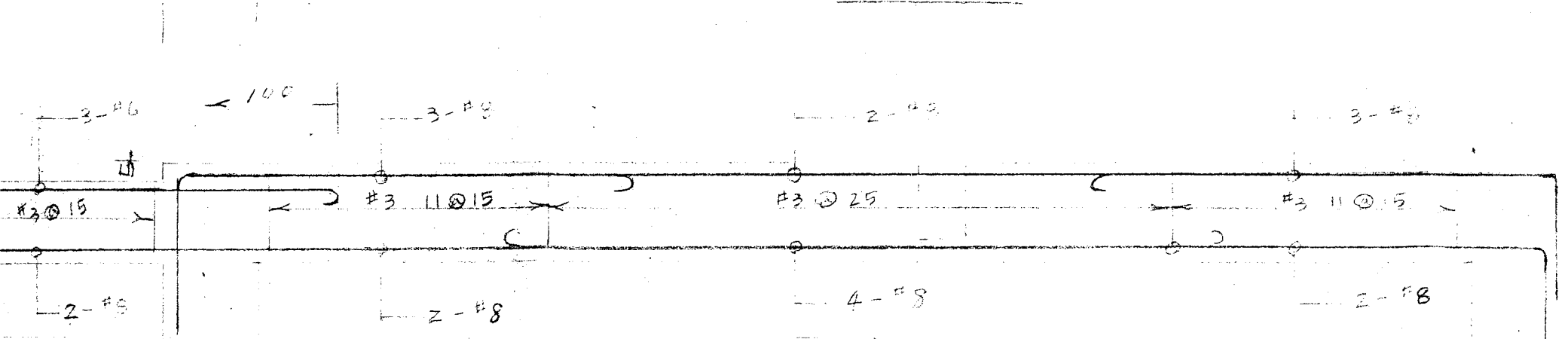
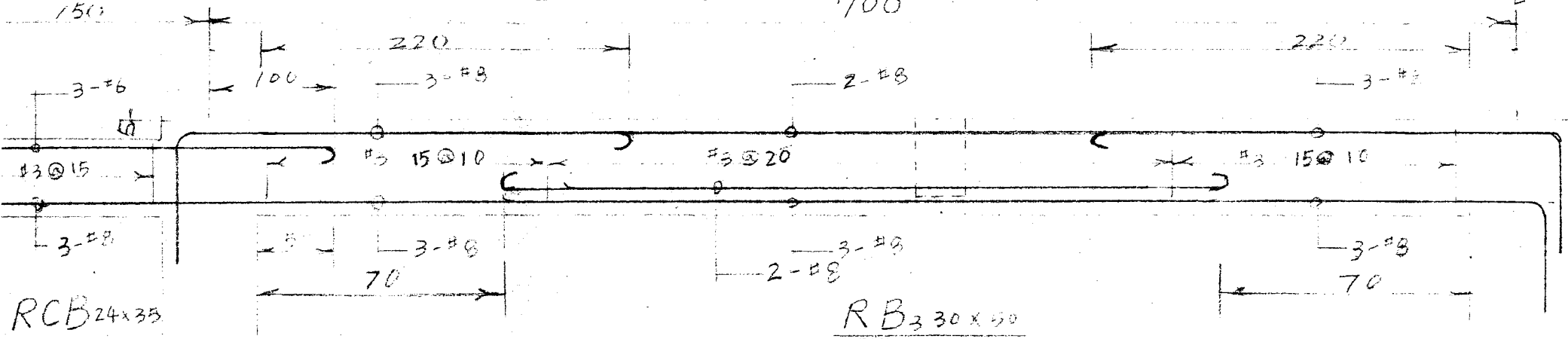
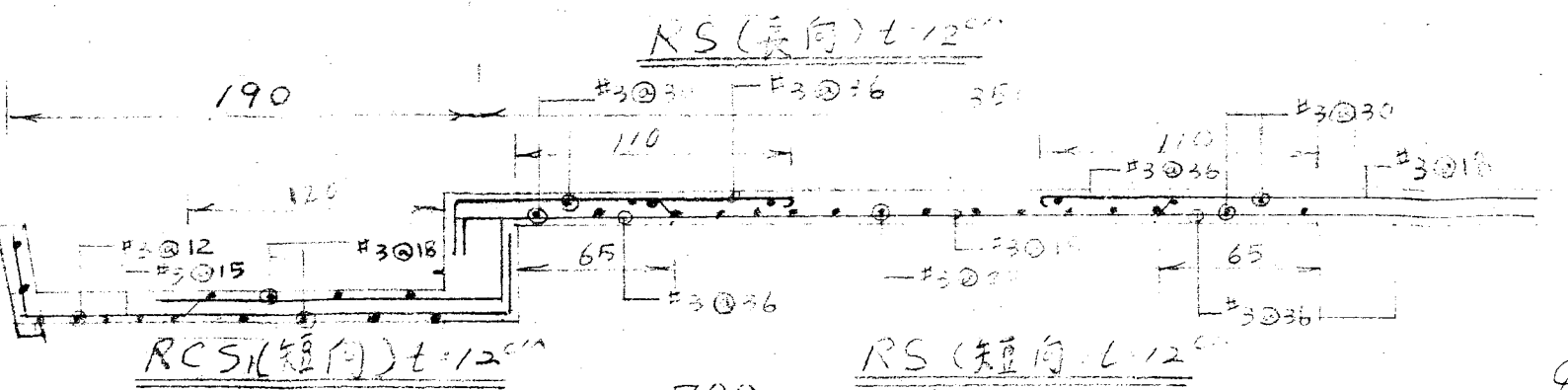
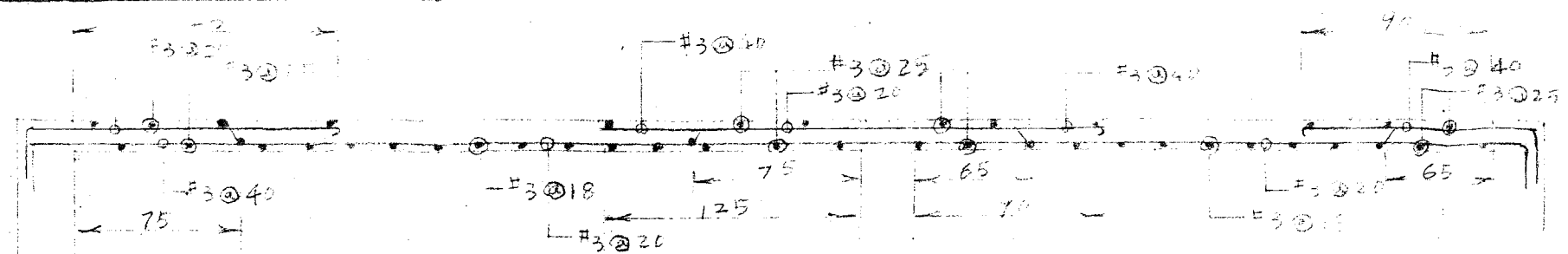
J

K

L

M

N



1

2

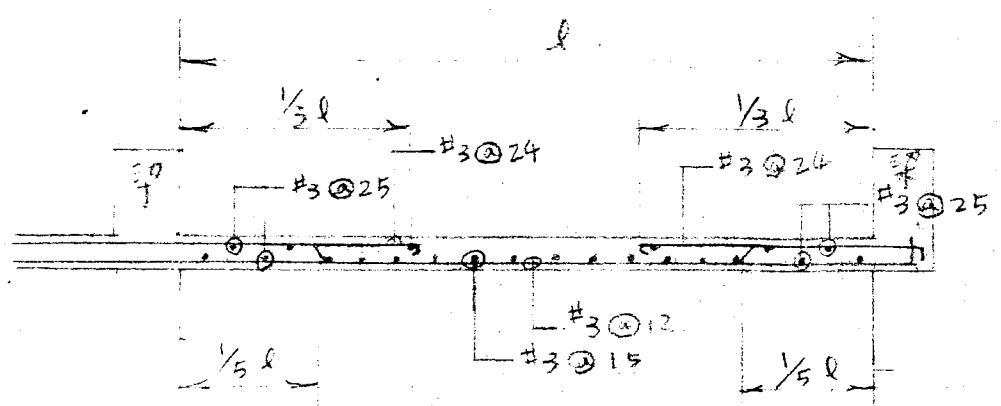
3

4

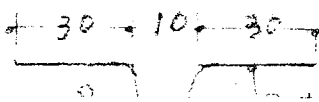
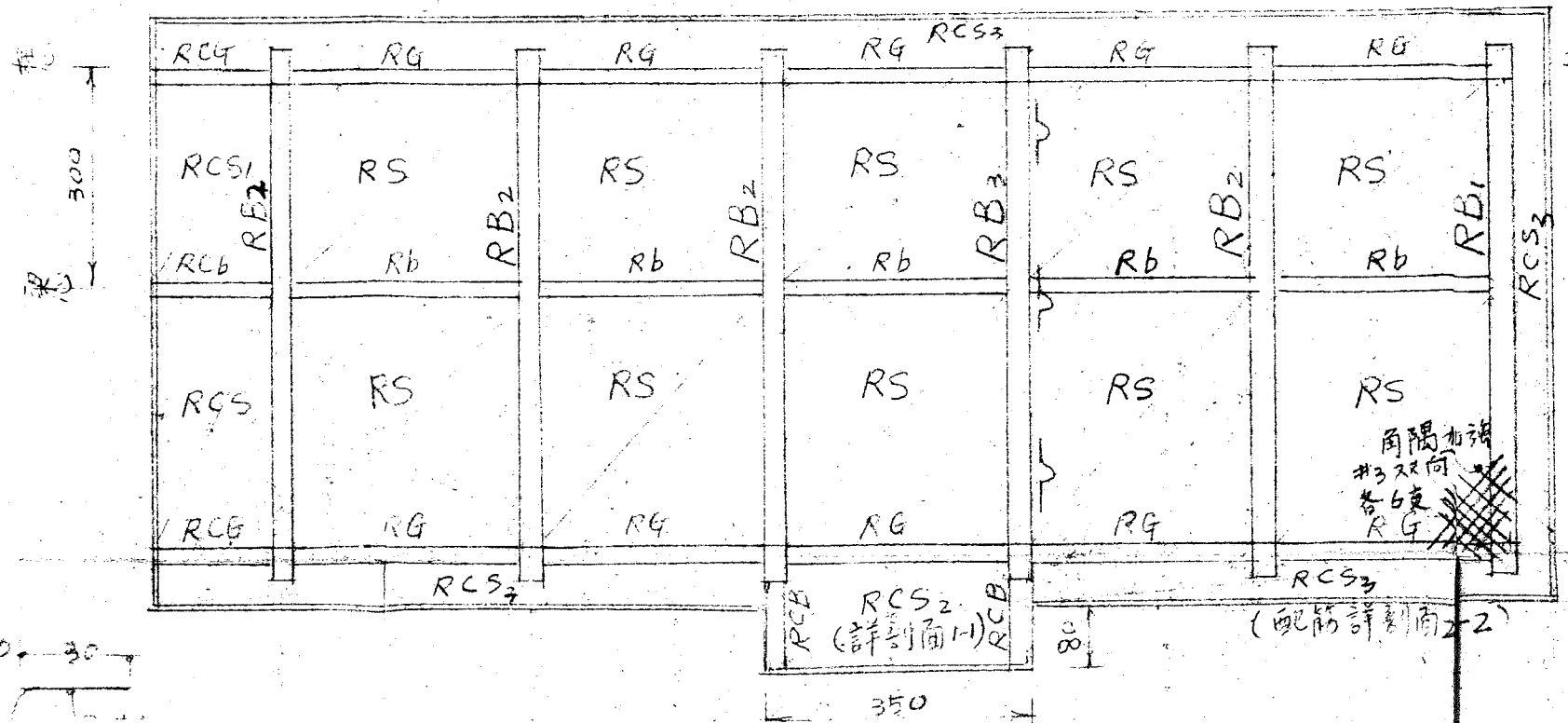
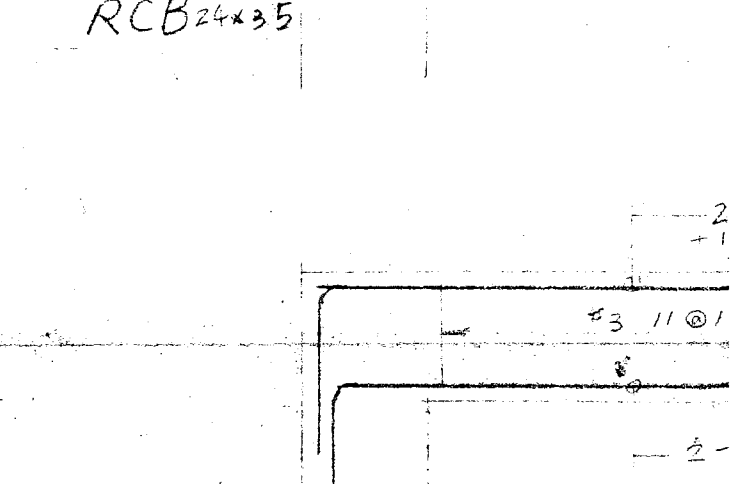
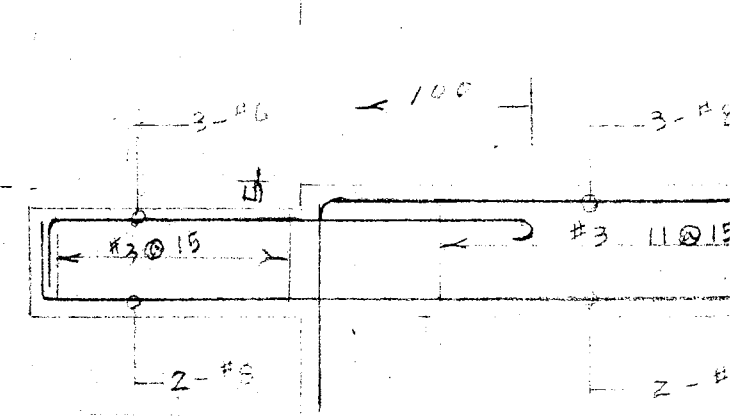
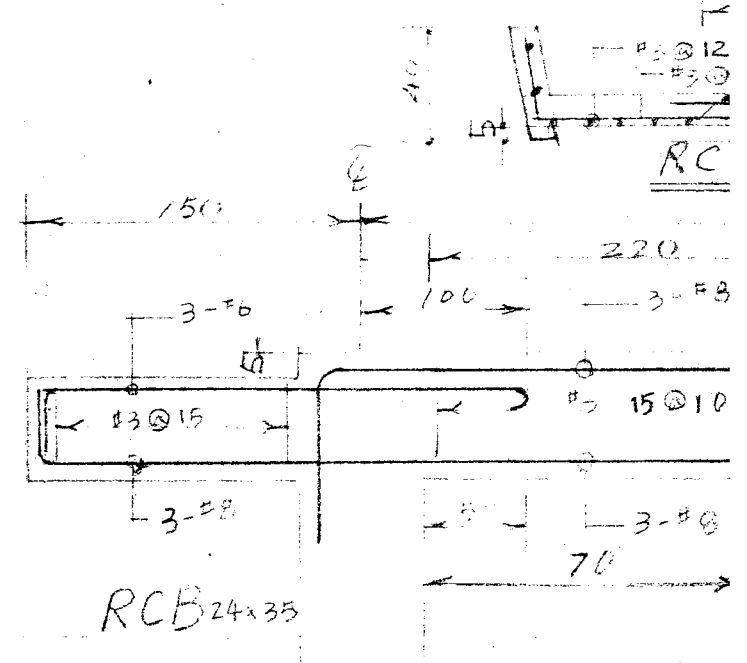
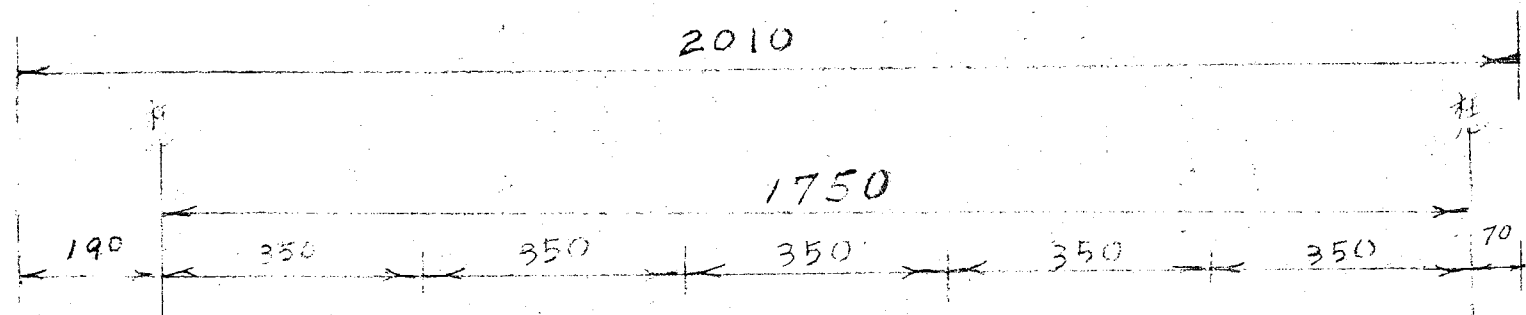
5

A B C D E F G H

拾飾類別 室別	地面		平頂		內牆		樓底	
	磨石子	馬賽克	粉水泥	水泥粉光刷漆	貼白磁磚到頂	粉水泥	粉水泥	粉水泥刷水漆
修理工場			○	○			○	○
器材儲存室	○			○			○	○
工具室	○			○			○	○
試驗室	○			○			○	○
電焊室			○	○			○	○
廁所	○			○	○			

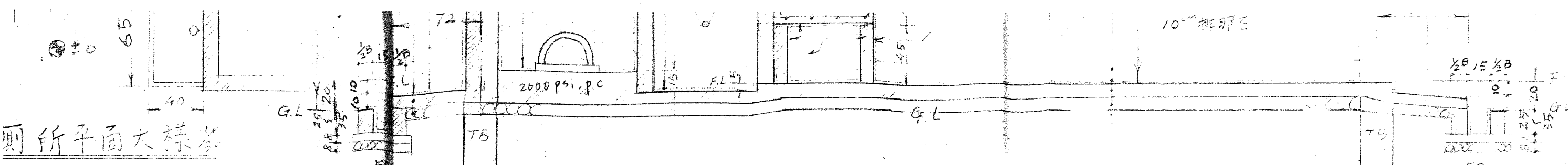


RCS1(長向) 1/30 l = 12cm



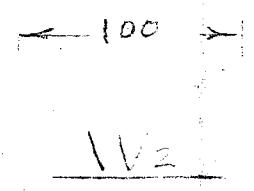
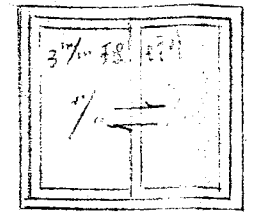
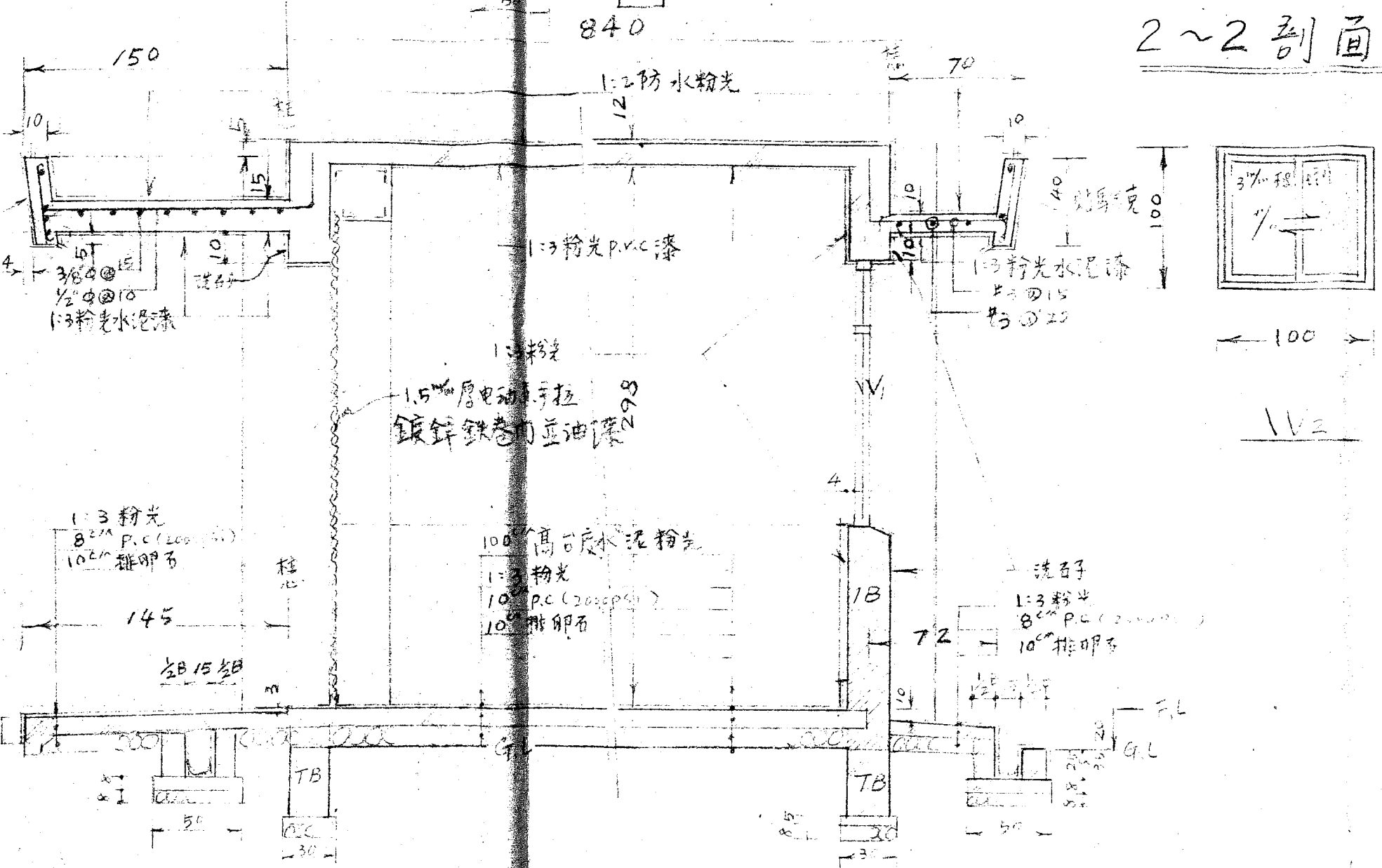
1
2
3
4
5

2
+1
#3 11@1
2-#



廁所平面大樣

2~2 剖面 1/30



1~1 剖面 1/30

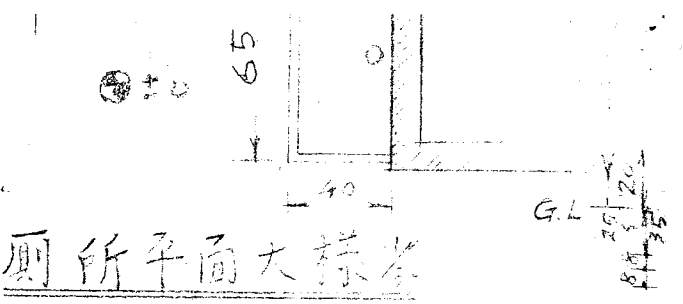
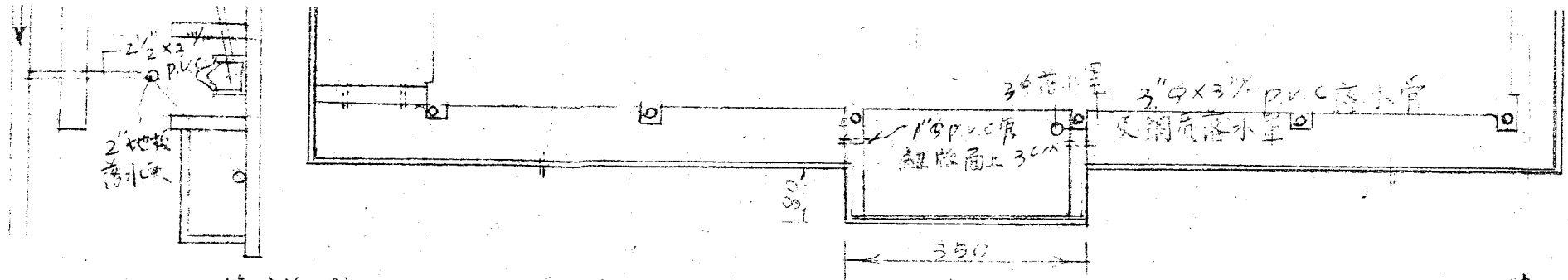
次數	日期	修改內容	修改	校核	批准
----	----	------	----	----	----

蘭陽發電廠
清熱分廠 修理
課 築 建
臺灣電力公司

臺灣電力公司

設計	王世哲	審核	
製圖	和秀	審定	陸永
校核		批准	陸永

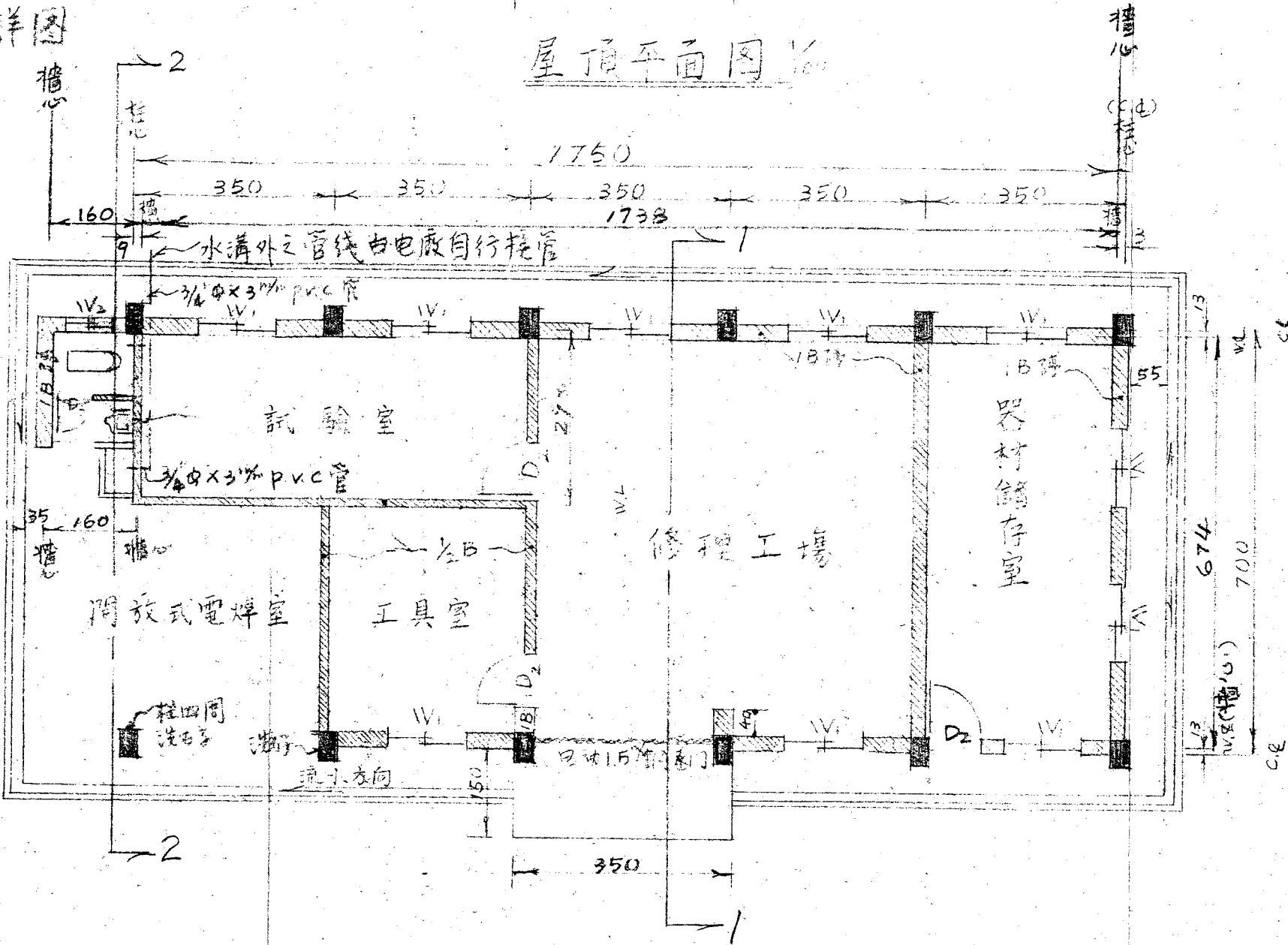
比尺 1/30
平面 立面 剖面



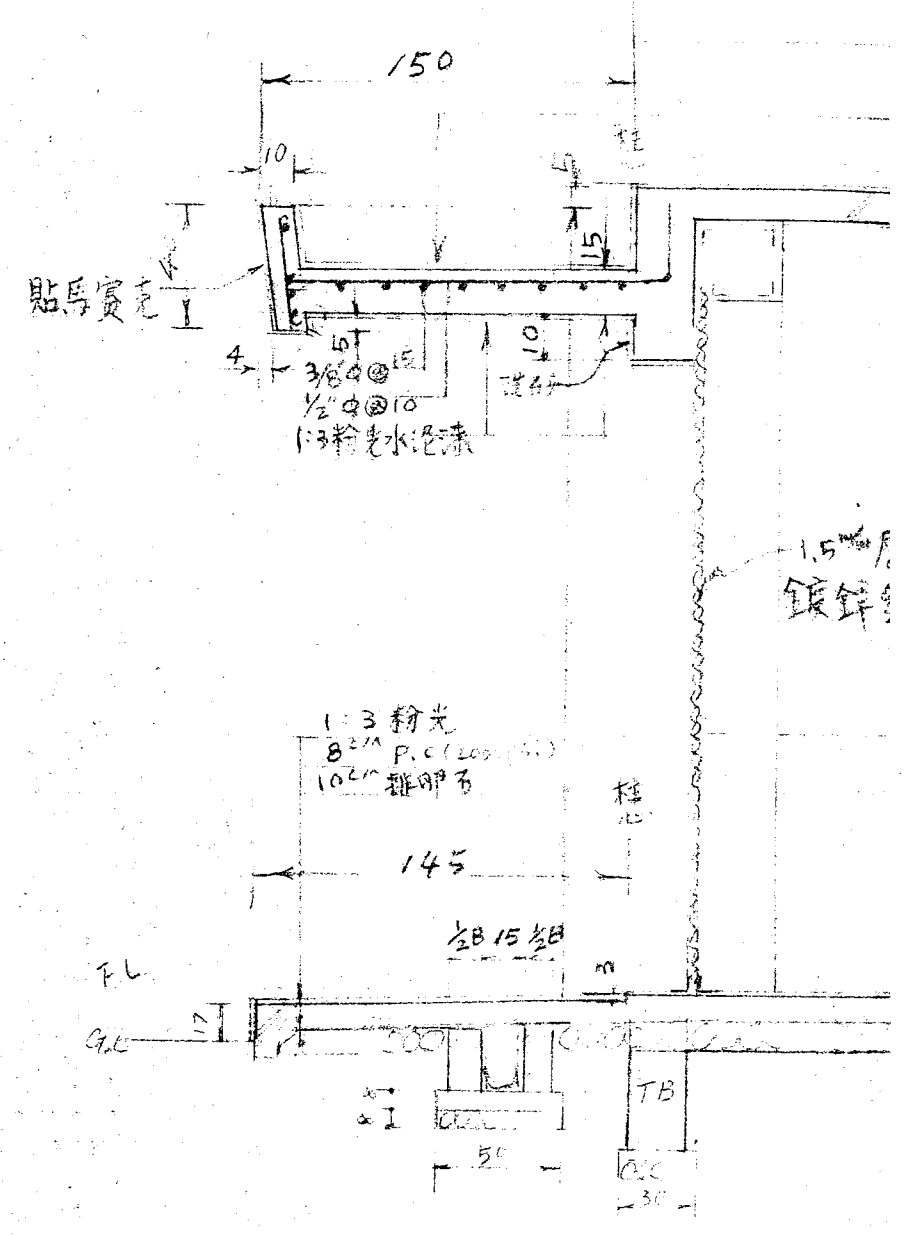
廁所平面大樣

污排水管詳圖

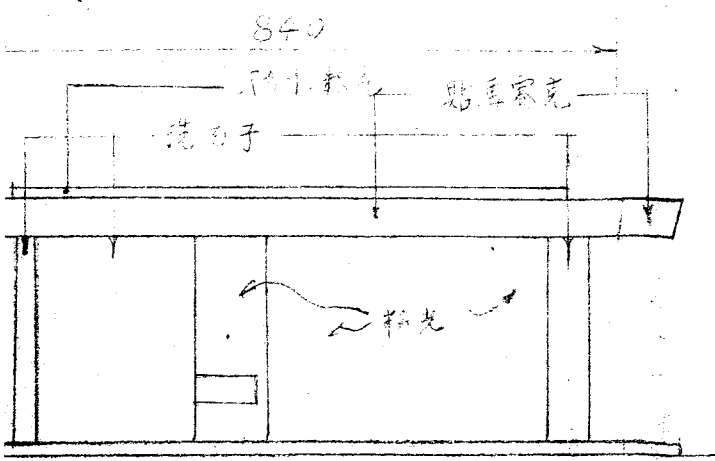
屋頂平面圖 1/100



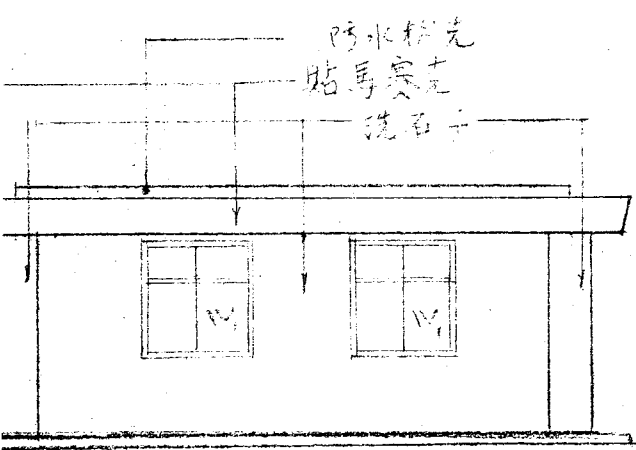
平面圖 1/100



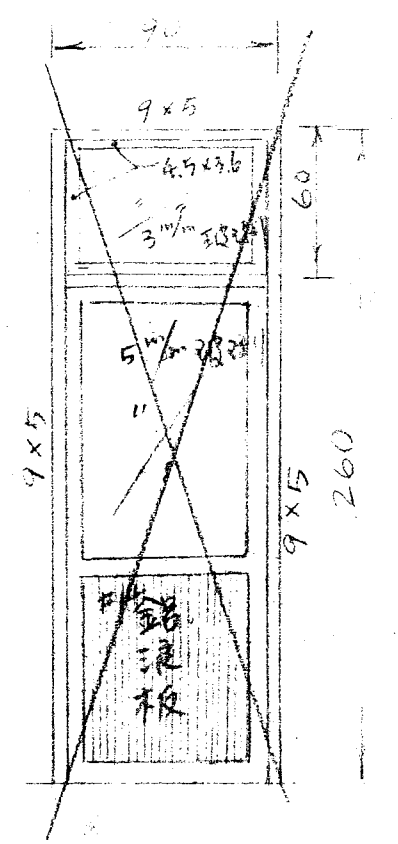
6
7
3
1
2



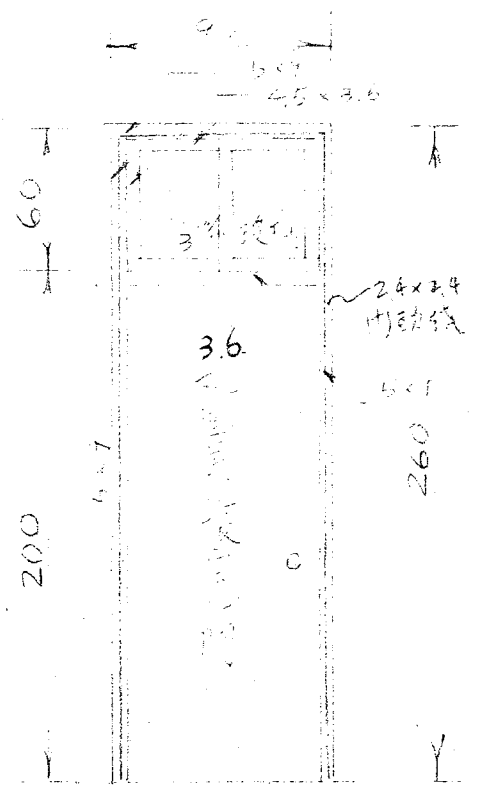
左立面图 1/100



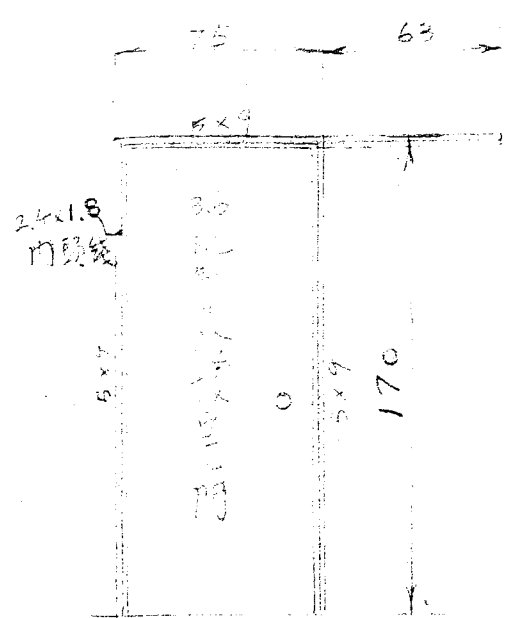
右立面图 1/100



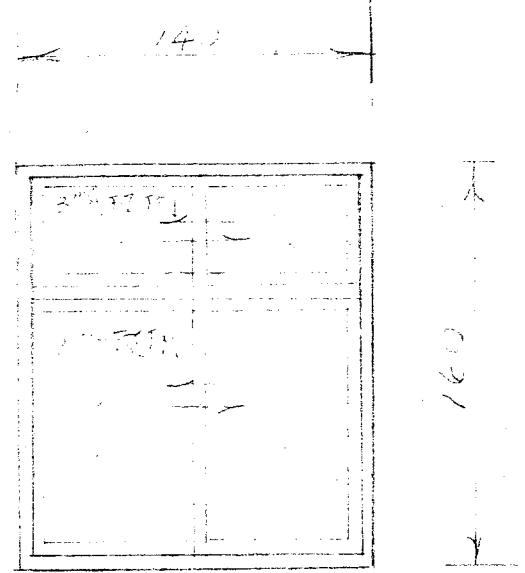
D1



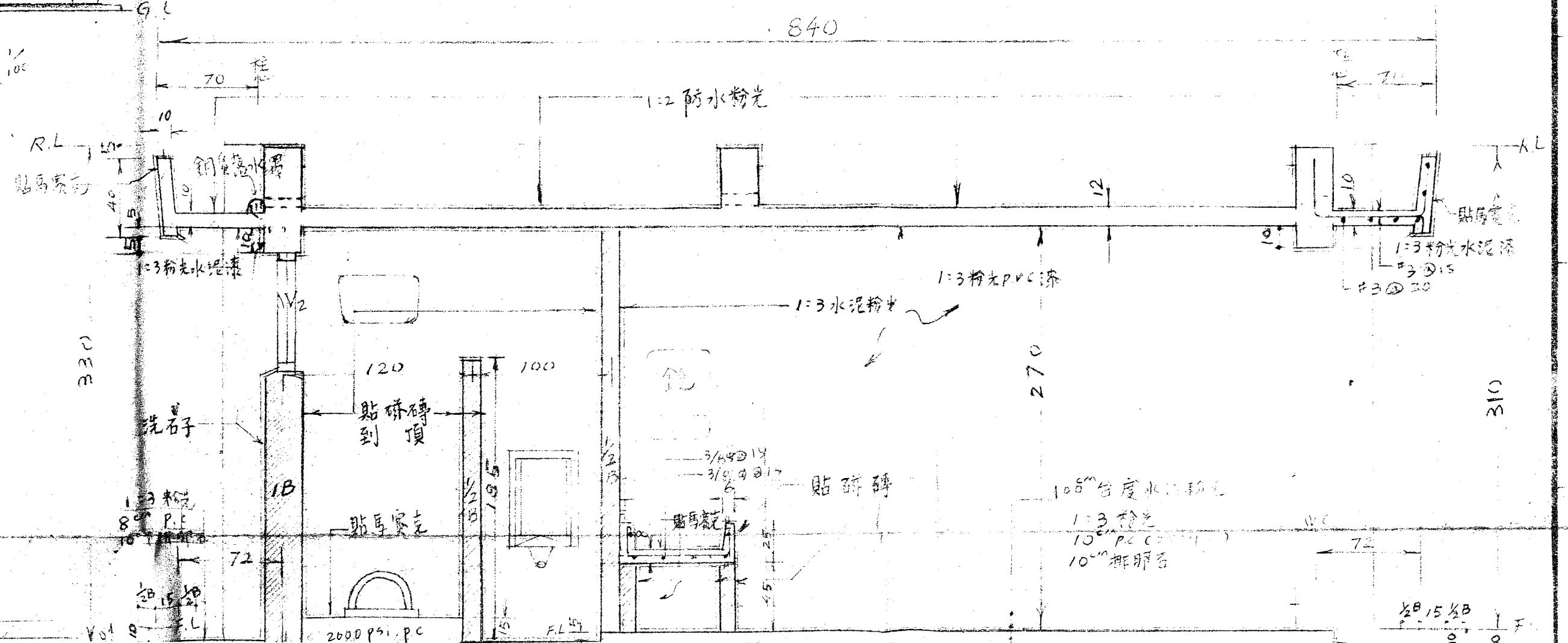
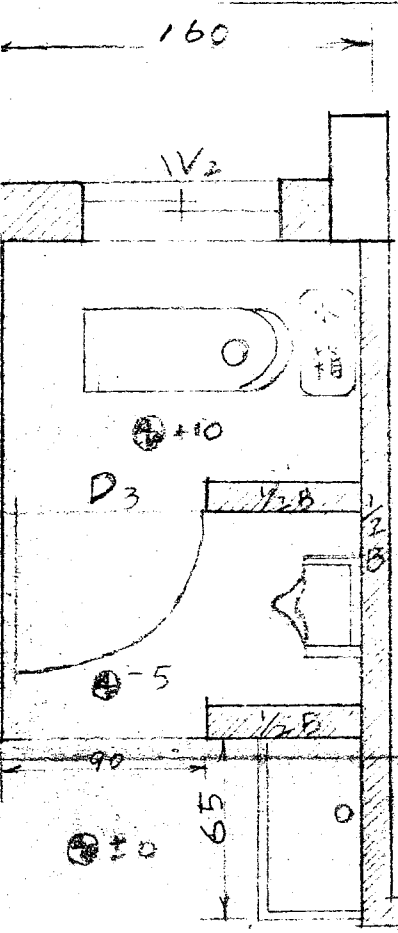
D2



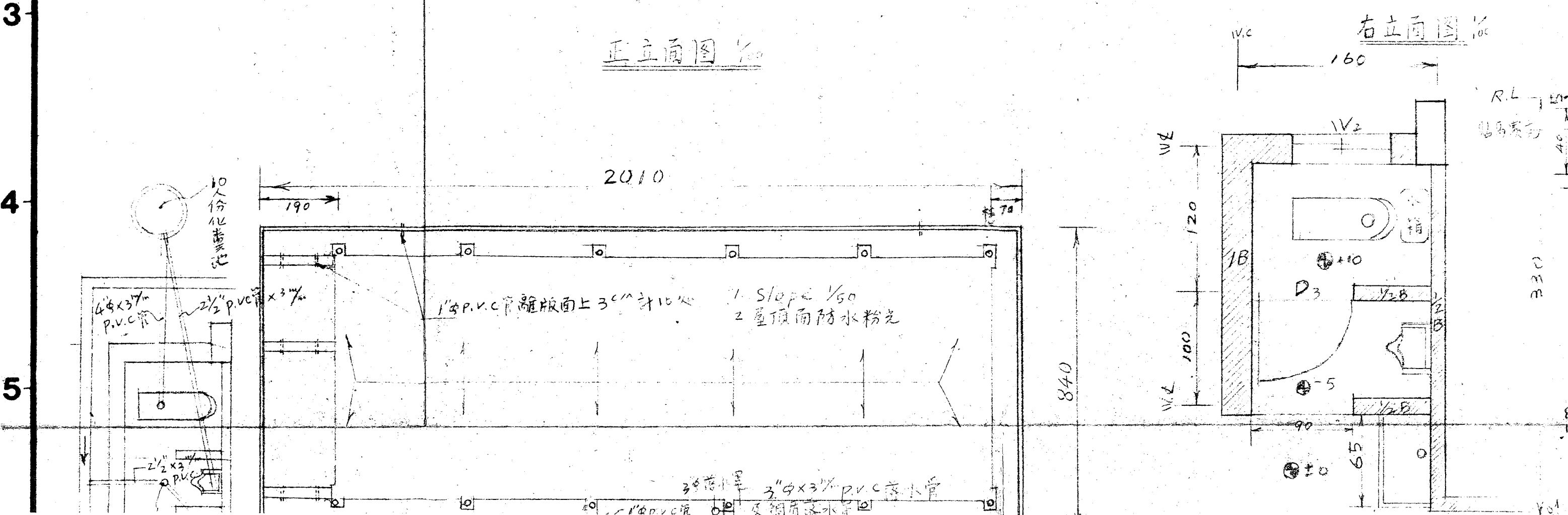
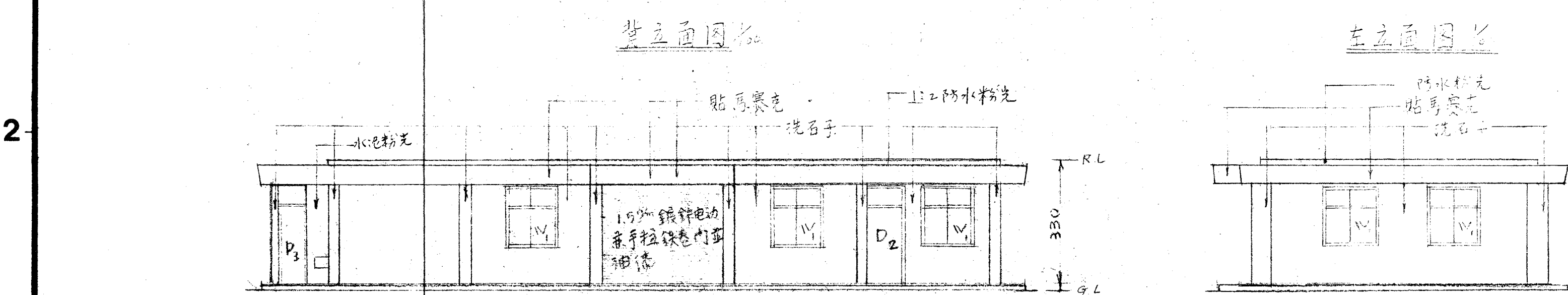
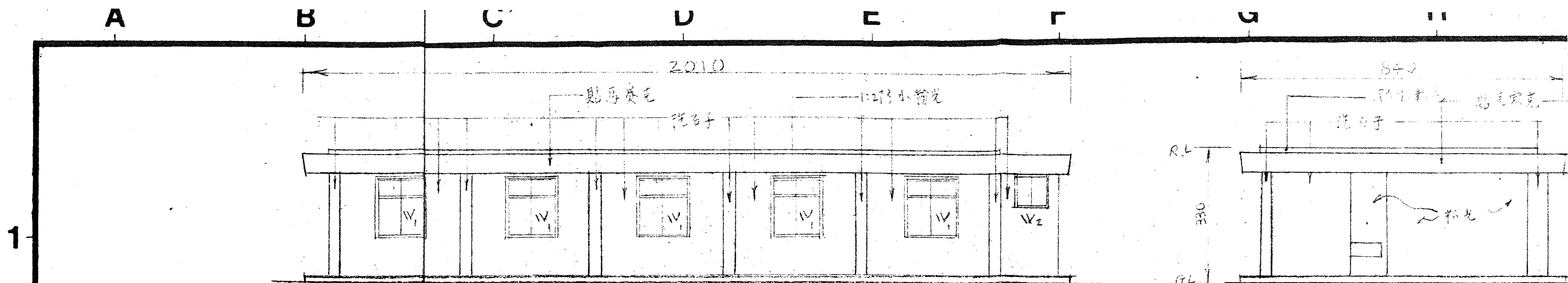
D3



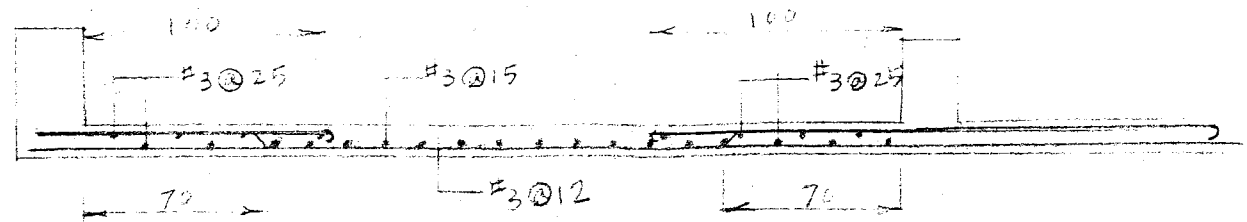
D4



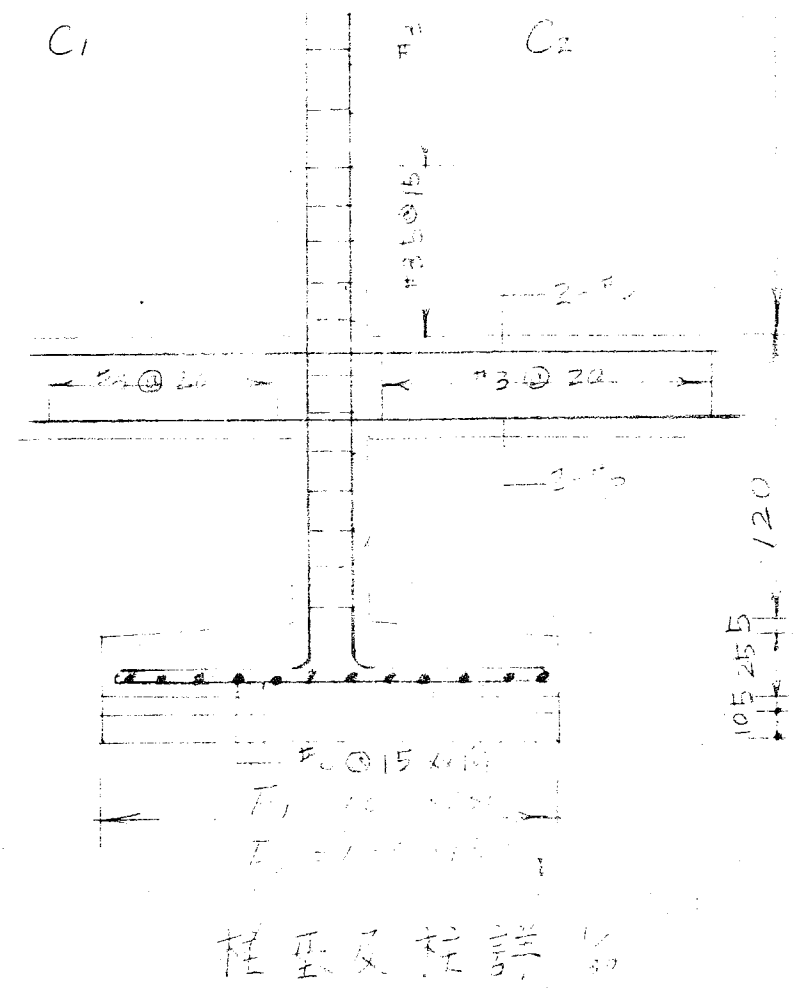
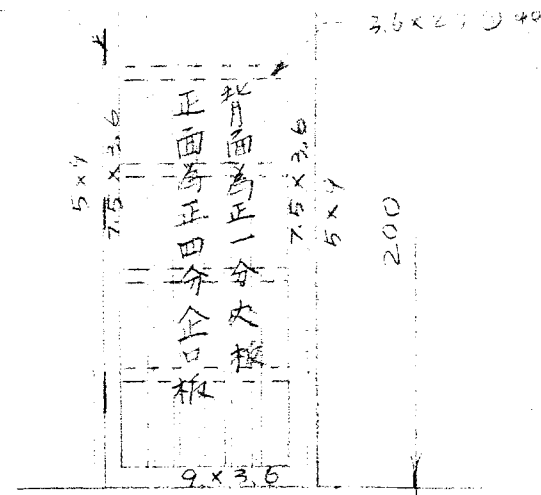
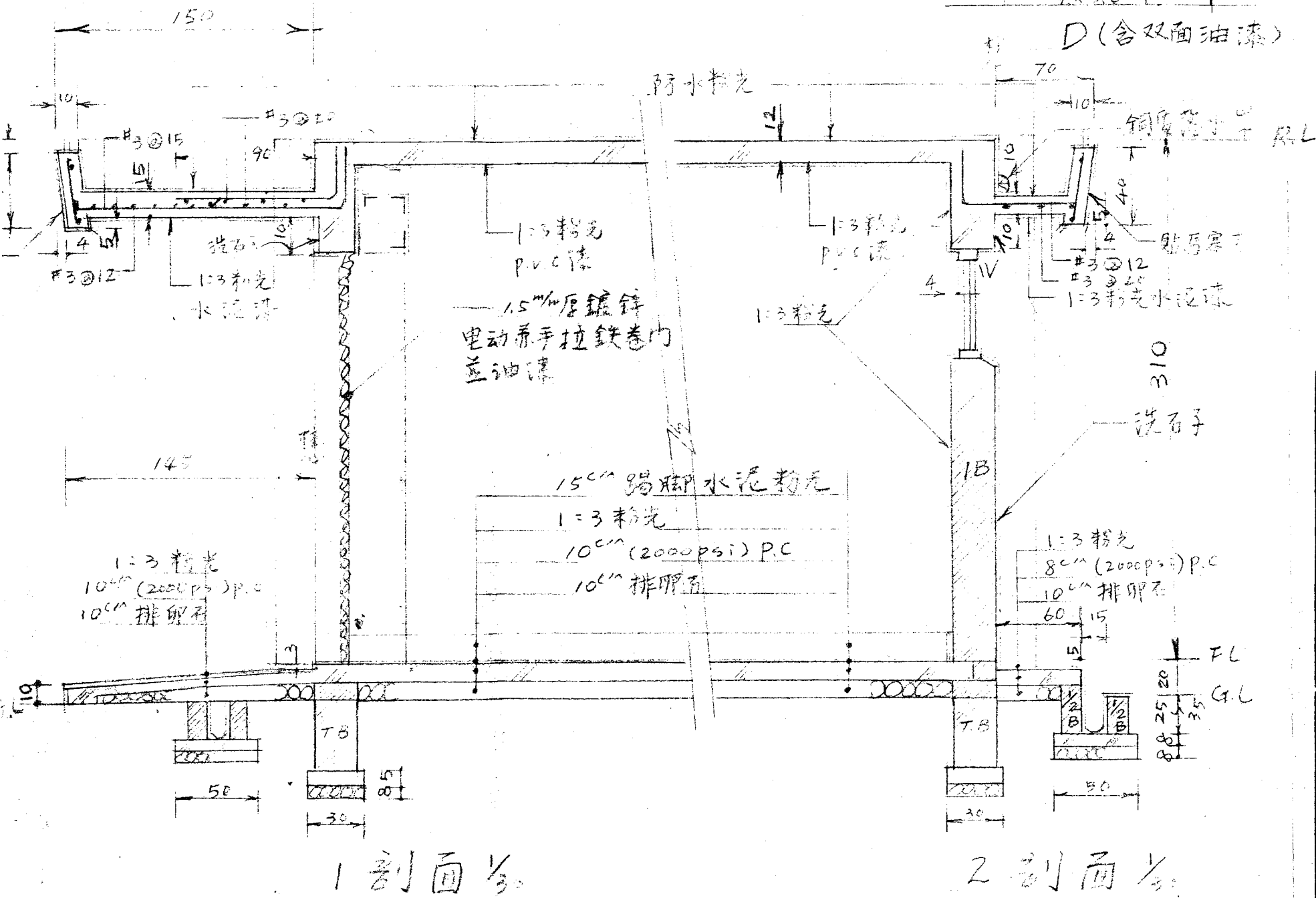
1
2
3
4
5



S (双向) $t=12\text{cm}$

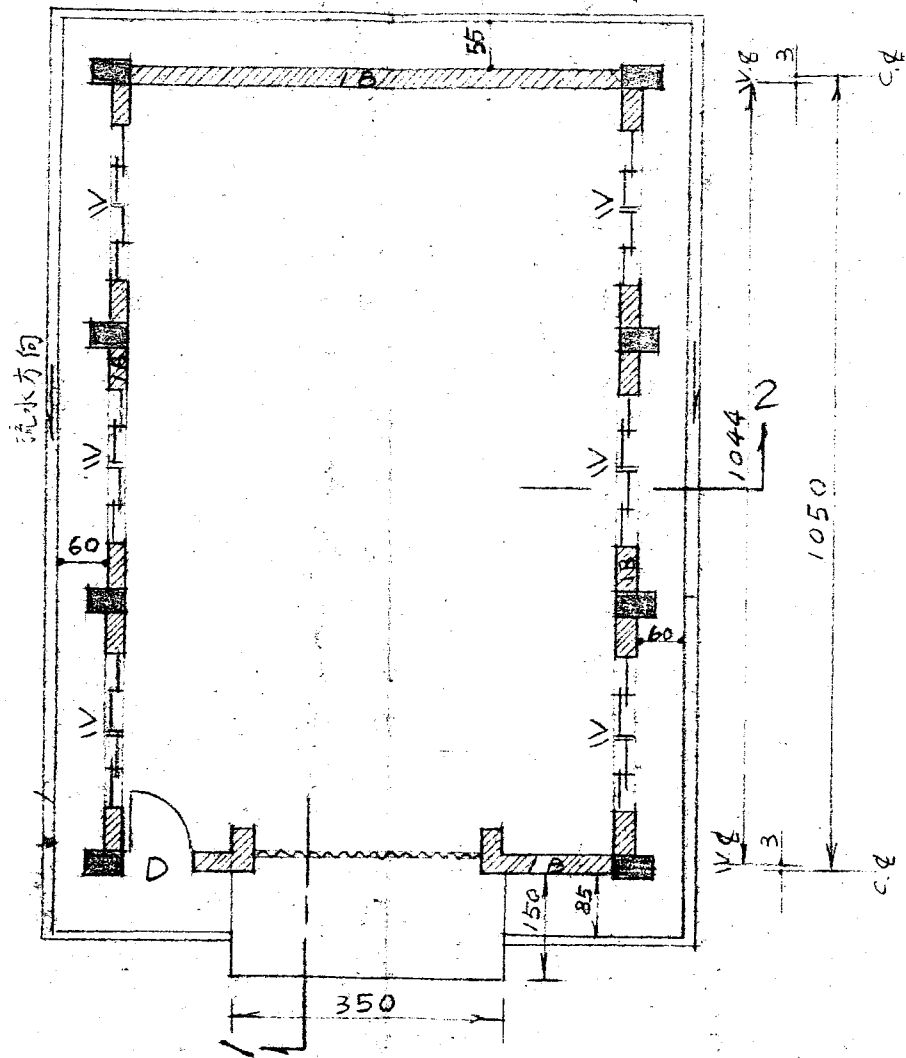
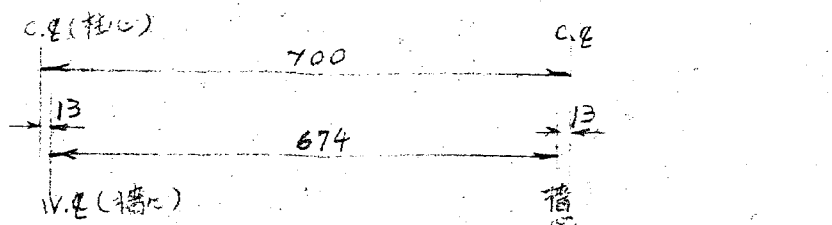


RCS₁ (長向) $t=12\text{cm}$



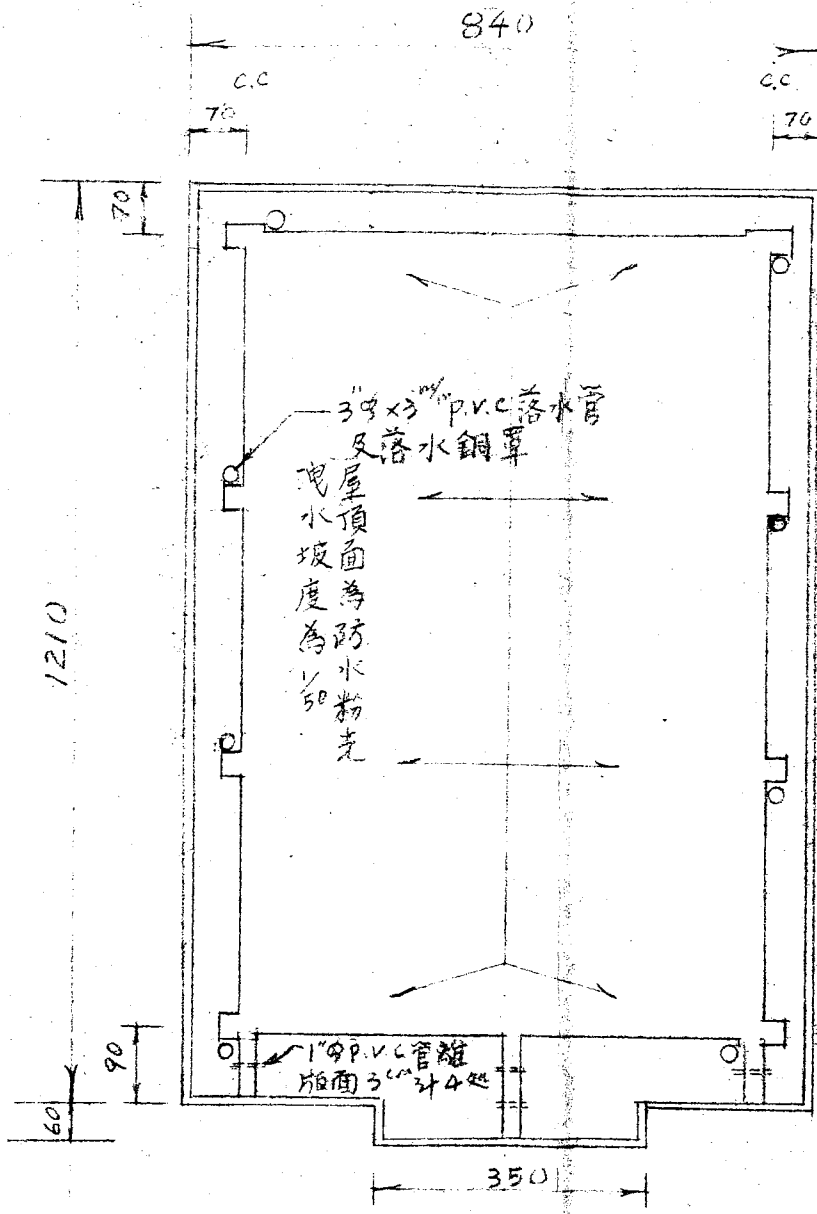
次數	日期	修改內容	修改	校核	批准
<p>蘭陽發電廠</p> <p>清熱分廠倉</p> <p>台灣電力公司</p>					
設計	王世堃		會核	陸永瑞	
製圖	杜英武		審定	陸永瑞	
校核	杜英武		批准	陸永瑞	
比尺	1/30 1/100	平面立面結構門窗			

正面图 1/100

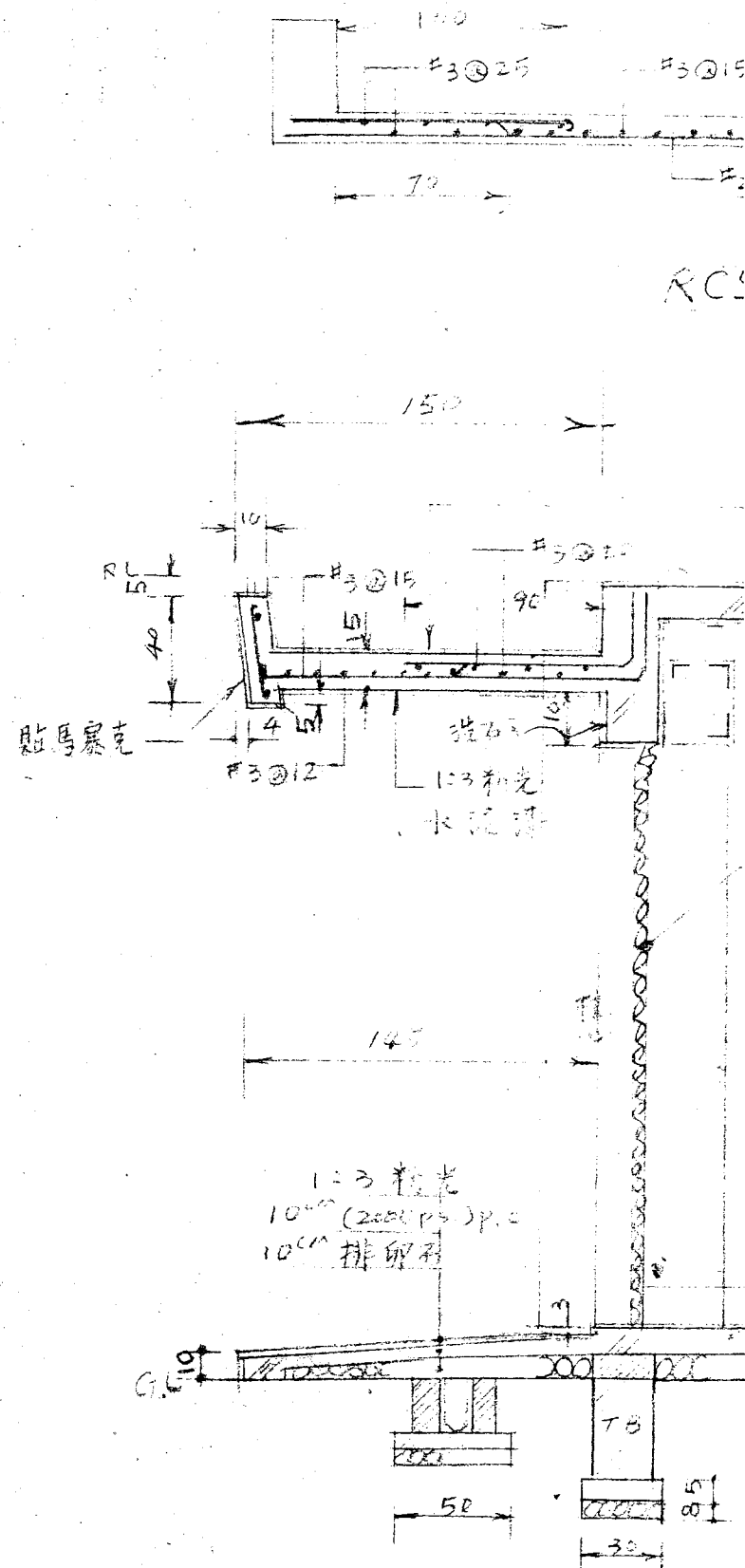


平面图 1/100

背面图 1/100



屋面平面图 1/100



1 剖

H

I

J

K

L

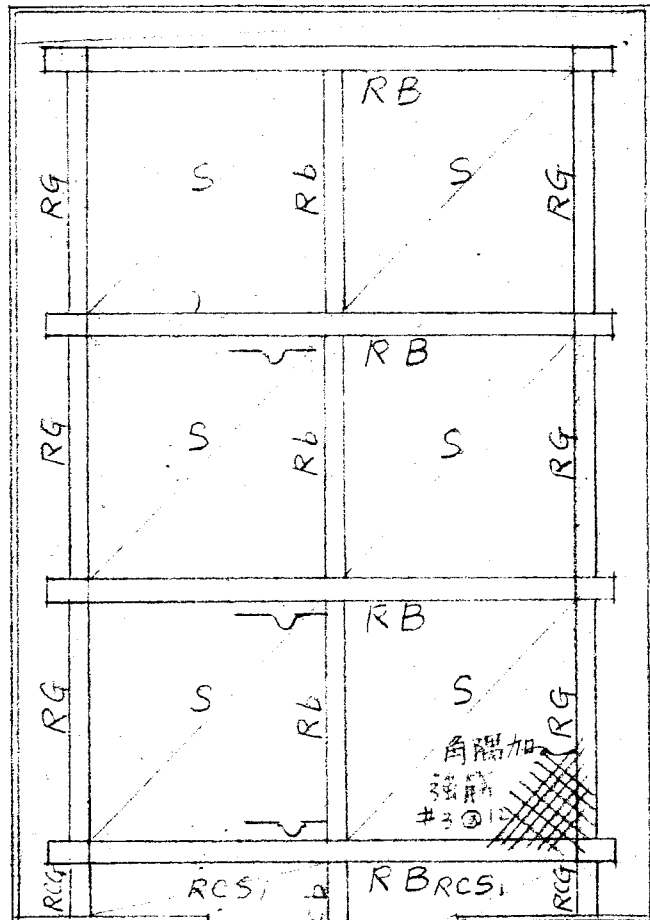
IVI

N



掛鉤埋設RB梁中央計三支

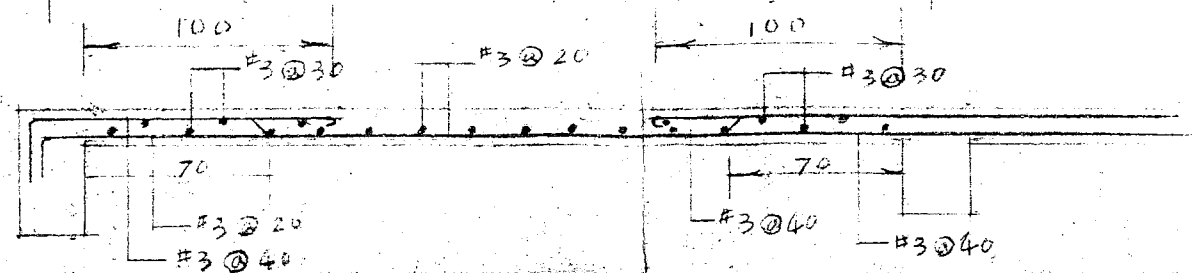
840



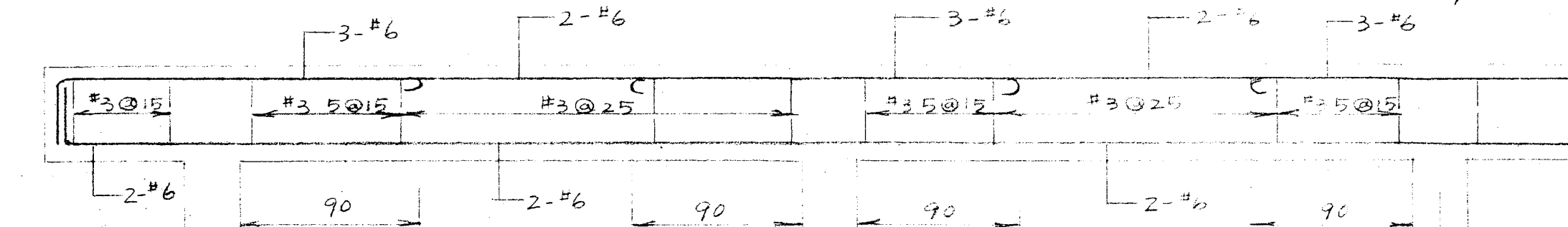
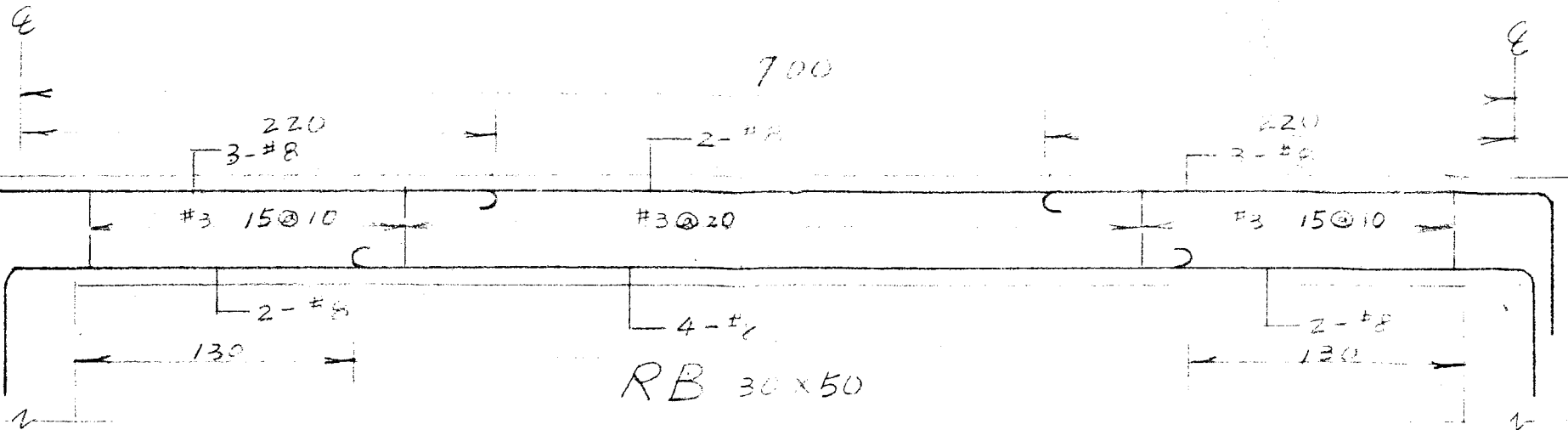
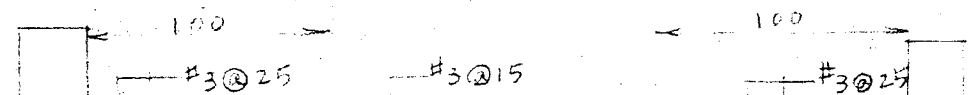
350

屋頂結構平面

350

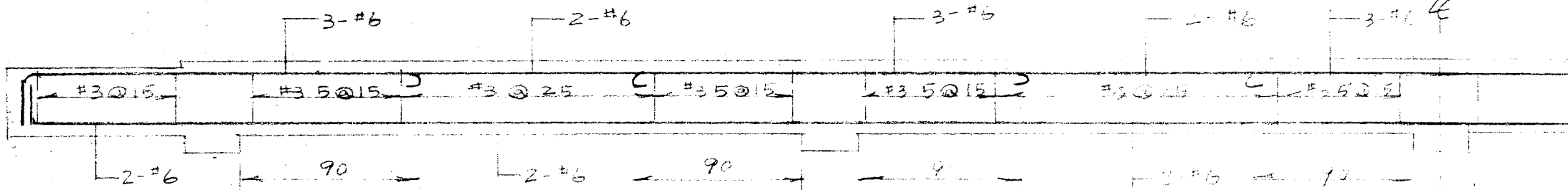


S(雙向) $t=12$ cm



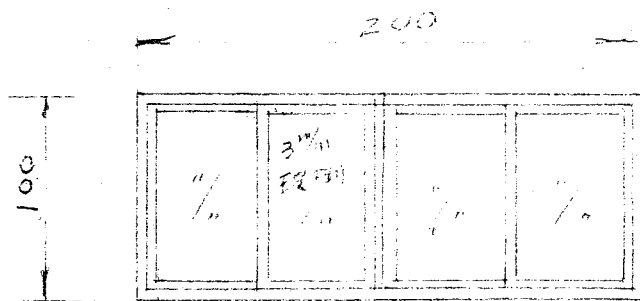
RCG

RG 24x50

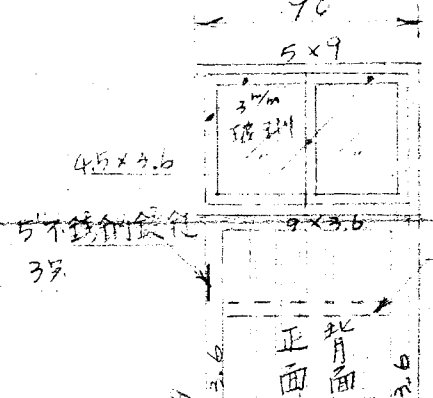


RCB 24x35

RB 24x40

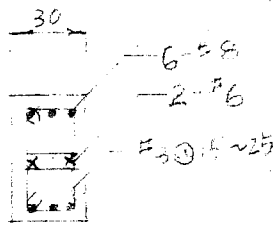


IV



60

50

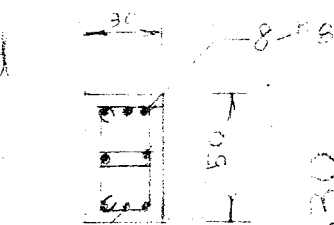


C1

#3 5@15

50

#3@25



C2

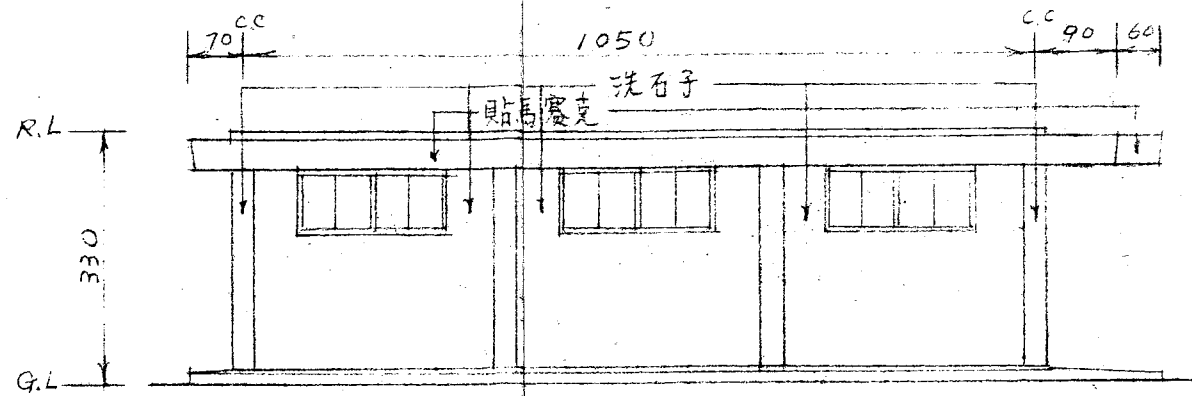
1

2

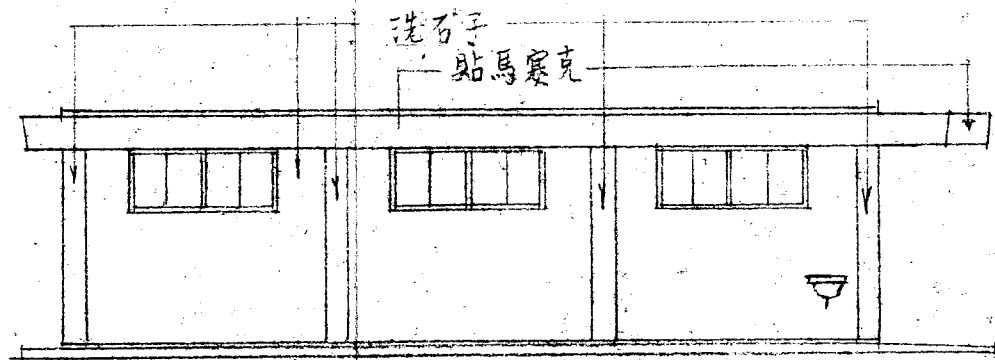
3

4

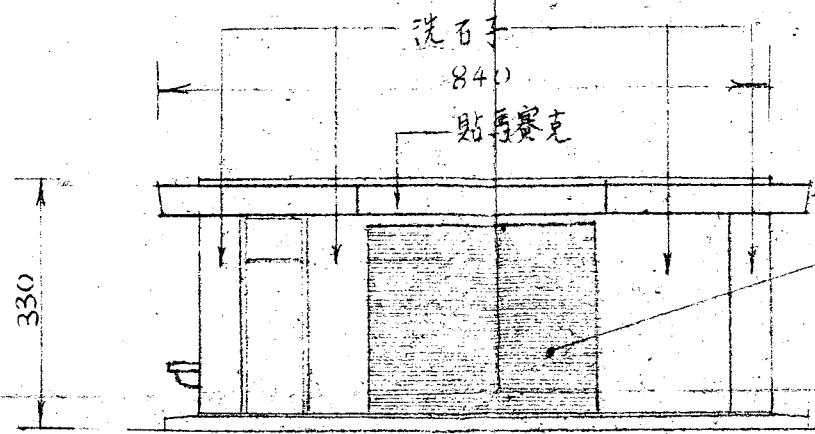
5



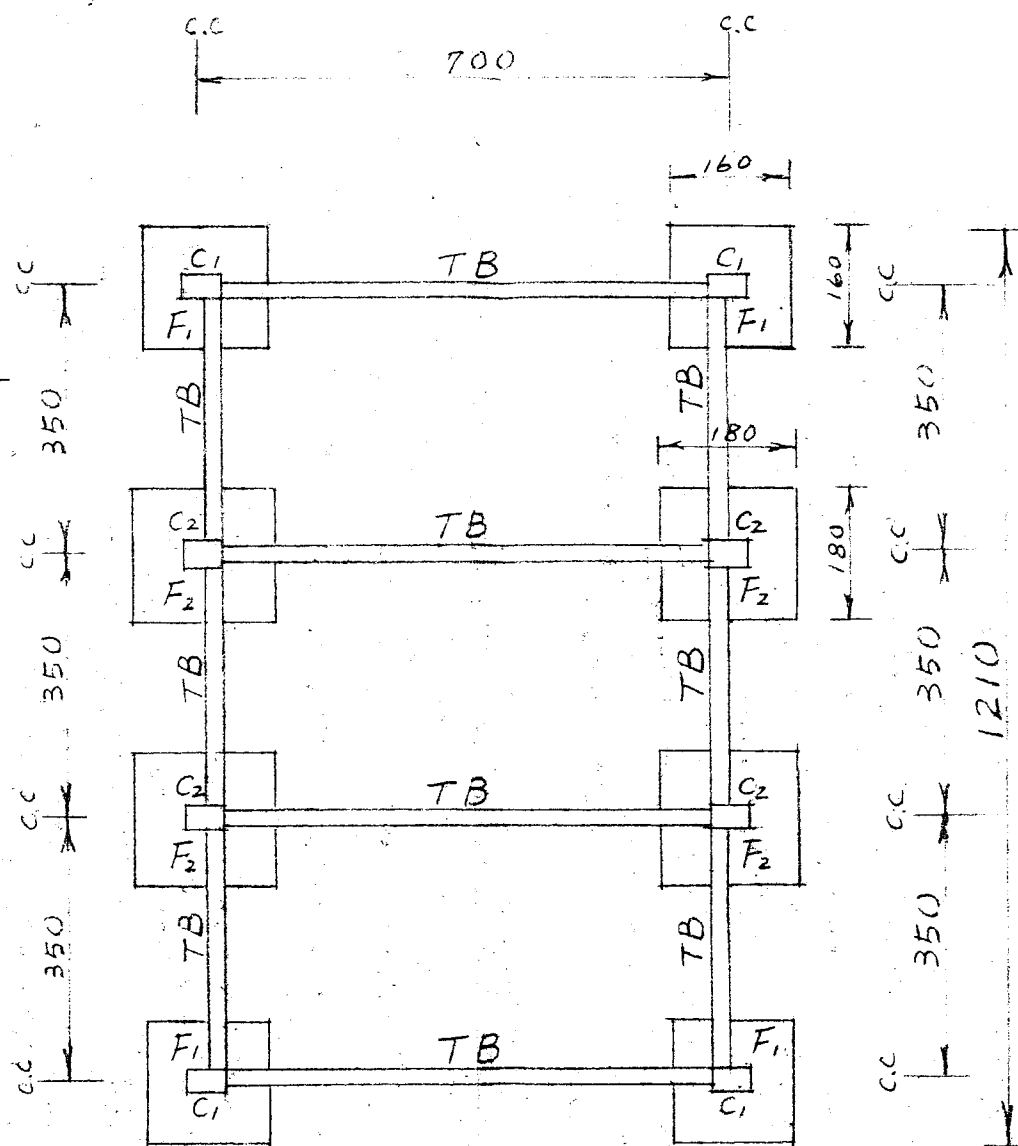
右側面圖 1/100



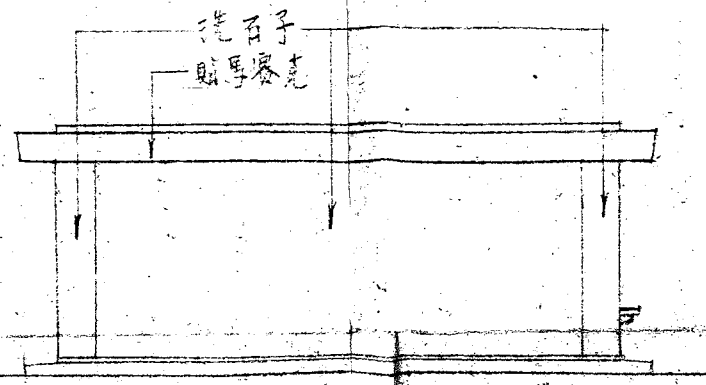
左側面圖 1/100



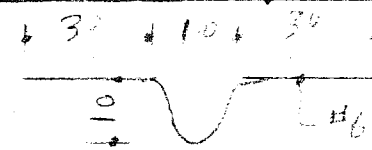
正面圖 1/100



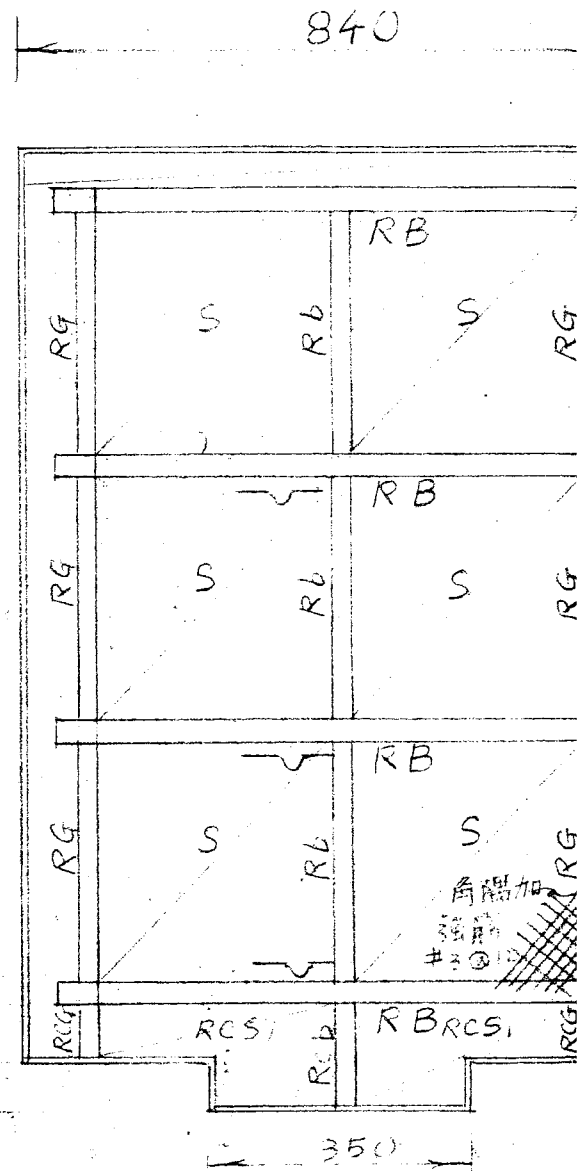
一樓結構平面 1/100



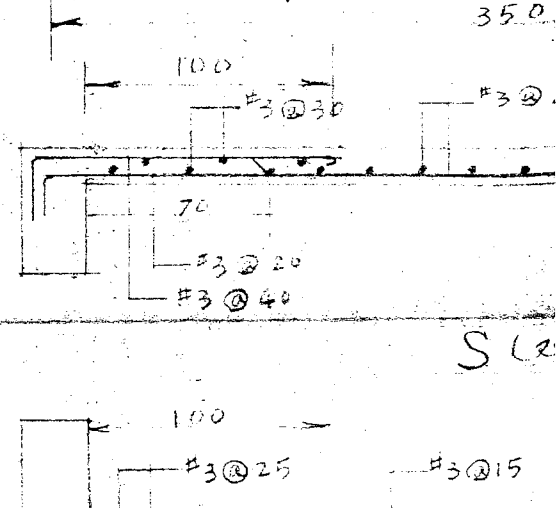
背面圖 1/100

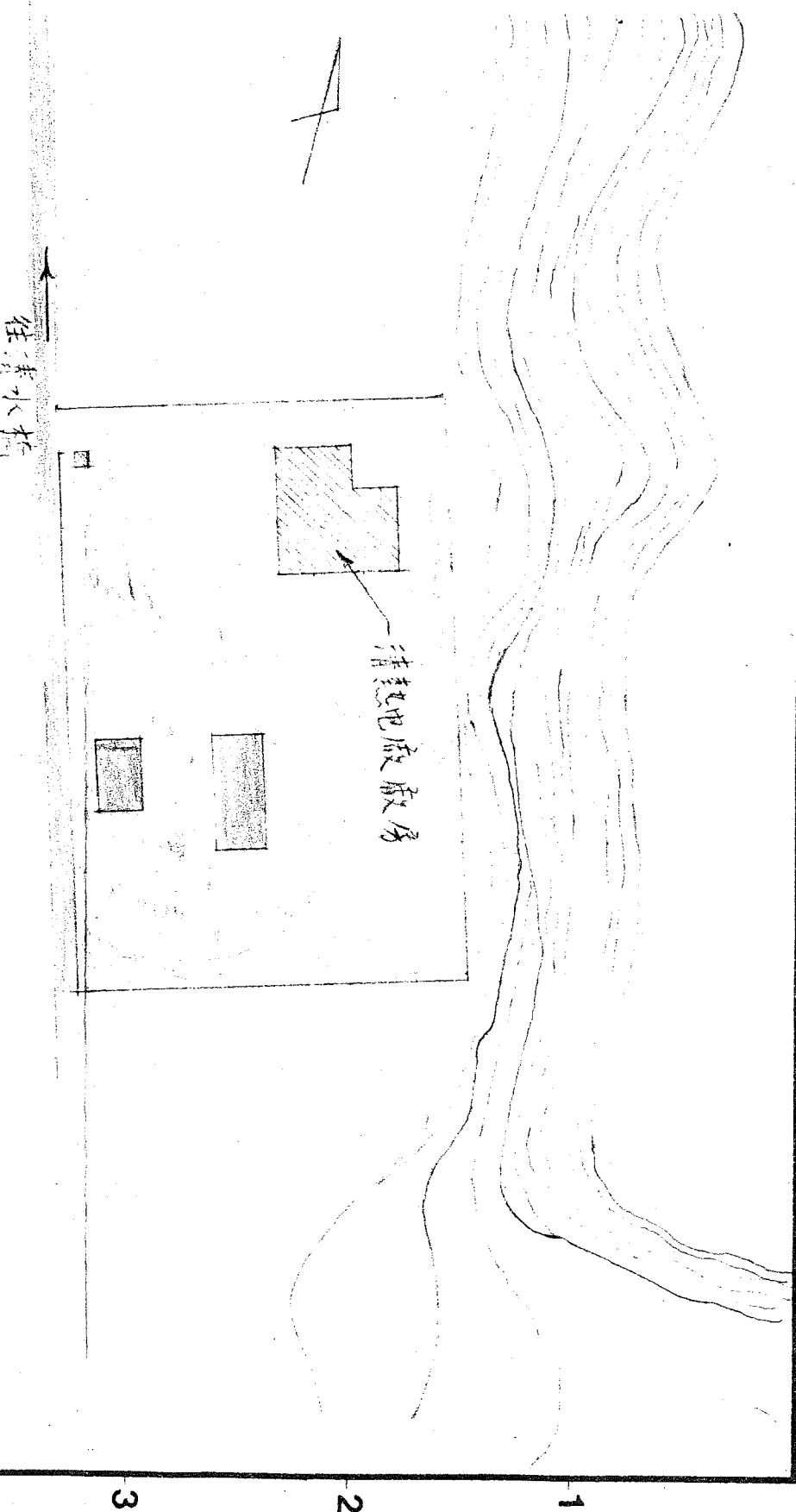


掛鉤埋設RB梁中央



屋頂結構平面



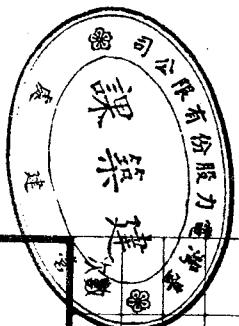


位置圖 1/300

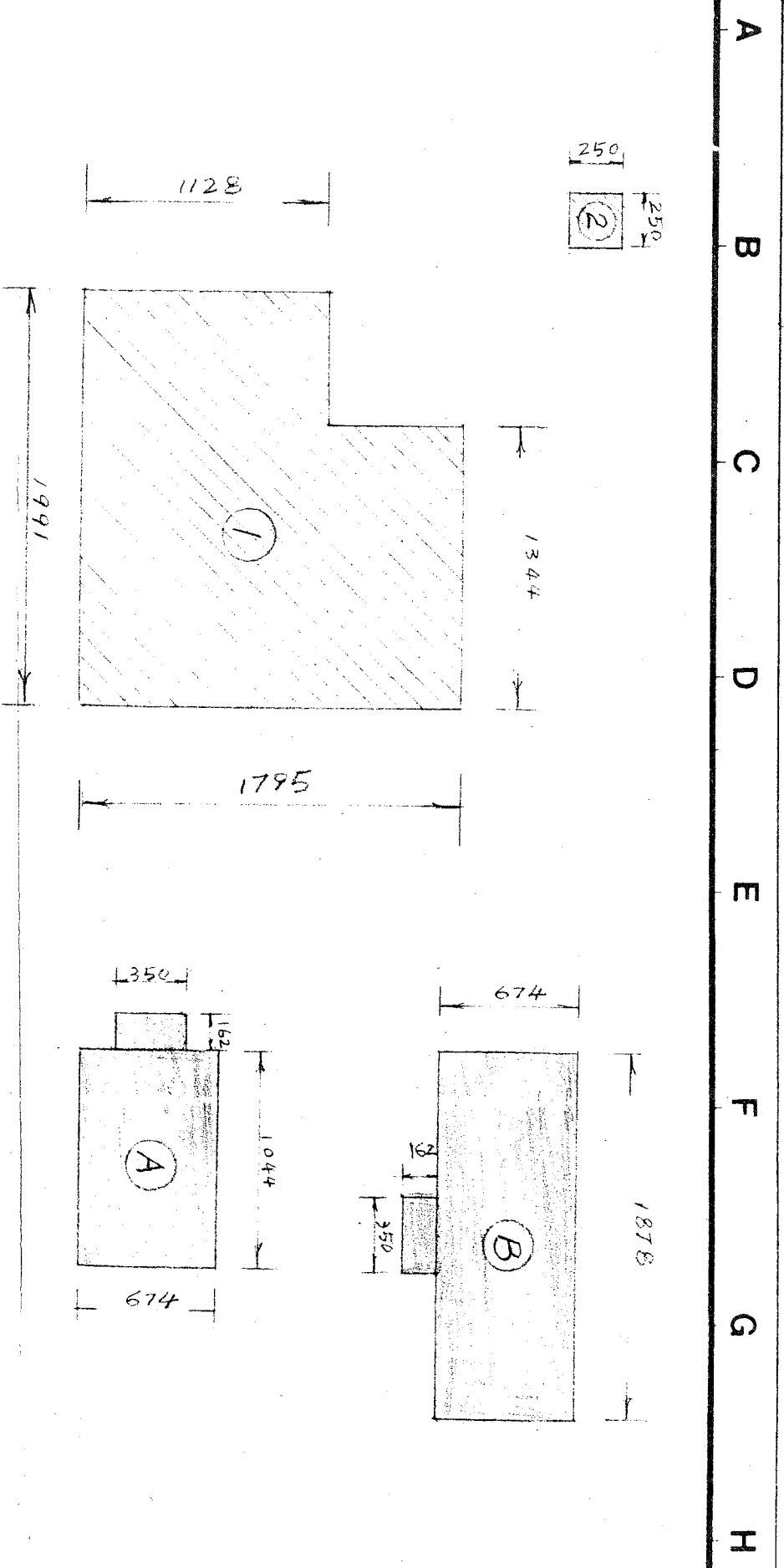
稱名積	計算式
基地面積	$60.00 \times 90.00 = 5,400 \text{ m}^2$
原有房屋樓地板面積	① 一樓 $19.91 \times 11.28 + 13.44 \times (17.95 - 11.28) = 314.23 \text{ m}^2$ 二樓 $19.91 \times 11.28 + 13.44 \times (17.95 - 11.28) = 314.23 \text{ m}^2$ $2.50 \times 2.50 = 6.25 \text{ m}^2$
原有房屋建築面積	$314.23 + 6.25 = 320.48$
新建建築面積	A) $10.44 \times 6.74 + (1.62 - 0.5) \times 3.50 = 74.21 \text{ m}^2$ B) $(17.38 + 1.60) \times 6.74 + (1.62 - 0.5) \times 3.50 = 131.85 \text{ m}^2$ $320.48 + 74.21 + 131.85 = 526.62 \text{ m}^2$
法定空地	$5400 \times 0.5 = 2700 \text{ m}^2$
建築密度	$526.62 \div 5400 = 0.09752 = \frac{0.975}{10}$
工程造價	$206.14 \times 2800 = 577,192.00$

圖例

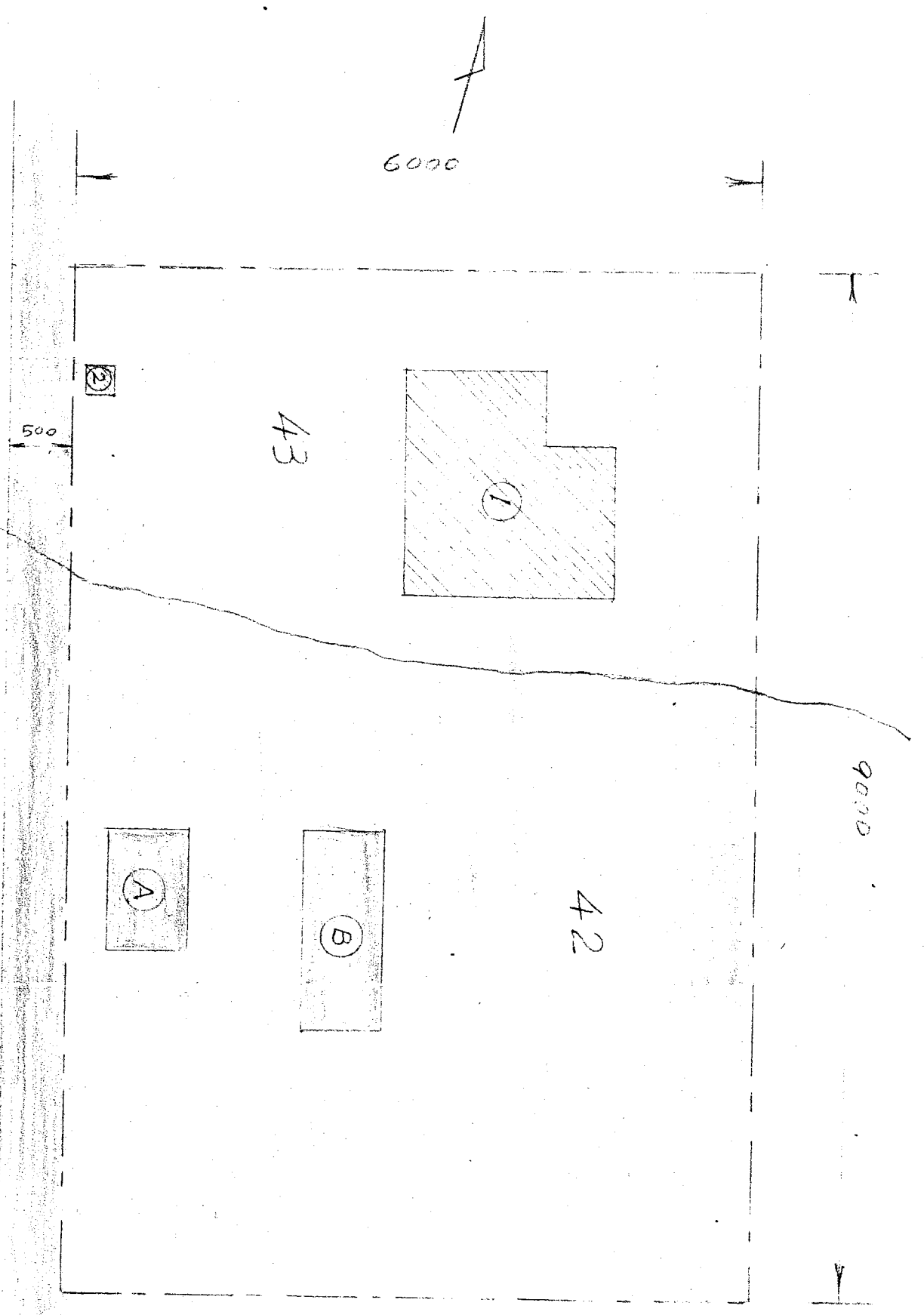
- 建築基地
- 新建房屋
- 原有房屋
- 現有道路
- 界線



設計	製圖	校核	日期	修改內容	修改	校核	批准
				陽發電廠			
蘭陽分廠會車及修理工程 基地詳圖				電力公司			
審核 審定 批准							



現有房屋平面图 1/300



配置图及基地面積計算图

10

9

8

7

6

5

4

3

2

1

A

B

C

D

E

F

G

H