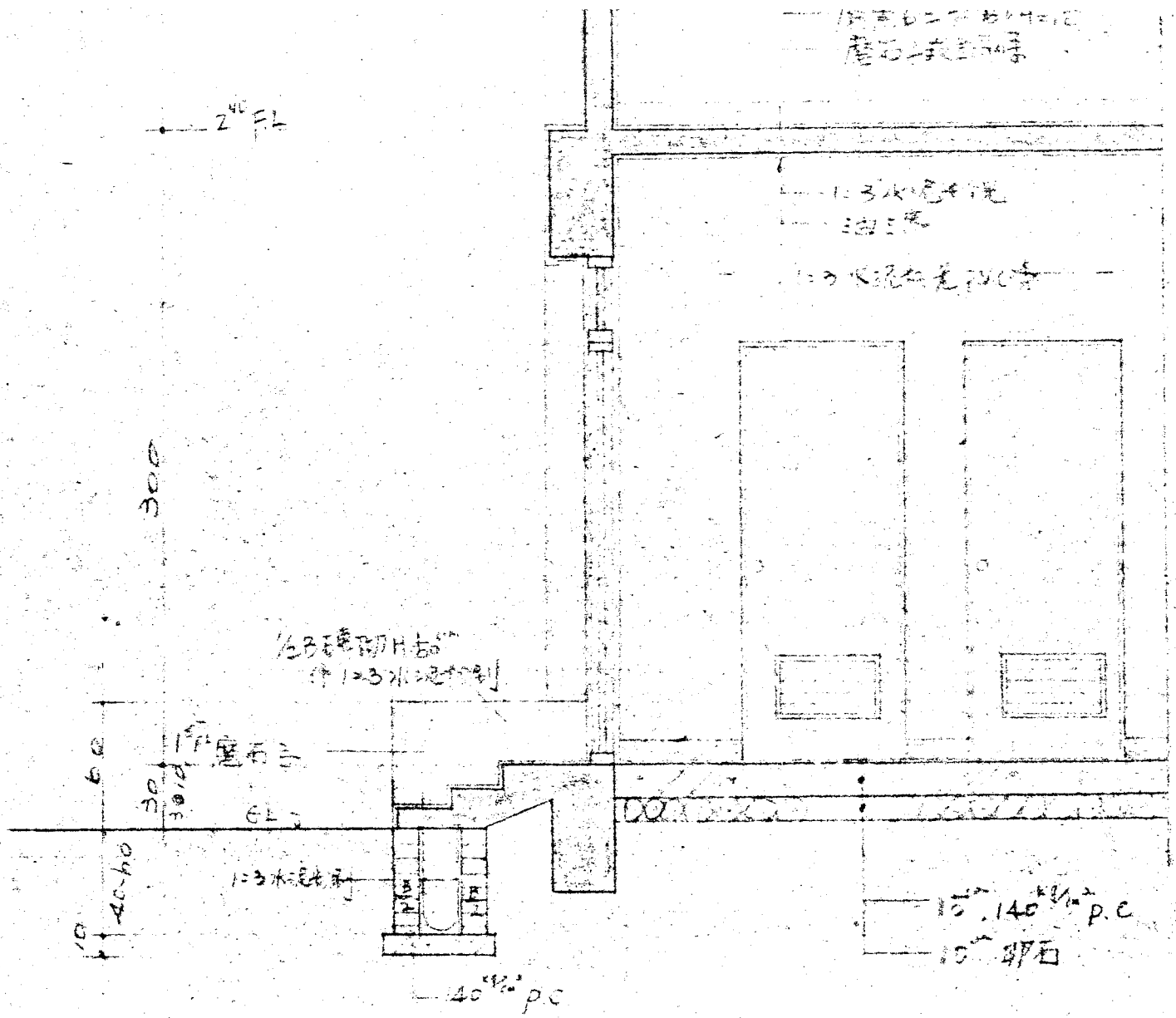
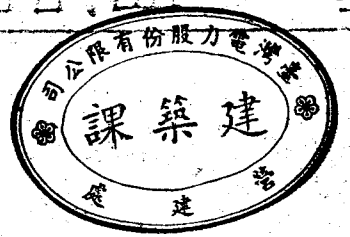


壹樓平面大樣 S=1/30



A-A 外牆剖面 S=1/30



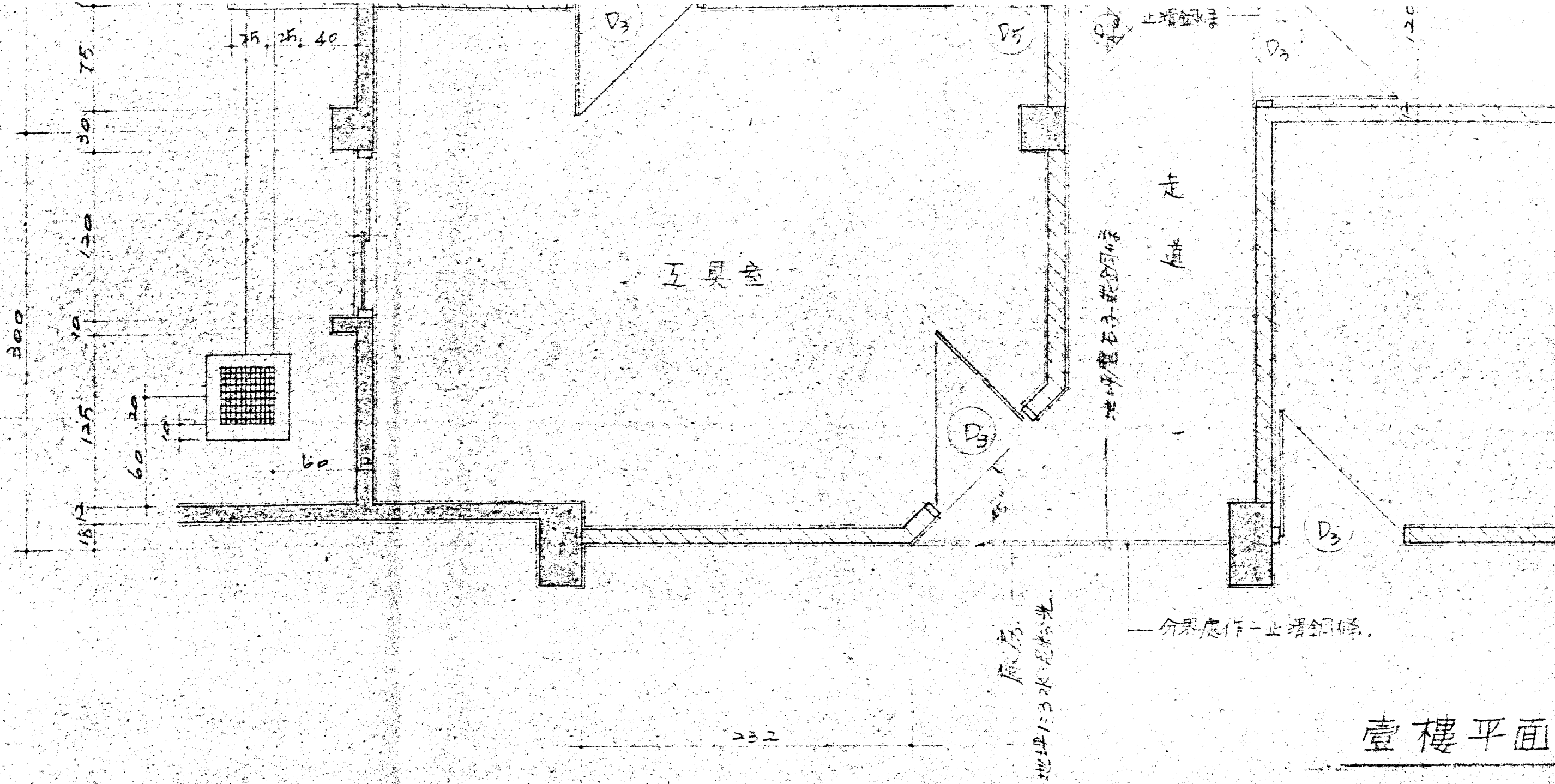
林同棧工程顧問股份有限公司
T. Y. LIN, TAIWAN, INCORPORATED
 STRUCTURAL ENGINEERS
 TAIPEI, TAIWAN, REPUBLIC OF CHINA

DRAWN BY: 湯國成
 DESIGNED BY: 林同棧
 CHECKED BY: 林同棧
 APPROVED BY:

行政院國家科學委員會地熱發電小組
 先導型地熱發電廠新建工程

壹樓平面大樣 A-A 剖面

DRAWING NO. A-
 JOB NO.
 DATE 8/8



壹樓平面

REVISION	DATE	DESCRIPTION	APPROVAL

林同棧工程
T. Y. LIN, TAI
STRU
TAIPEI, TA

500

210

10

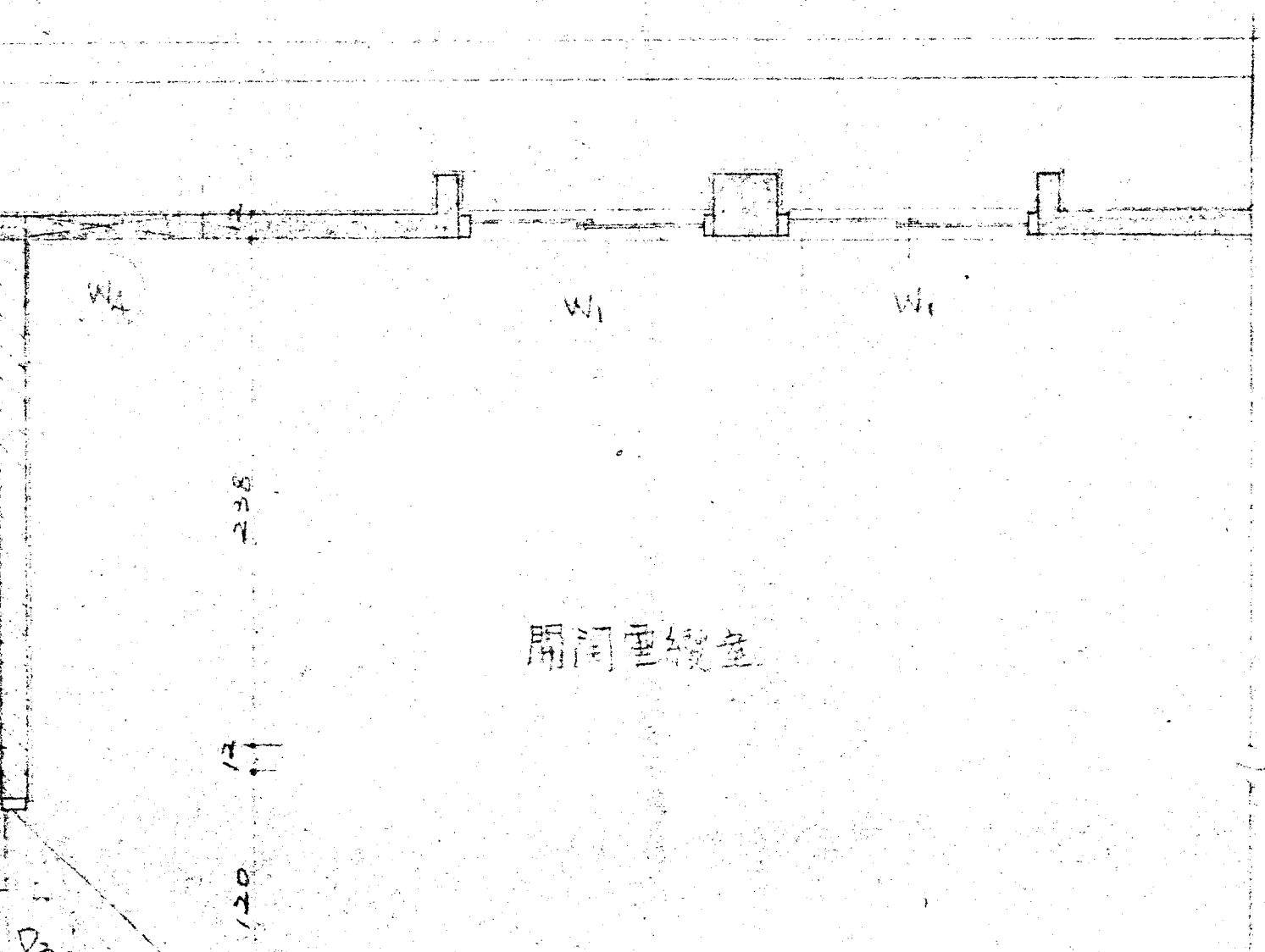
120

30

120

10

2

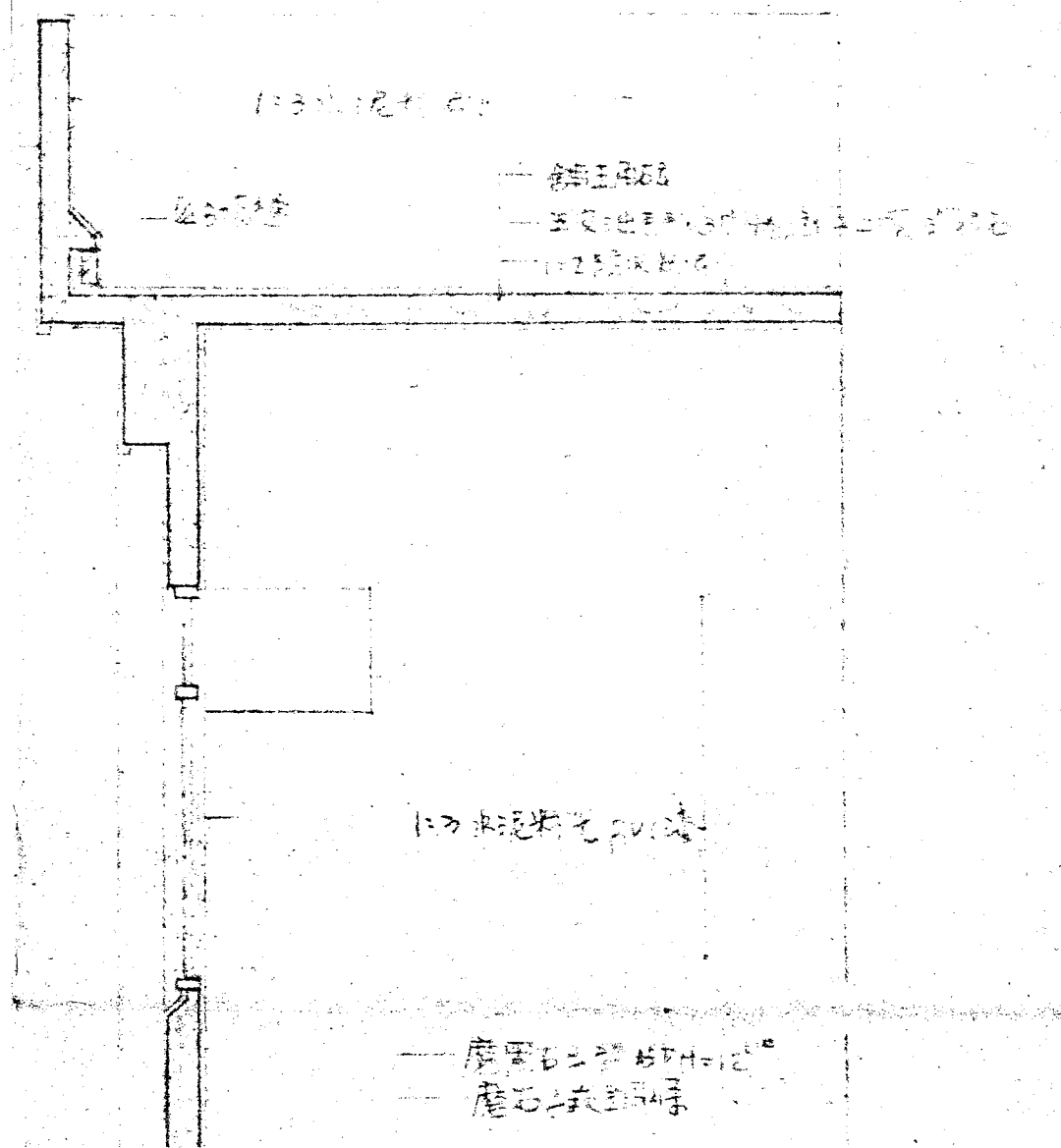


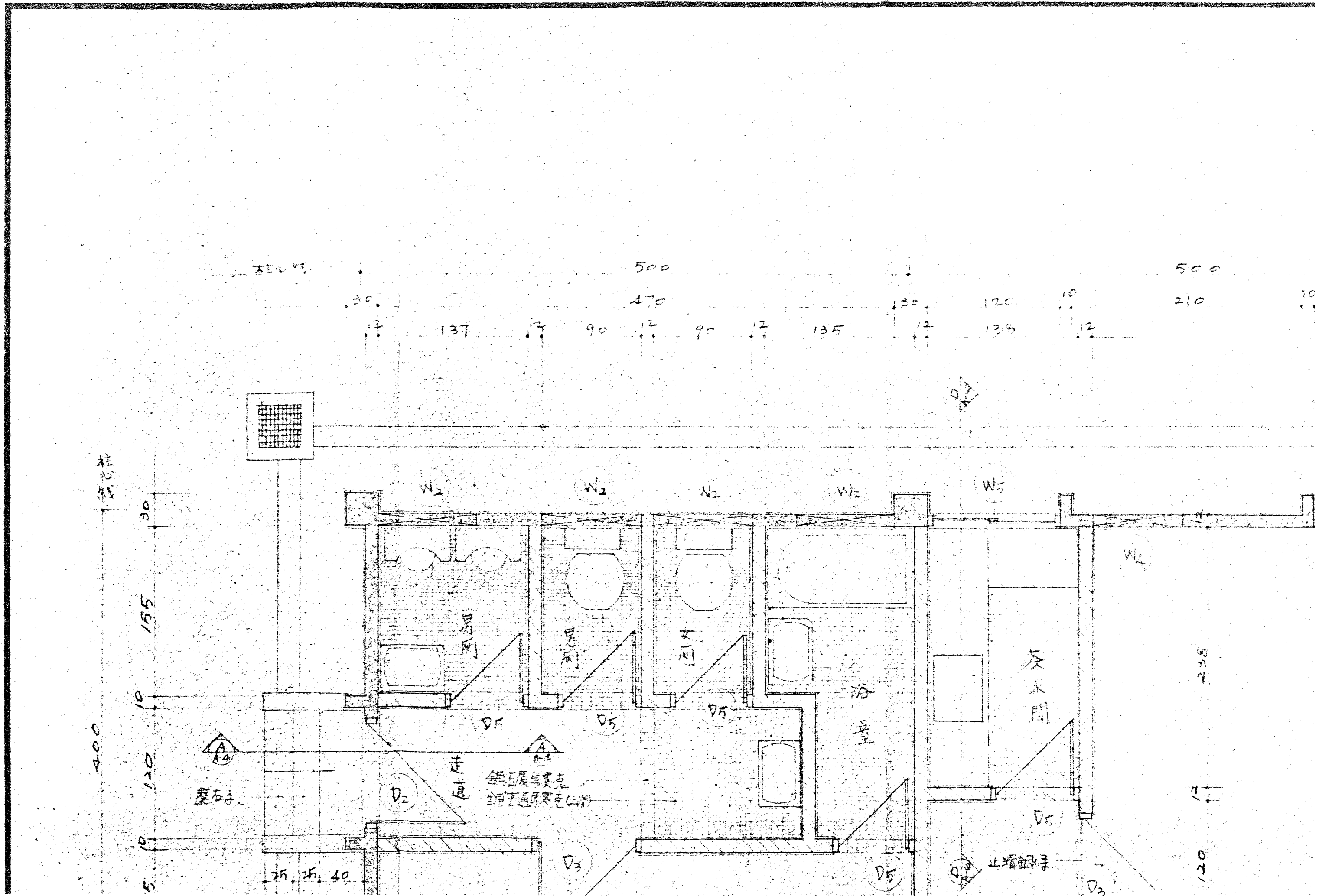
110

泥巴子

330

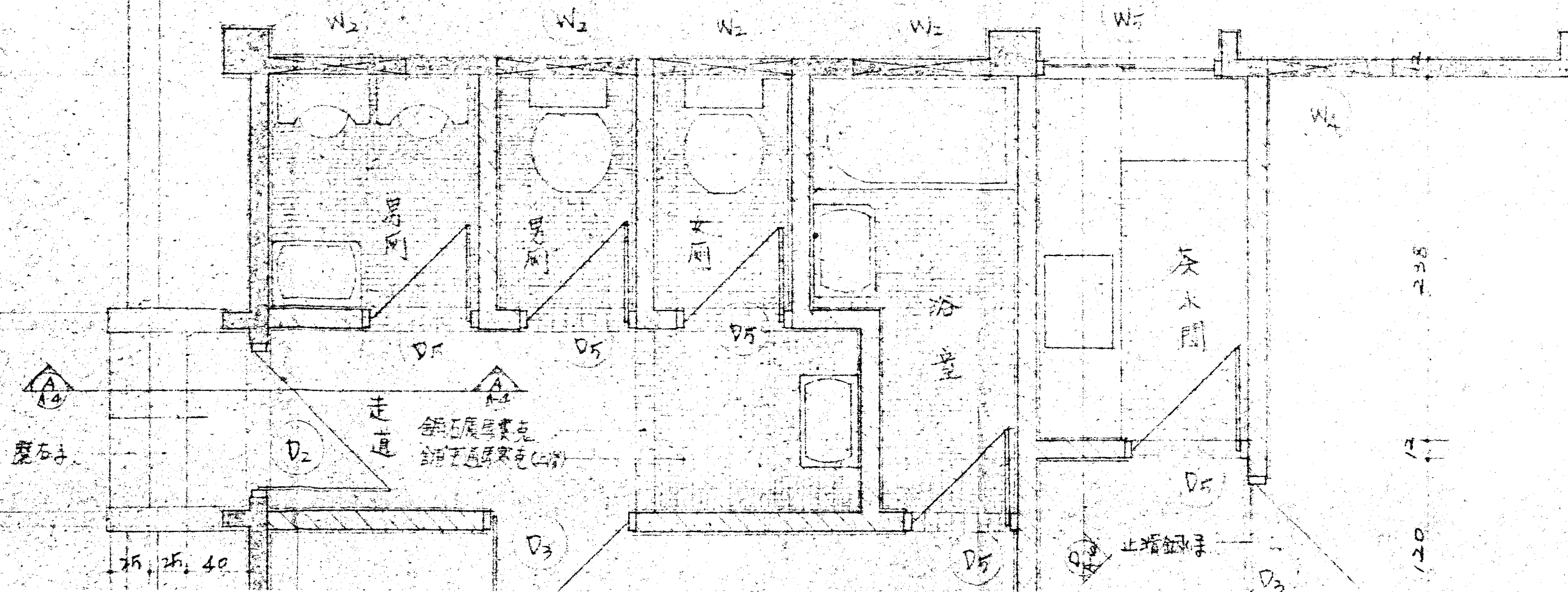
360



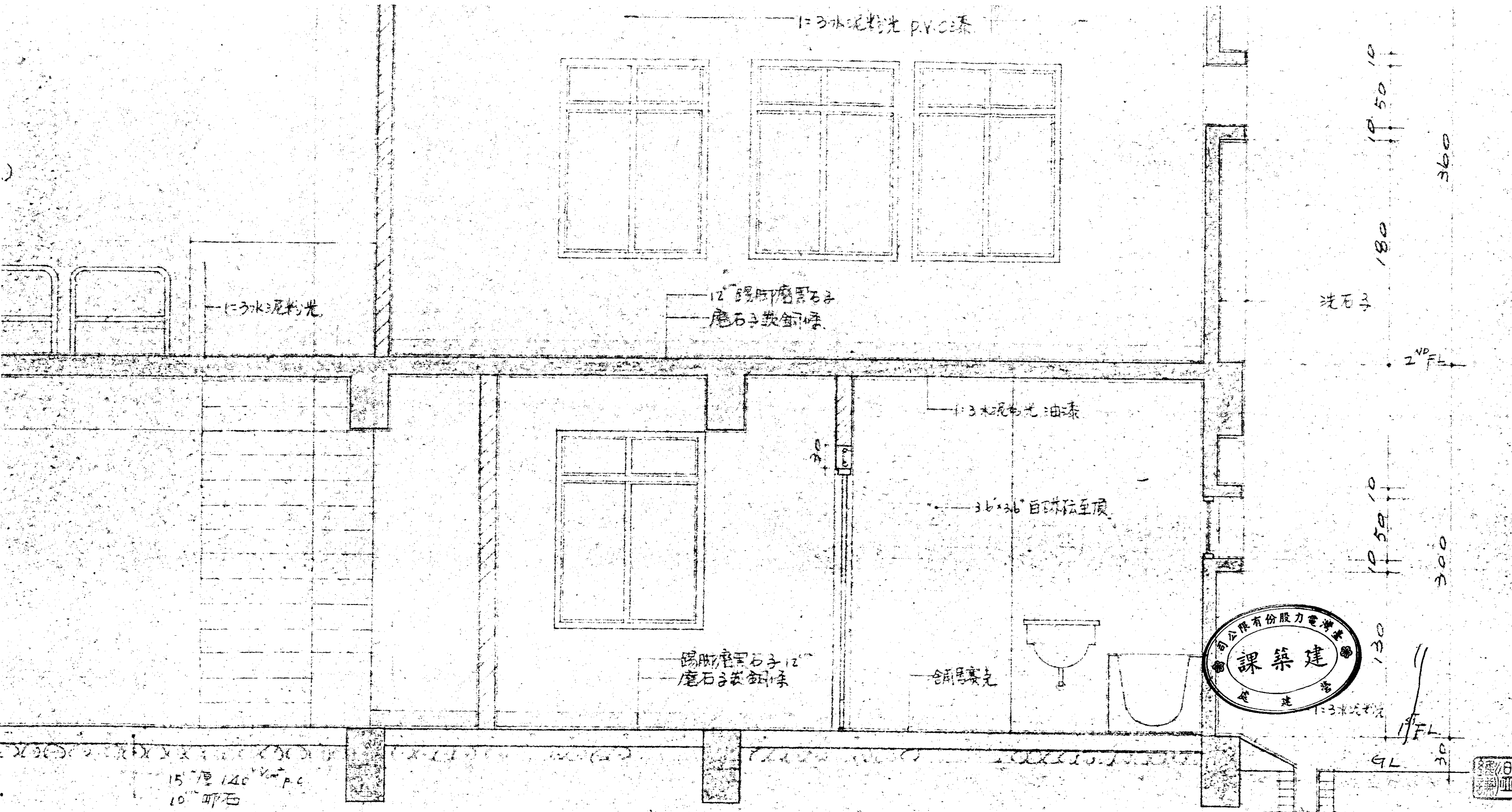


500
30 470 30 120 10 500
17 137 12 90 12 90 12 135 12 138 12 210 10

柱心
400
30
155
10
120
5



238
17
120



林同棧工程顧問股份有限公司
T. Y. LIN, TAIWAN, INCORPORATED

STRUCTURAL ENGINEERS
TAIPEI, TAIWAN, REPUBLIC OF CHINA

DRAWN BY: 溫國順
DESIGNED BY: 李
CHECKED BY: 李
APPROVED BY:

行政院國家科學委員會地熱發電小組
先導型地熱發電廠新建工程

甲-甲剖面

DRAWING NO. A-
JOB NO.
DATE: 55-1-2

1=3 水泥粉光 PVC 漆

鐵捲門 400 (W) x 700 (H)

活動蓋板 (B/A-G)

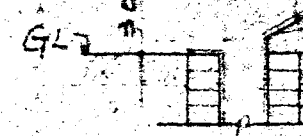
活動欄杆 (不銹鋼管製) 詳 (A/A-G)

360

300

2nd FL

1st FL



1=3 水泥粉光 PVC 漆

1=3 水泥粉刷

1=3 水

15 厚 140
10 卵石

REVISION	DATE	DESCRIPTION	APPROVAL
△	69.1.26	地盤下降, 不銹鋼鐵捲門	

林同棧工程
T. Y. LIN, TAI
STRUC
TAIPEI, TAI

浴室风器(成用器)

剖面图 5.1/30

洗石子

200

1-3 洗石子

19x30

防水混凝土

1-3 水泥粉光

1-2 防水粉光

铺五层砖
 20mm 砂浆
 1-2 防水粉光

洗石子

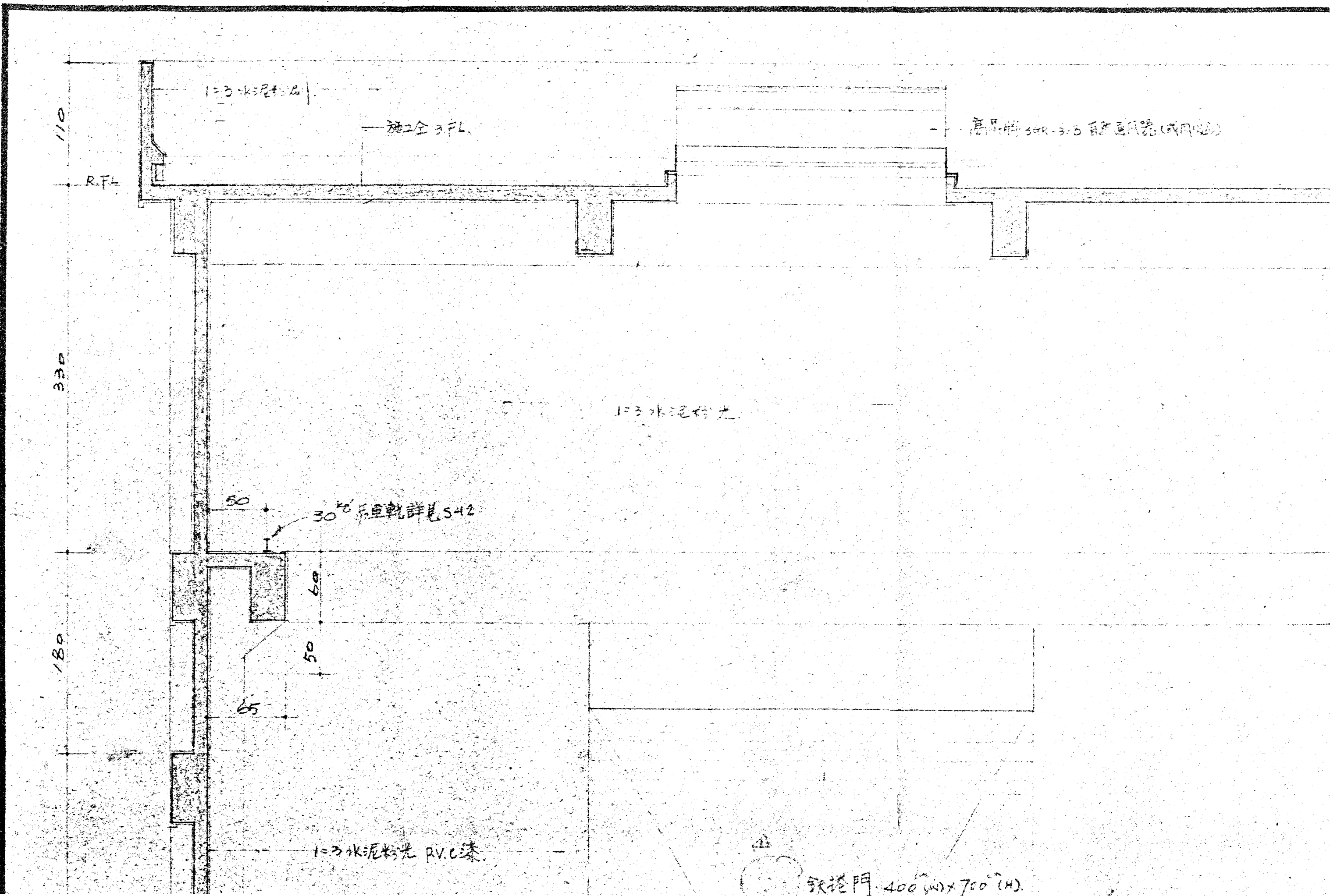
RFL

1-3 水泥粉光 PVC漆

200

110

10



—洗石子(1'厚) (Rough concrete)

—洗石子 (Rough concrete)

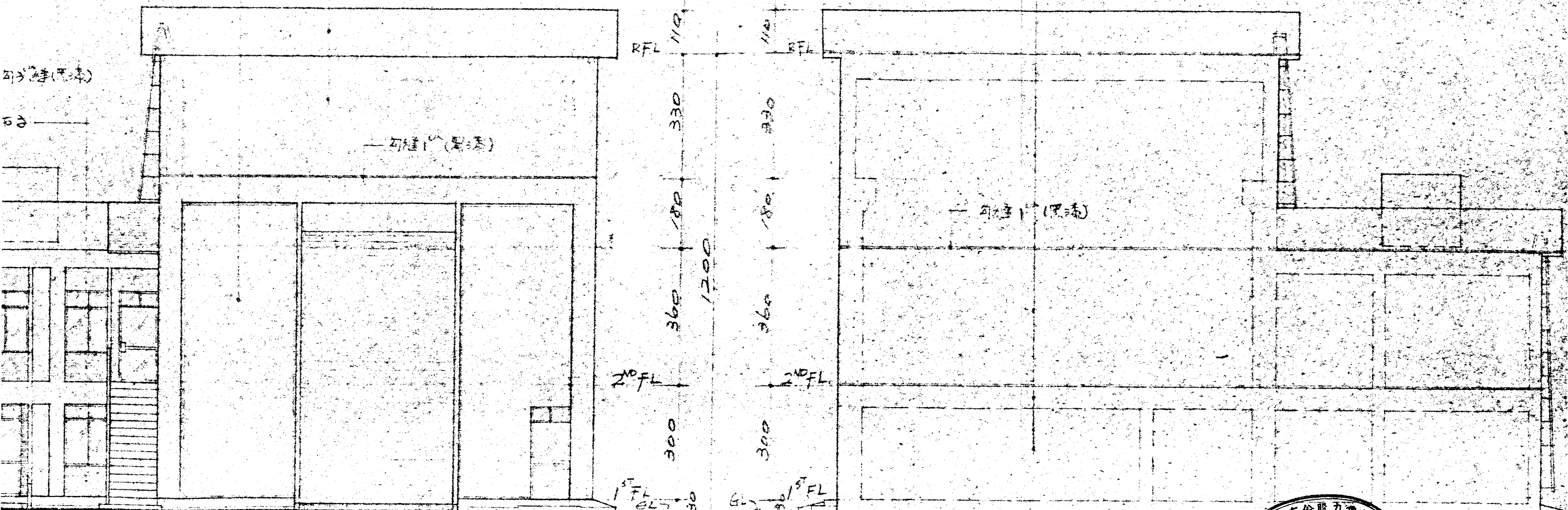
—1:2水泥粉光(1'厚) (1:2 cement plaster)

—洗石子(1'厚) (Rough concrete)

—洗石子 (Rough concrete)

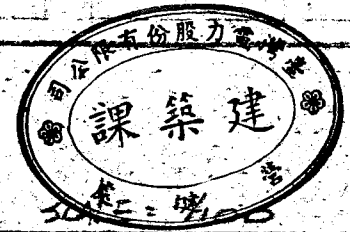
—勾縫(1'厚) (Grout)

—勾縫(1'厚) (Grout)



北向立面圖 SCALE=1/100

南向立面圖



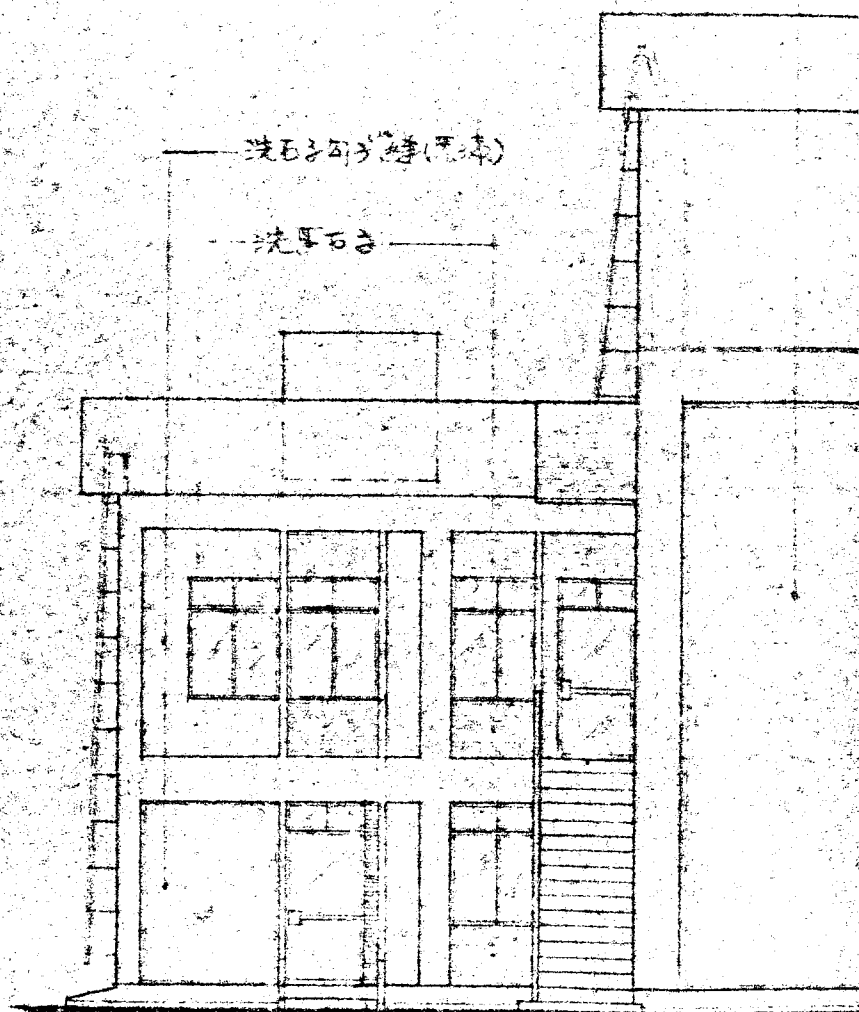
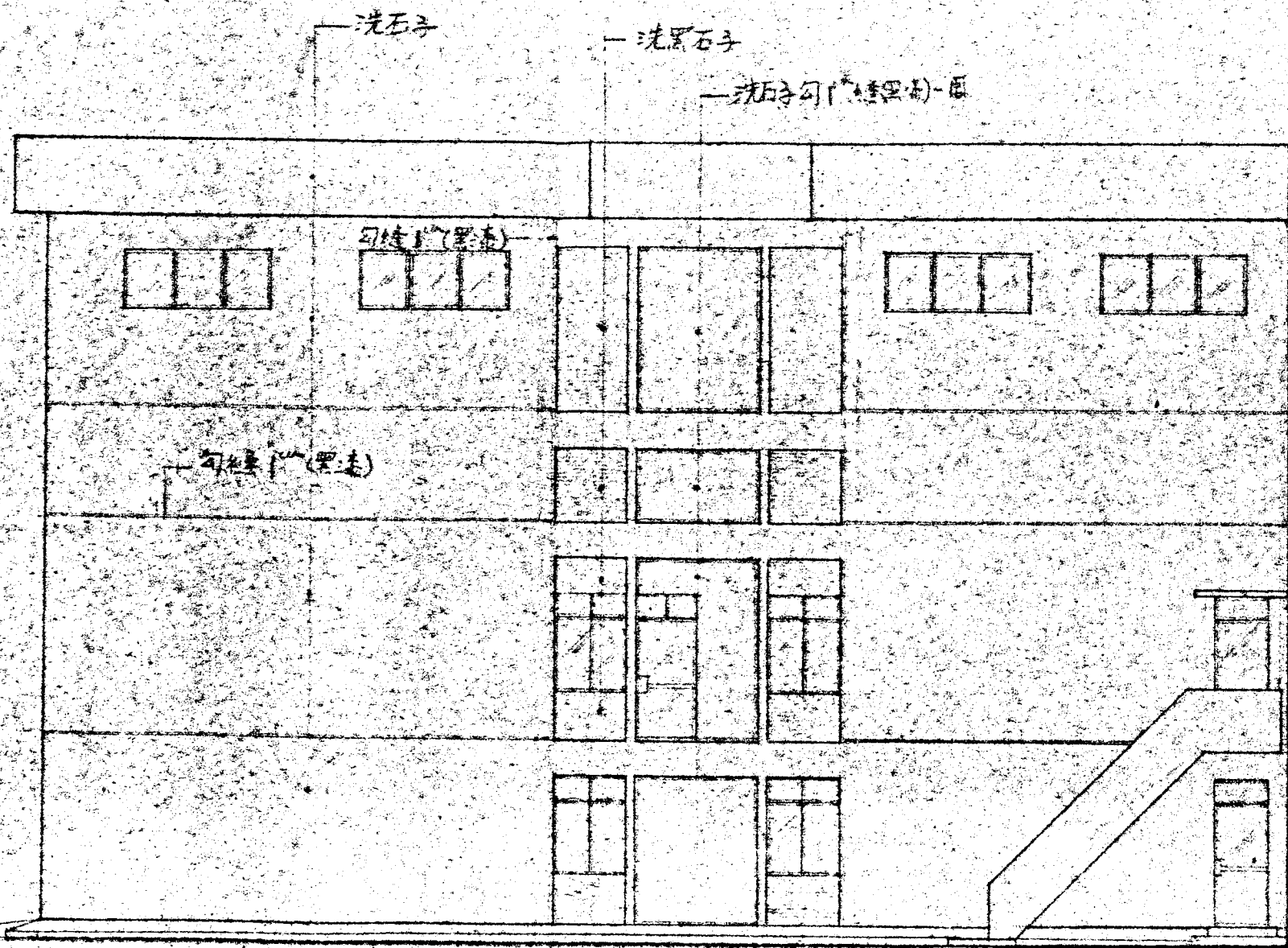
林同棧工程顧問股份有限公司
T. Y. LIN, TAIWAN, INCORPORATED
 STRUCTURAL ENGINEERS
 TAIPEI, TAIWAN, REPUBLIC OF CHINA

DRAWN BY: 林同棧
 DESIGNED BY: 林同棧
 CHECKED BY: 林同棧
 APPROVED BY:

行政院國家科學委員會地熱發電小組
 先導型地熱發電廠新建工程

各向立面及屋頂平面

DRAWING NO.
A-2
 KTB NO.
 DATE: 1978

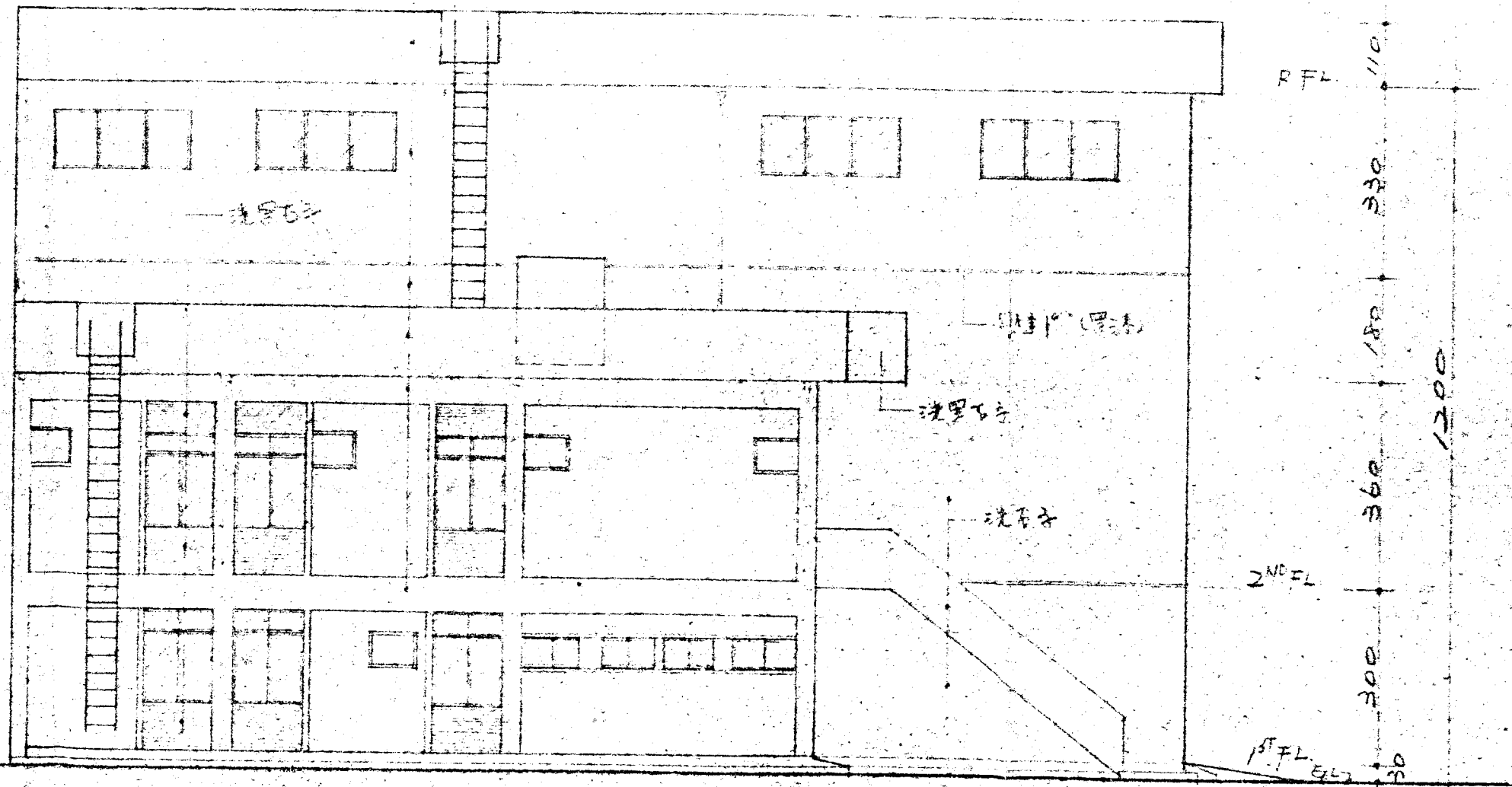


西向立面圖 SCALE: 1/100

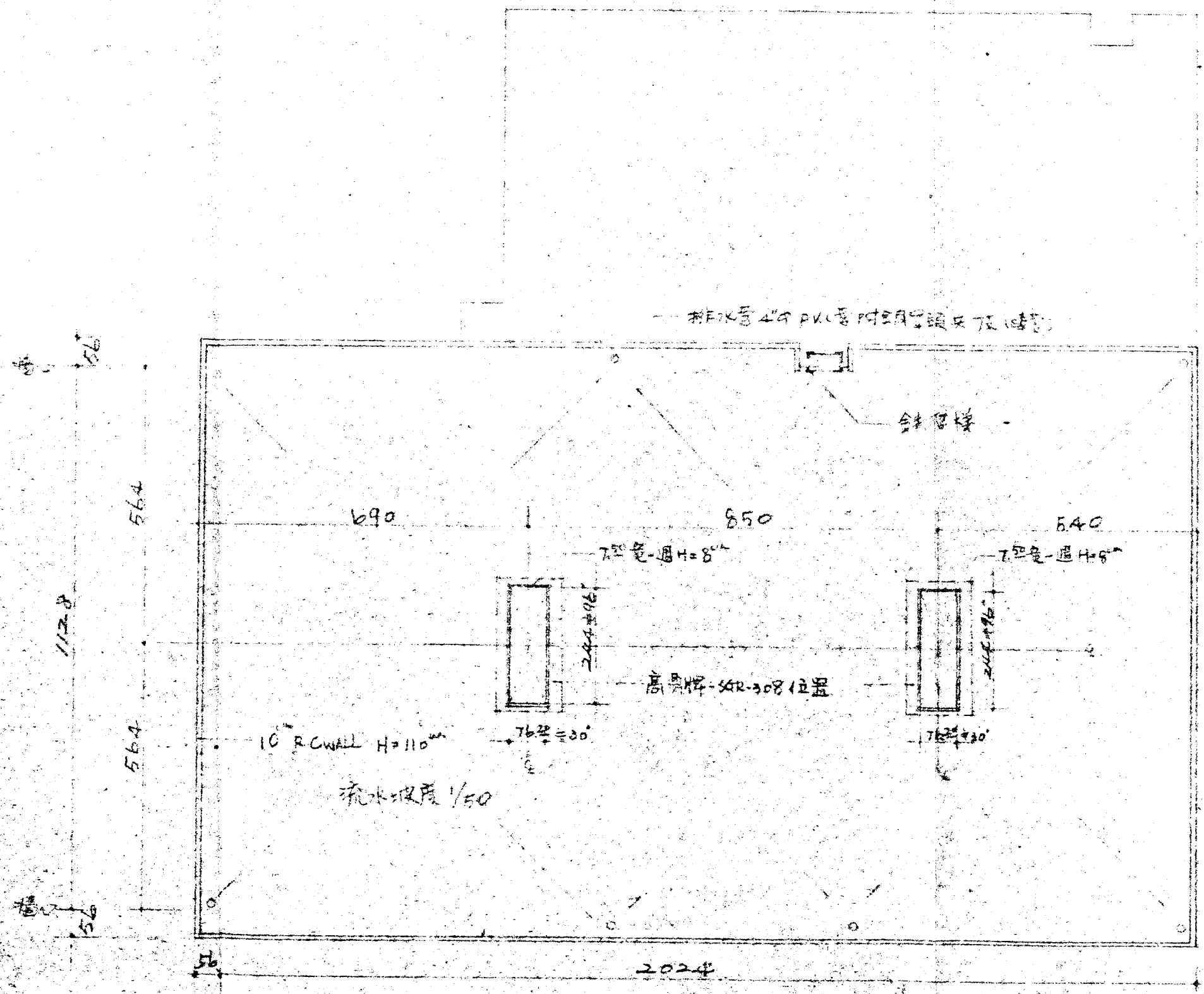
北向

REVISION	DATE	DESCRIPTION	APPROVAL

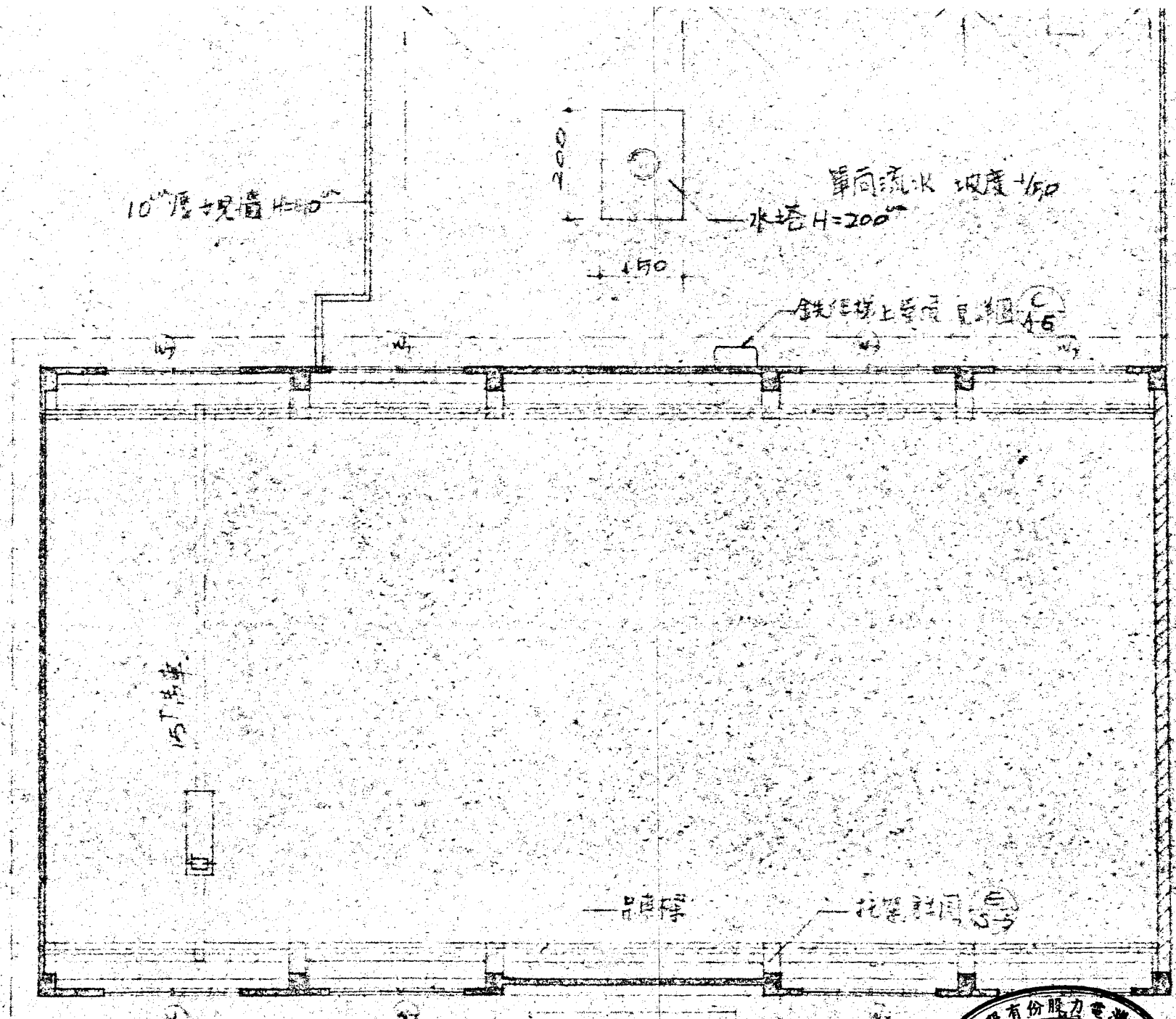
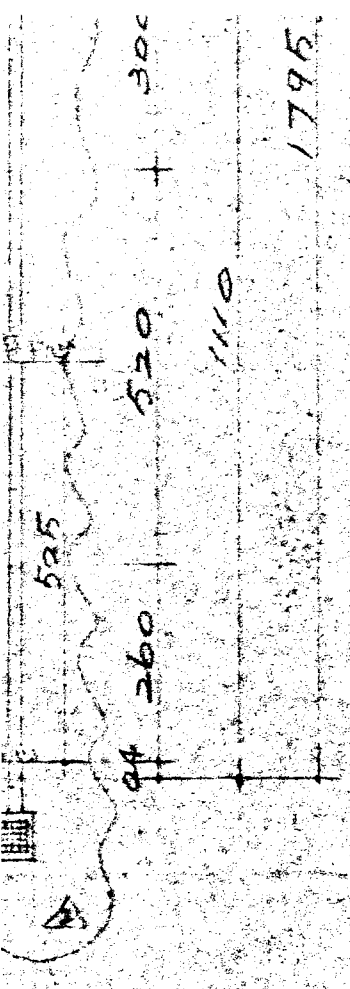
林同棧工程
T.Y. LIN, TAIW
STRUC
TAIPEI, TAIW



東向立面圖 scale: 1/100

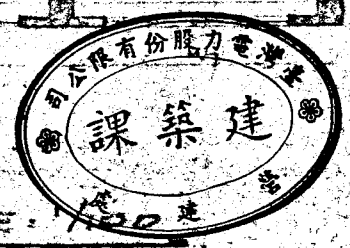


屋頂平面圖 SCALE: 1/100



後面或樓屋頂平面圖

SCALE: 1/200

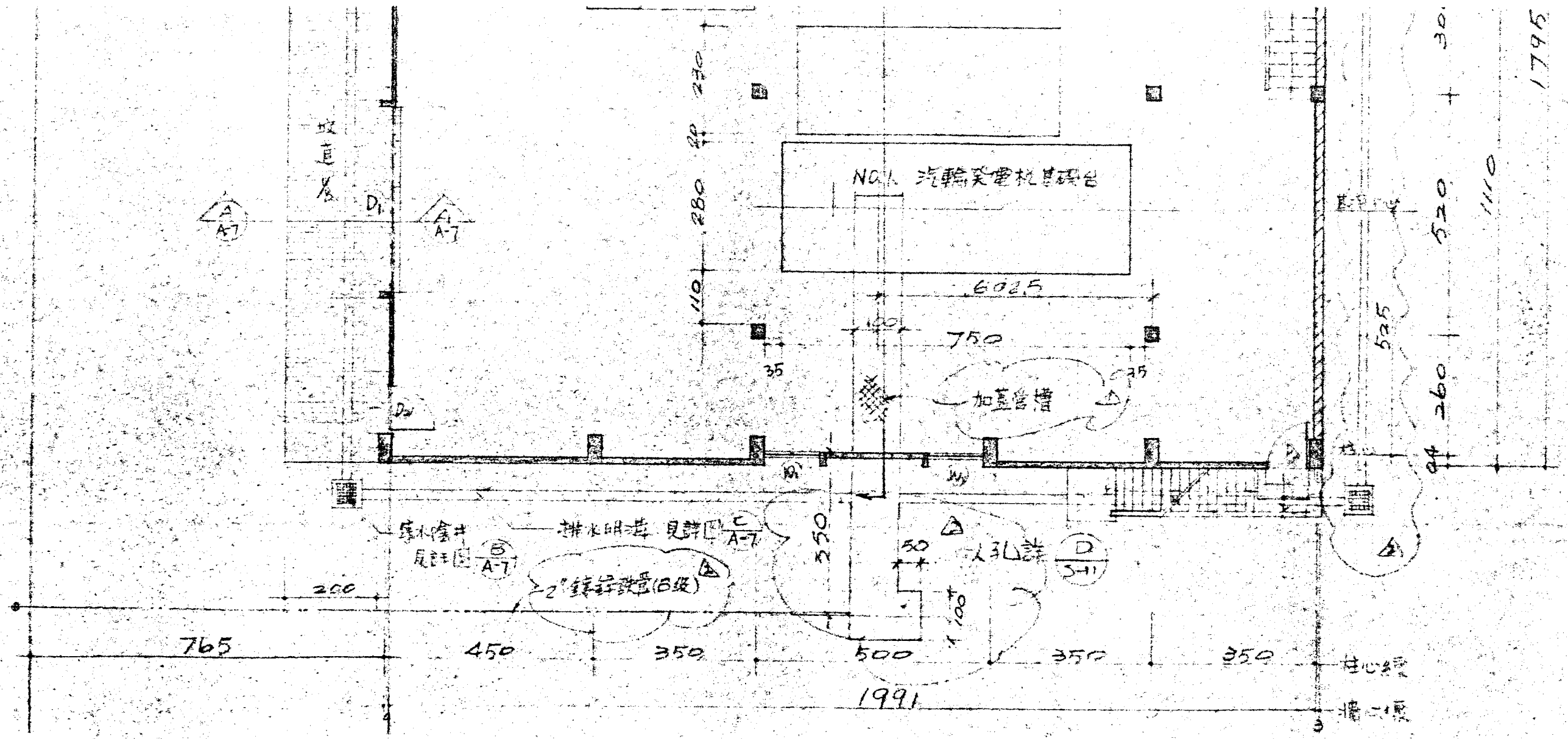


林同棧工程顧問股份有限公司
 T. Y. LIN, TAIWAN, INCORPORATED
 STRUCTURAL ENGINEERS
 TAIPEI, TAIWAN, REPUBLIC OF CHINA

DRAWN BY: 溫同棧
 DESIGNED BY: 溫同棧
 CHECKED BY: 溫同棧
 APPROVED BY:

行政院國家科學委員會地熱發電小組
 先導型地熱發電廠新建工程
 壹樓至肆樓平面

DRAWING NO. A-1
 JOB NO.
 DATE 89. 1. 2

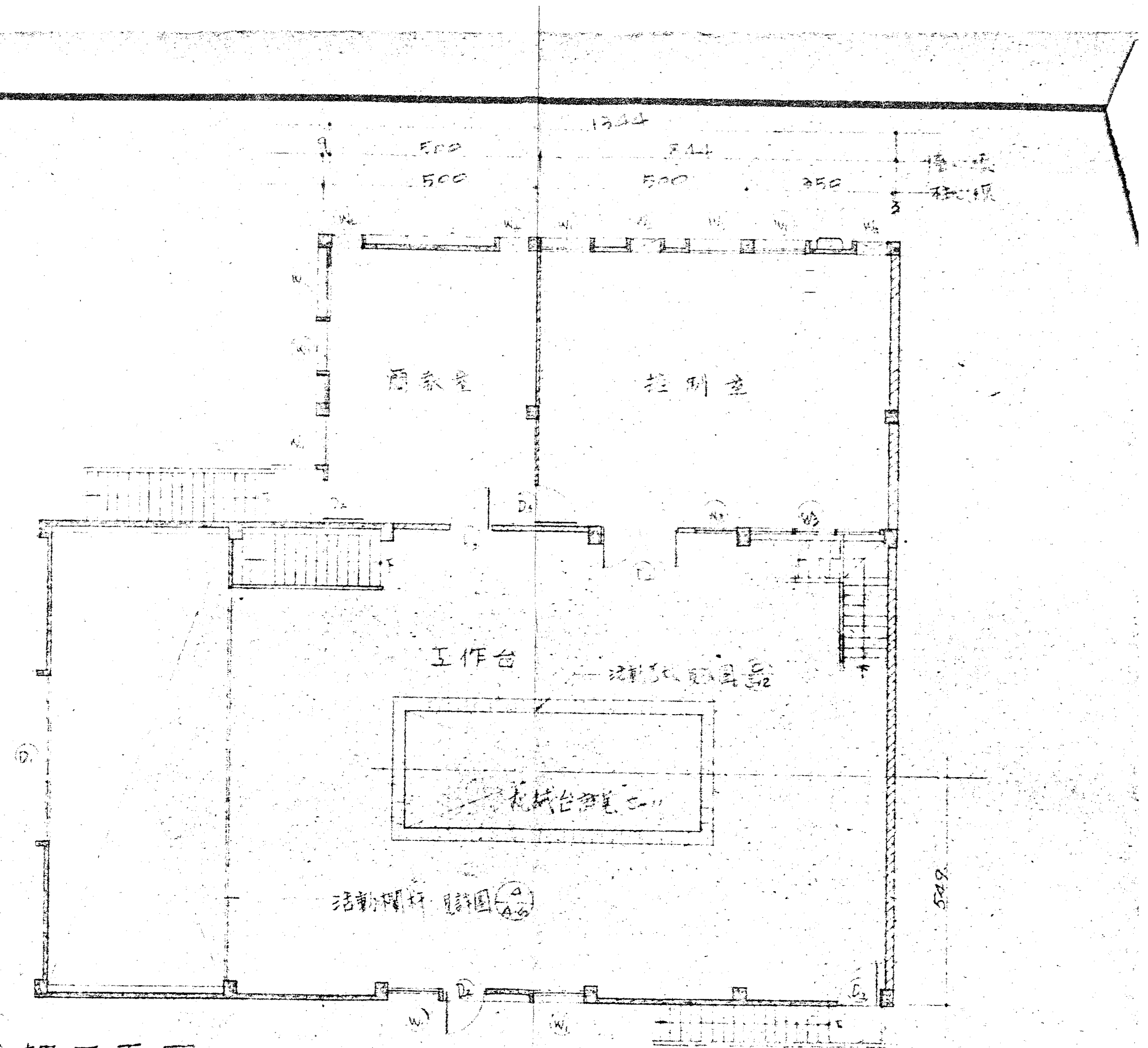
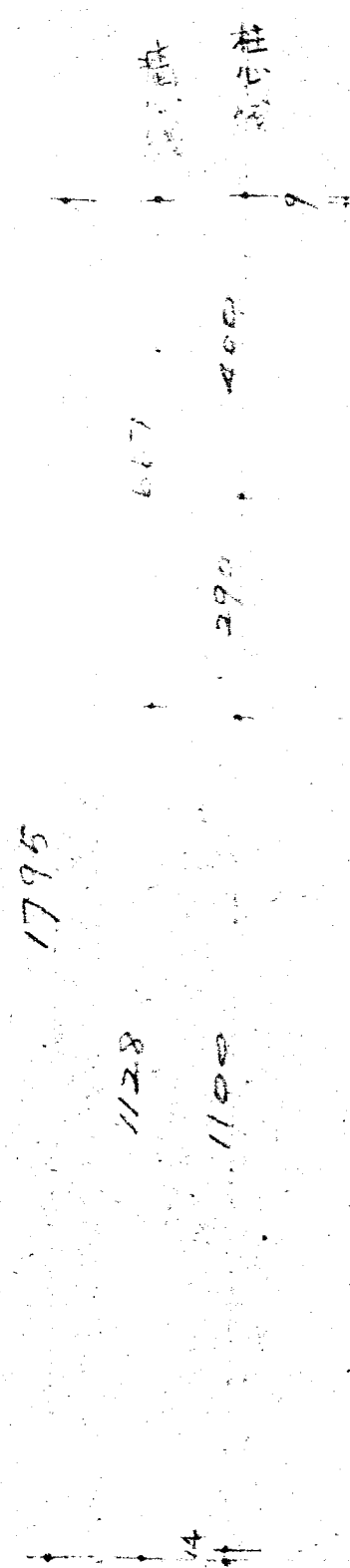
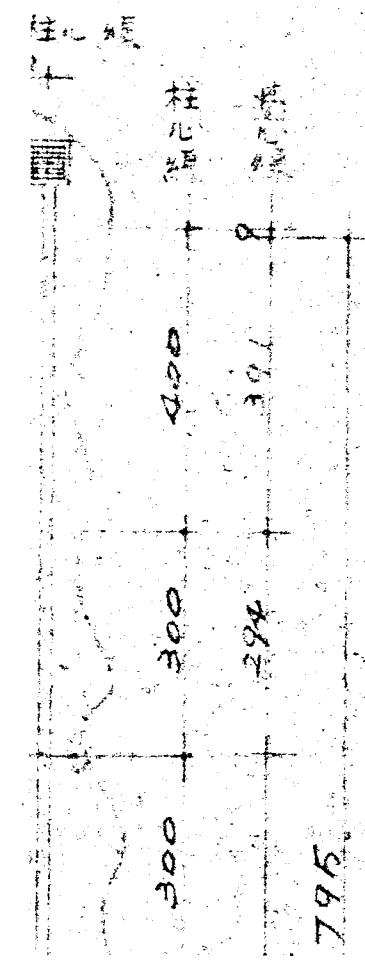


壹樓平面圖 SCALE: 1/100

REVISION	DATE	DESCRIPTION	APPROVAL
△	89.1.20	加蓋管槽	
△	89.2.5	加排水管, 人孔, 排水溝	

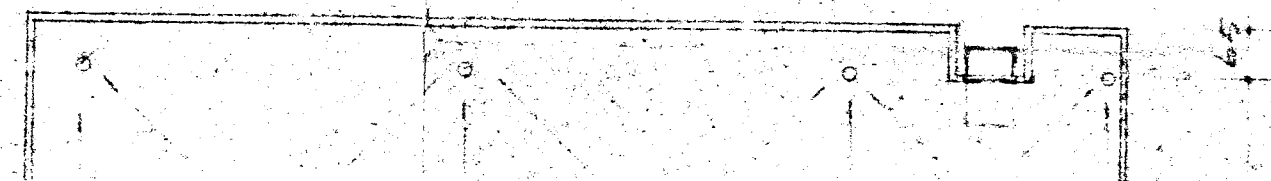
林同棧工程
T. Y. LIN, TAIW
STRUC
TAIPEI, TAIW

1795



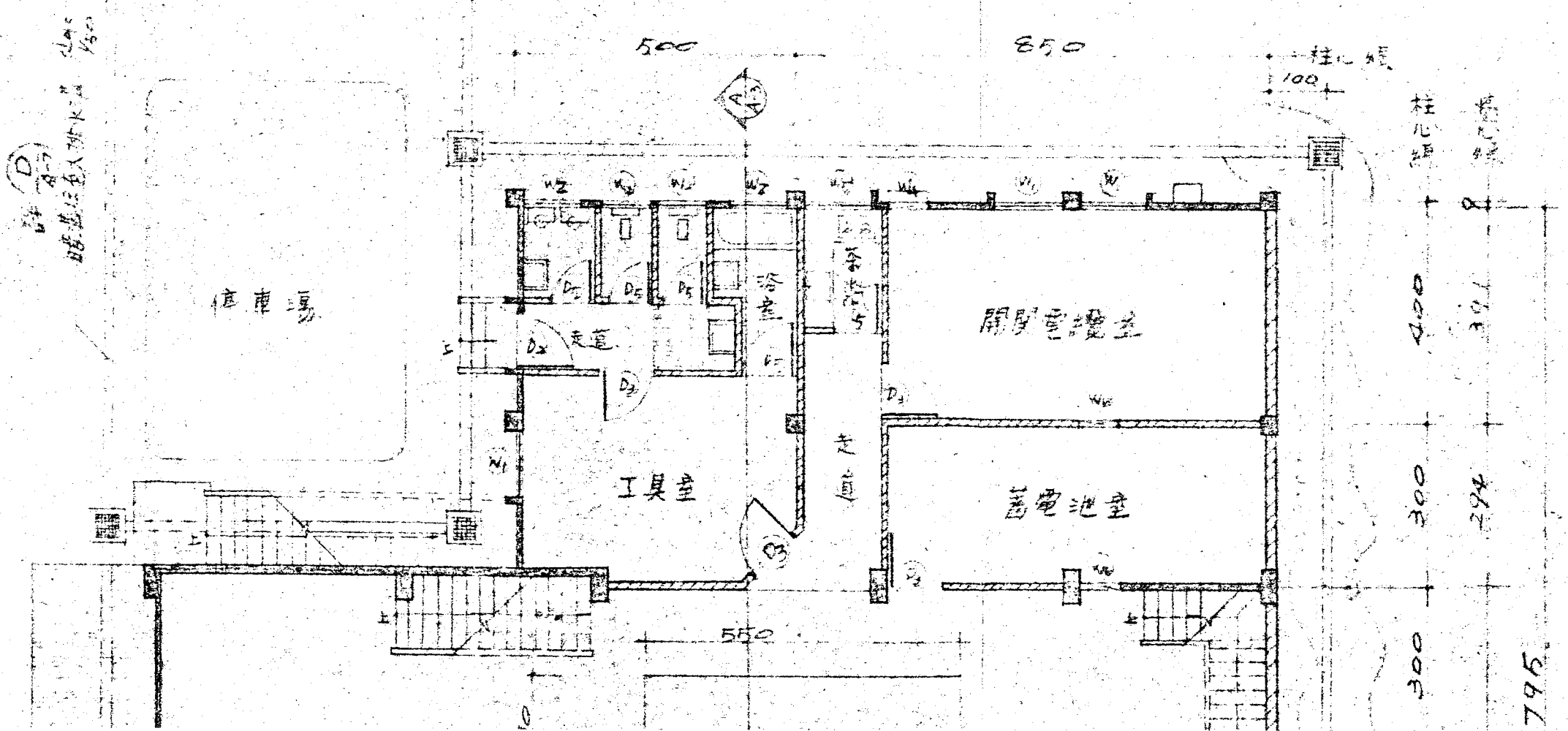
貳樓平面圖 SCALE: 1/100

4寸 PVC 管 7.5 公分 的 燈 罩

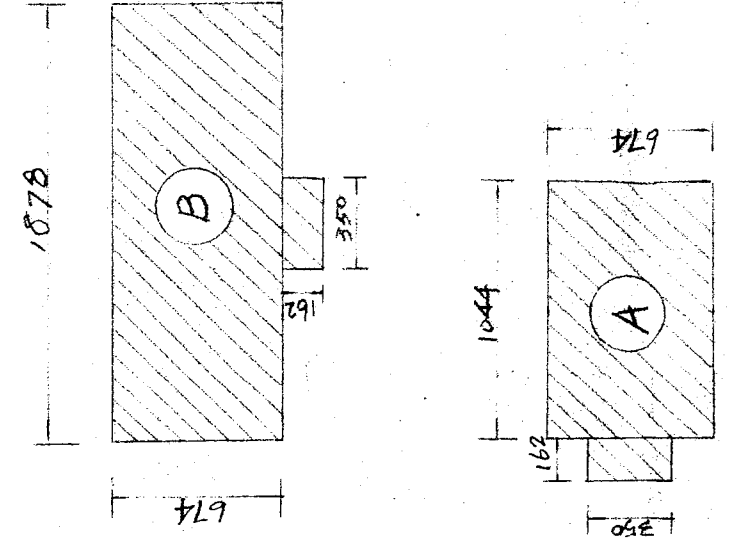


夏后壳基研台

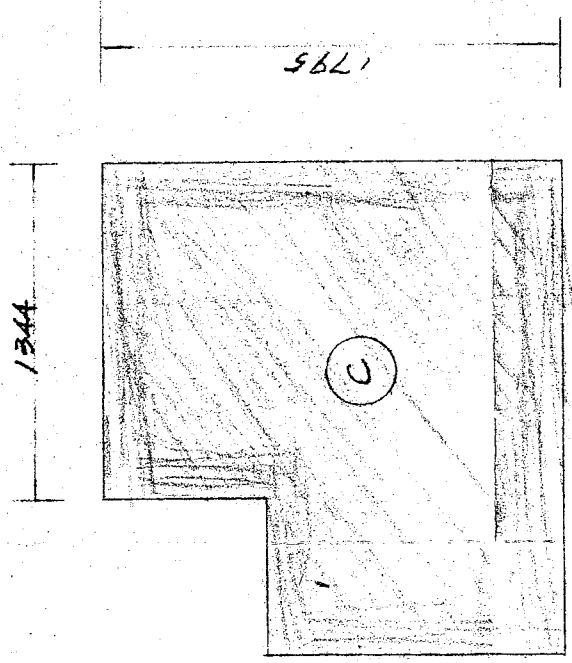
現有大排水溝



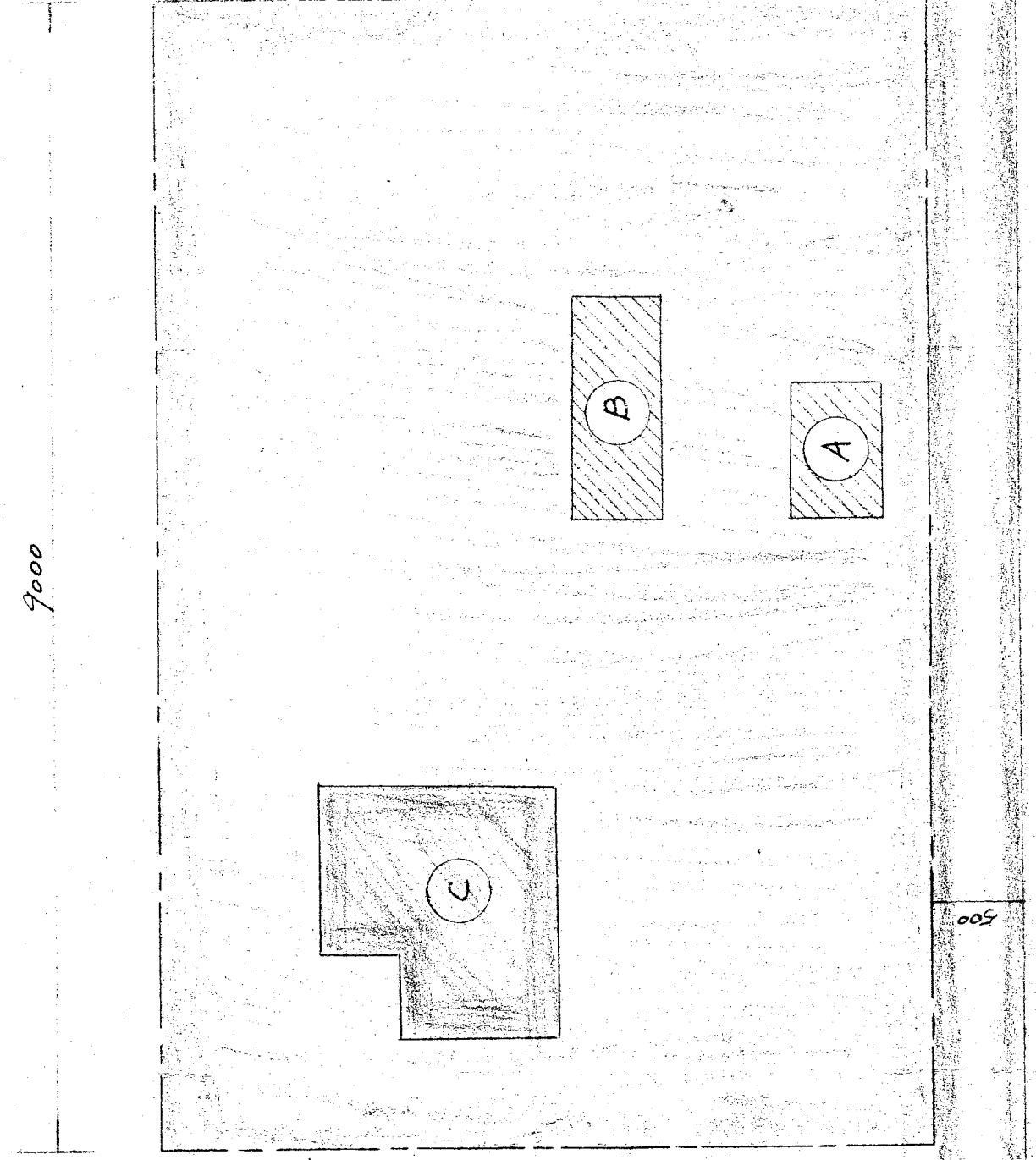
A B C D E F G H



現有房屋平面圖 1/500



新建房屋平面圖 1/500



配置圖及基地面積計算圖 1/500

1 2 3 4 5 6 7 8 9 10

1

2

3

4

5

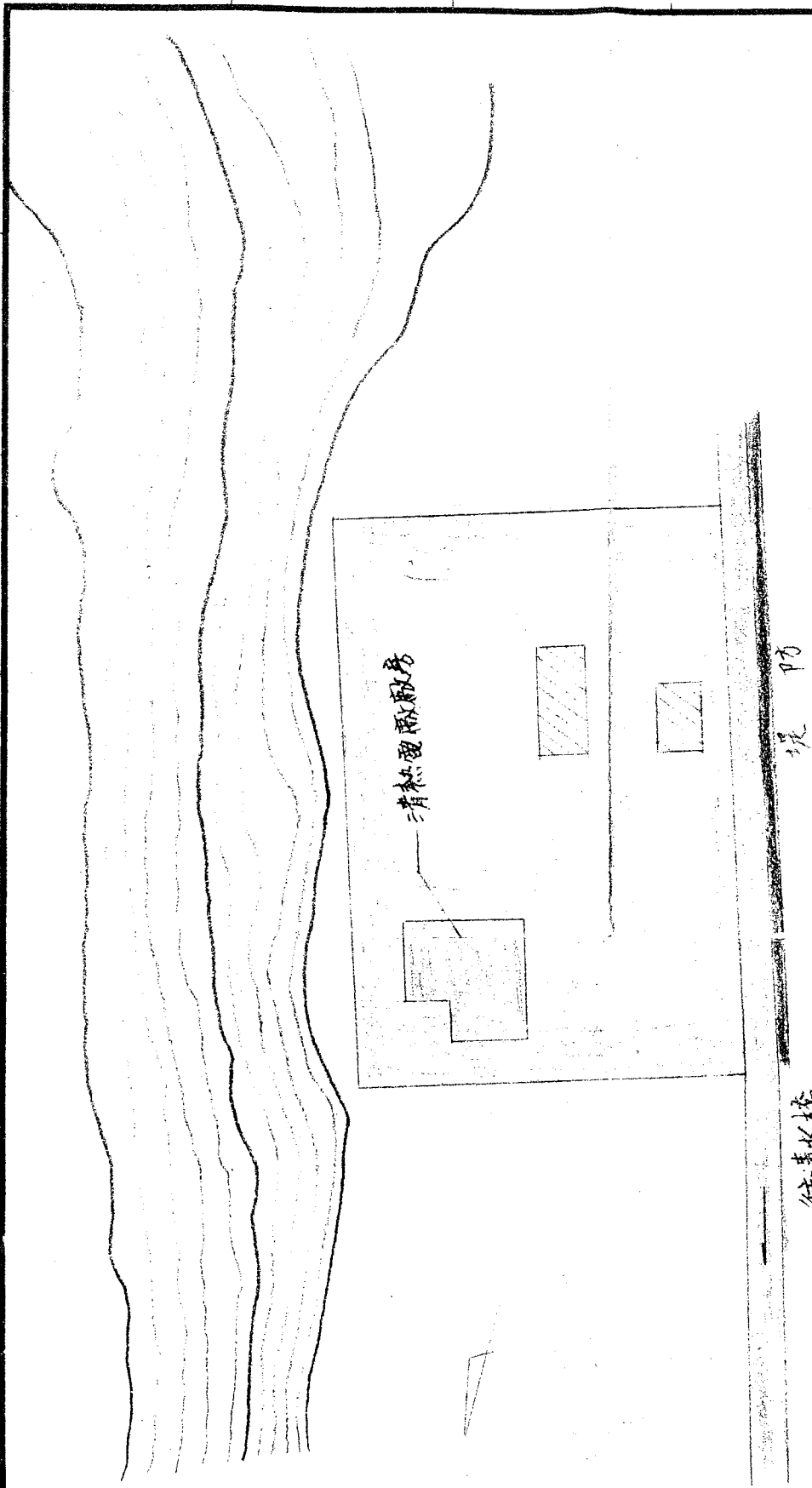
6

7

8

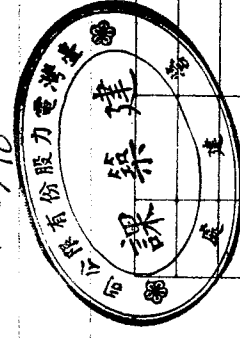
9

10



位置圖 1/1000

面積名稱	計算式
基地面積	$60.00 \times 90.00 = 5400 \text{ m}^2$
原有房屋面積	(A) $10.44 \times 6.74 + 1.62 \times 3.50 = 76.04 \text{ m}^2$
	(B) $18.78 \times 6.75 + 1.62 \times 3.50 = 132.34 \text{ m}^2$
新建房屋樓地 板面積	(C) 一樓 $17.95 \times 13.44 + 11.28 \times (19.91 - 13.44) = 314.23 \text{ m}^2$
	二樓 $17.95 \times 13.44 + 11.28 \times (19.91 - 13.44) = 314.23 \text{ m}^2$
新建建築面積	314.23 m ²
建築面積	$76.04 + 132.34 + 314.23 = 522.61 \text{ m}^2$
法定空地	$5400 \times 0.5 = 2700 \text{ m}^2$
遮蔽率	$522.61 \text{ m}^2 \div 5400 \text{ m}^2 = 0.968/10$
工程造價	



圖例

- 建築基地
- 新建房屋屋
- 原有房屋
- 現有道路
- 界線

次數	日期	修改內容	修改	校核	批准

蘭陽發電廠

清熱分廠發電廠房新建基地計算

台灣電力公司

設計 _____ 會核 _____

製圖 _____ 審定 _____

校核 _____ 批准 _____

共 頁