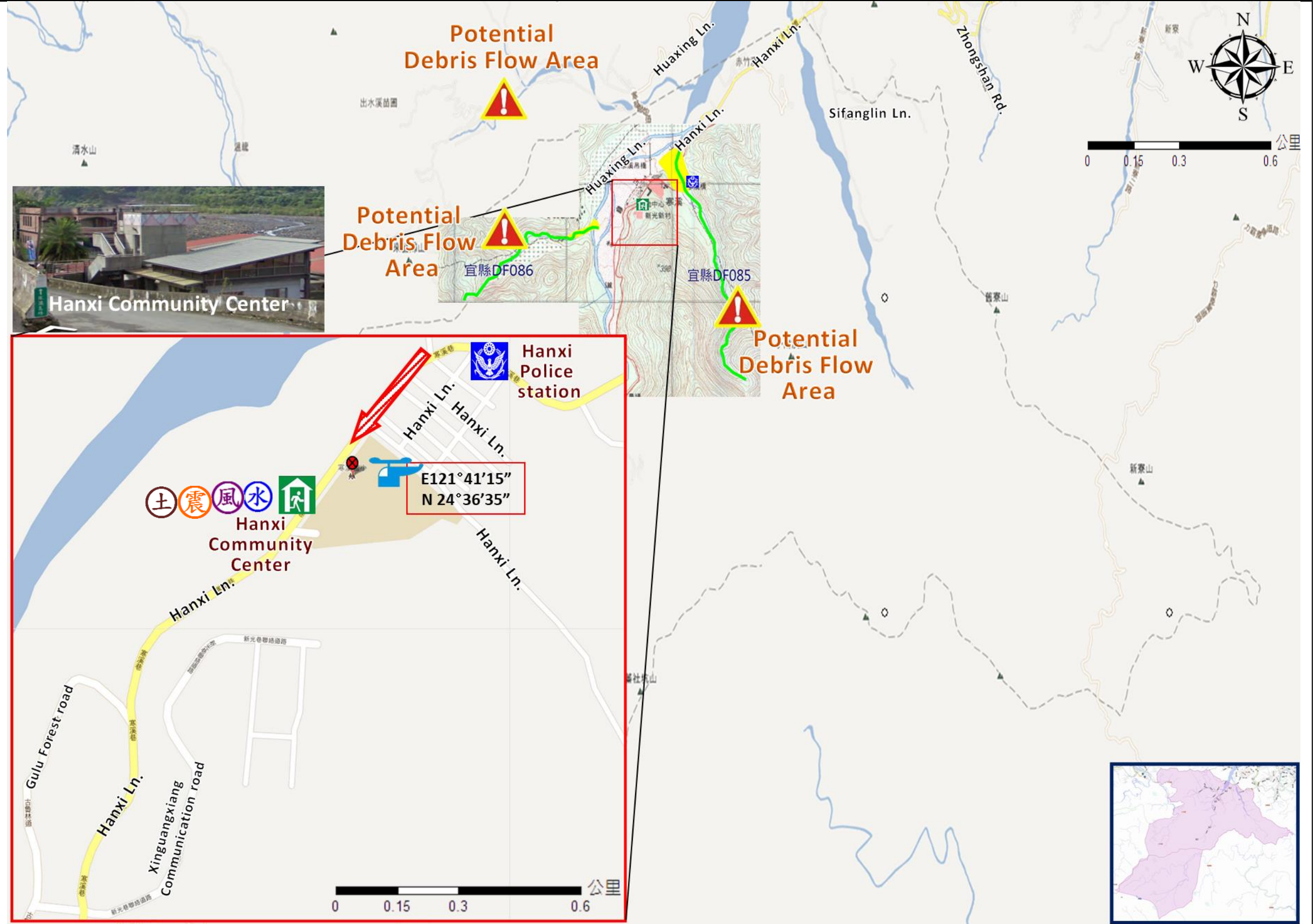


Hanxi Village Evacuation Route

DPR Info. List
Hanxi Vil. Info.
Population: 1,154
Disaster Response Unit
1. Datong Emergency Operation Center Tel: 03-9802260
2. Chief of Village 董經國 DONG JING GUO Tell:0986-280005
3. Hanxi Police station Tel: 03-9517465
4. Datong Fire Branch Tel: 03-9801123
5. Police 110, FD 119
6. Road Department Tel: 03-9809601

DPR Info.
1. Agency of Rural Development & Soil and Water Conservation, MOA https://www.ardswc.gov.tw/Home/
2. Water Resources Agency, MOEA http://www.wra.gov.tw/
3. Central Weather Administration https://www.cwa.gov.tw/V8/C/
4. Yilan County FD http://fire.e-land.gov.tw/
5. Datong Township Office http://www.datong.e-land.gov.tw

Shelters
Hanxi Community Center Area: 309square meters Cap.: 30ppl. Addr.: 5, Hanxi Ln. Contact: 陳枝榮 CHEN ZHI RONG Tel: 03-9801004#113



Made by Yilan County Fire Dep.
Datong Township Office
March, 2024

Legends	Disaster relevant			Facility		
	Evac. Direction	Disaster warning sign spot	Indoor Shelter	Disaster category	Police station	Helicopter Landing Zone (WGS84)