
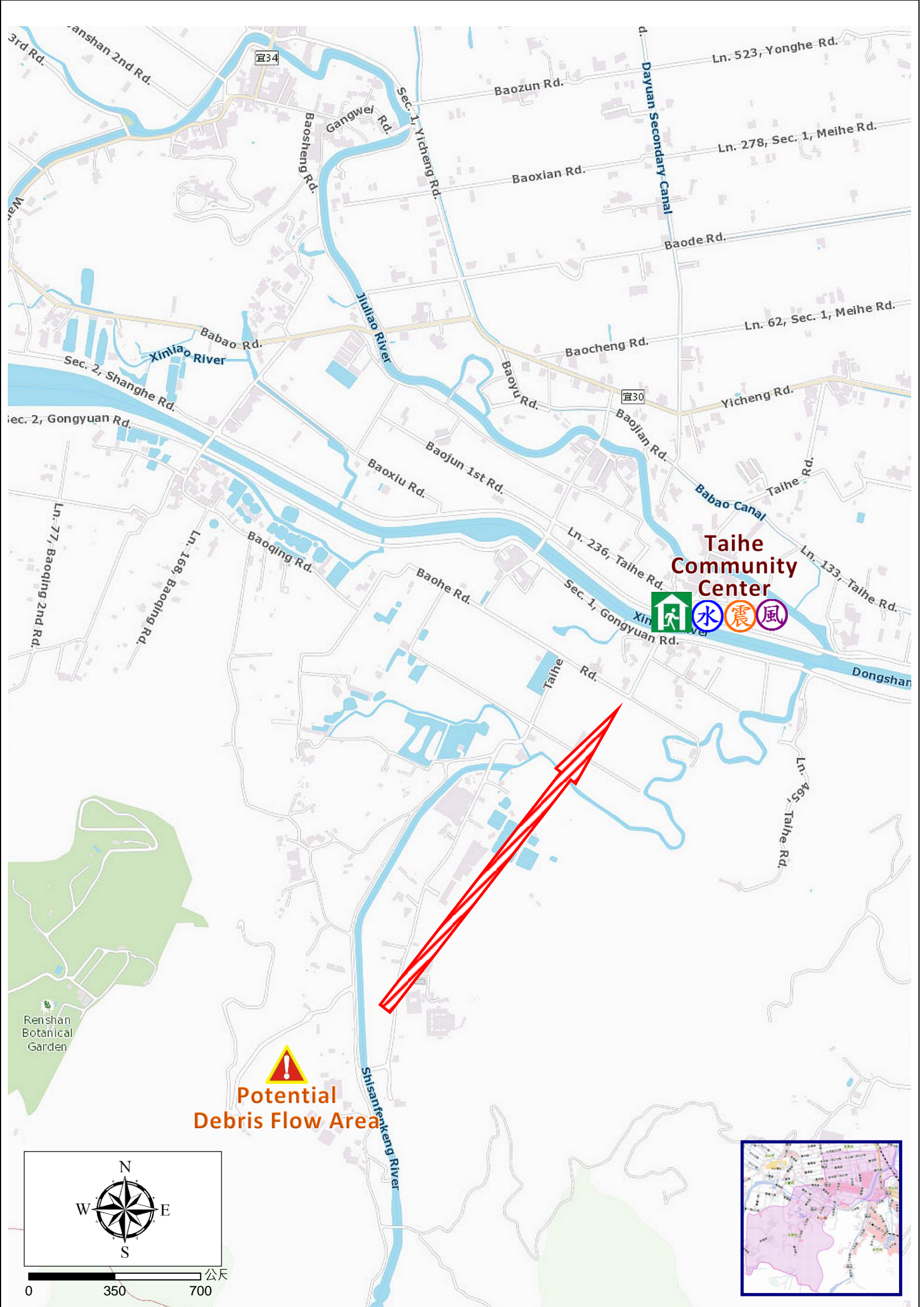






Taihe Village Evacuation Route

No.1000208-011

DPR Info. List
Taihe Vil. Info.
Population: 1,732
Disaster Response Unit
<ol style="list-style-type: none"> Dongshan Emergency Operation Center Tel: 03-9591105 Chief of Village 游興昌 YOU XING CHANG Tel: 03-9591489 Cell:0920-356096 Dongshan Police Station Tel: 03-9591651 Dongshan Fire Branch Tel: 03-9593119 Police 110, FD 119 Road Department Tel: 03-9882058
DPR Info.
<ol style="list-style-type: none"> Agency of Rural Development & Soil and Water Conservation, MOA https://www.ardswc.gov.tw/Home/ Water Resources Agency, MOEA http://www.wra.gov.tw/ Central Weather Administration https://www.cwa.gov.tw/V8/C/ Yilan County FD http://fire.e-land.gov.tw/ Dongshan Township Office http://www.dongshan.gov.tw/
Shelters
<p>Taihe Community Center Area: 464square meters Cap.: 98ppl. Addr.: 238, Taihe Rd. Contact: 游興昌 YOU,XING-CHANG Tel: 0920-356096</p> 
<p>Made by Yilan County Fire Dep. Dongshan Township Office March, 2024</p>



Legends	Disaster relevant		Facility	
	 Evac. Direction	 Disaster warning sign spot	 Indoor Shelter	 Disaster category