

Fuxing Village Evacuation Route

No.1000206-005

DPR Info. List

Fuxing Vil. Info.

Population: 1,763

Disaster Response Unit

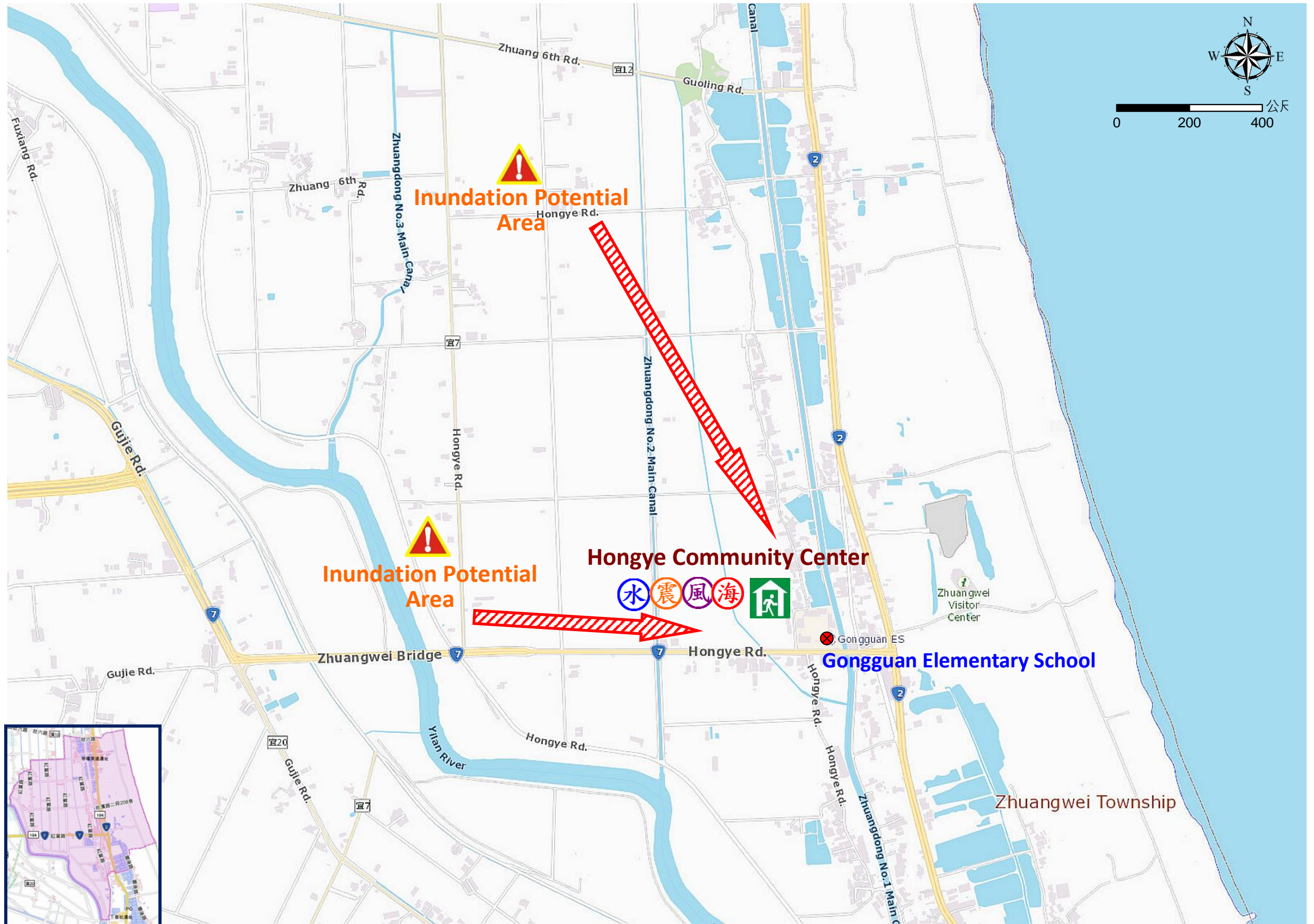
1. Jhuangwei Emergency Operation Center
Tel: 03-9383018
2. Chief of Village 陳秀英
CHEN XIU YING
Cell:0958-921949
3. Jhuangwei Police Station
Tel: 03-9382162
4. Jhuangwei Fire Branch
Tel: 03-9380171
5. Police 110, FD 119
6. Road Department
Tel: 03-9882058

DPR Info.

1. Agency of Rural Development & Soil and Water Conservation, MOA
<https://www.ardswc.gov.tw/Home/>
2. Water Resources Agency, MOEA
<http://www.wra.gov.tw/>
3. Central Weather Administration
<https://www.cwa.gov.tw/V8/C/>
4. Yilan County FD
<http://fire.e-land.gov.tw/>
5. Jhuangwei Township Office
<https://www.jw.gov.tw/>

Shelters

Hongye Community Center
Area: 289.85square meters
Cap.: 61ppl.
Addr.: 69-2, Hongye Rd.
Contact: 呂立中
HU ZHENG WEI
Tel: 03-9383012#282



Legends	Disaster relevant		Facility	

Jhuangwei Township Office
March, 2024

Evac. Direction

Disaster warning sign spot

Indoor Shelter

Disaster category