

Yongchun Village Evacuation Route

No.1000203-016

DPR Info. List
Yongchun Vil. Info.

Population: 600

Disaster Response Unit

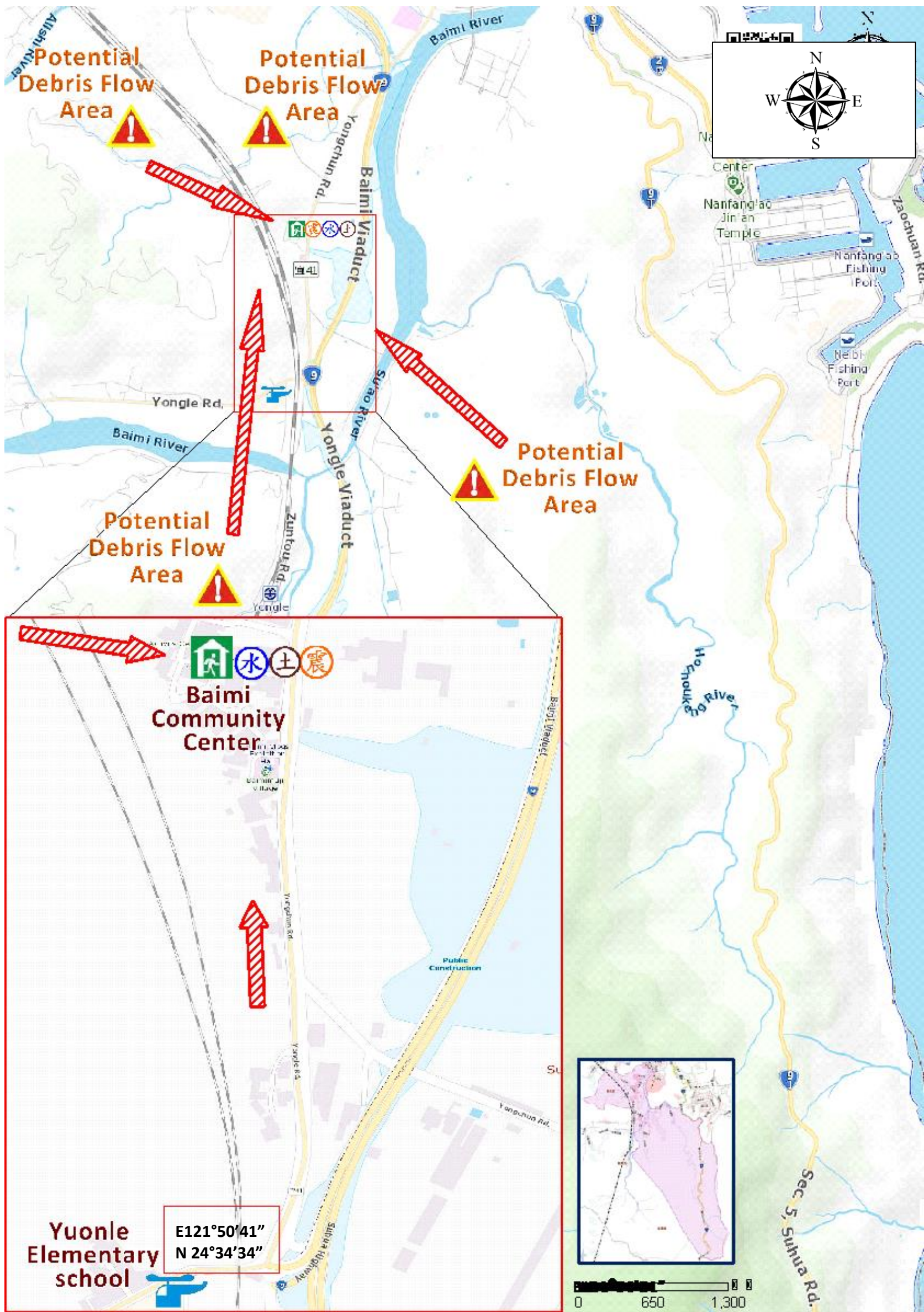
1. Suao Emergency Operation Center
Tel: 03-9973421
2. Chief of Village:張盛國
ZHANG SHENG GUO
Tel: 03-9964532
Cell: 0958-924119
3. Suao Police station
Tel: 03-9962126
4. Suao Fire Branch
Tel: 03-9964119
5. Police 110, FD 119
6. Road Department
Tel: 03-9982161~3

DPR Info.

1. Soil&Water Conserv.Bureau
<http://246.swcb.gov.tw/>
2. Water Resource Agency
<http://www.wra.gov.tw/>
3. Central Weather Bureau
<http://www.cwb.gov.tw/>
4. Yilan County FD
<http://fire.e-land.gov.tw/>
5. Suao Township Office
<http://suao.e-land.gov.tw/>

Shelters

Baimi Community Center
Area: 165square meters
Cap.: 40ppl.
Addr.: 11-1, Ln.134,
Yongchun Rd.
Contact: 粘翊晟
NIAN XU SHENG
Tel: 03-9973421#275



Made by Yilan County Fire Dep.
Suao Township Office
November, 2023

Legends	Disaster relevant		Facility		
	Evac. Direction	Disaster warning sign spot	Indoor Shelter	Disaster category	Helicopter Landing Zone