

Wanshan Village Evacuation Route

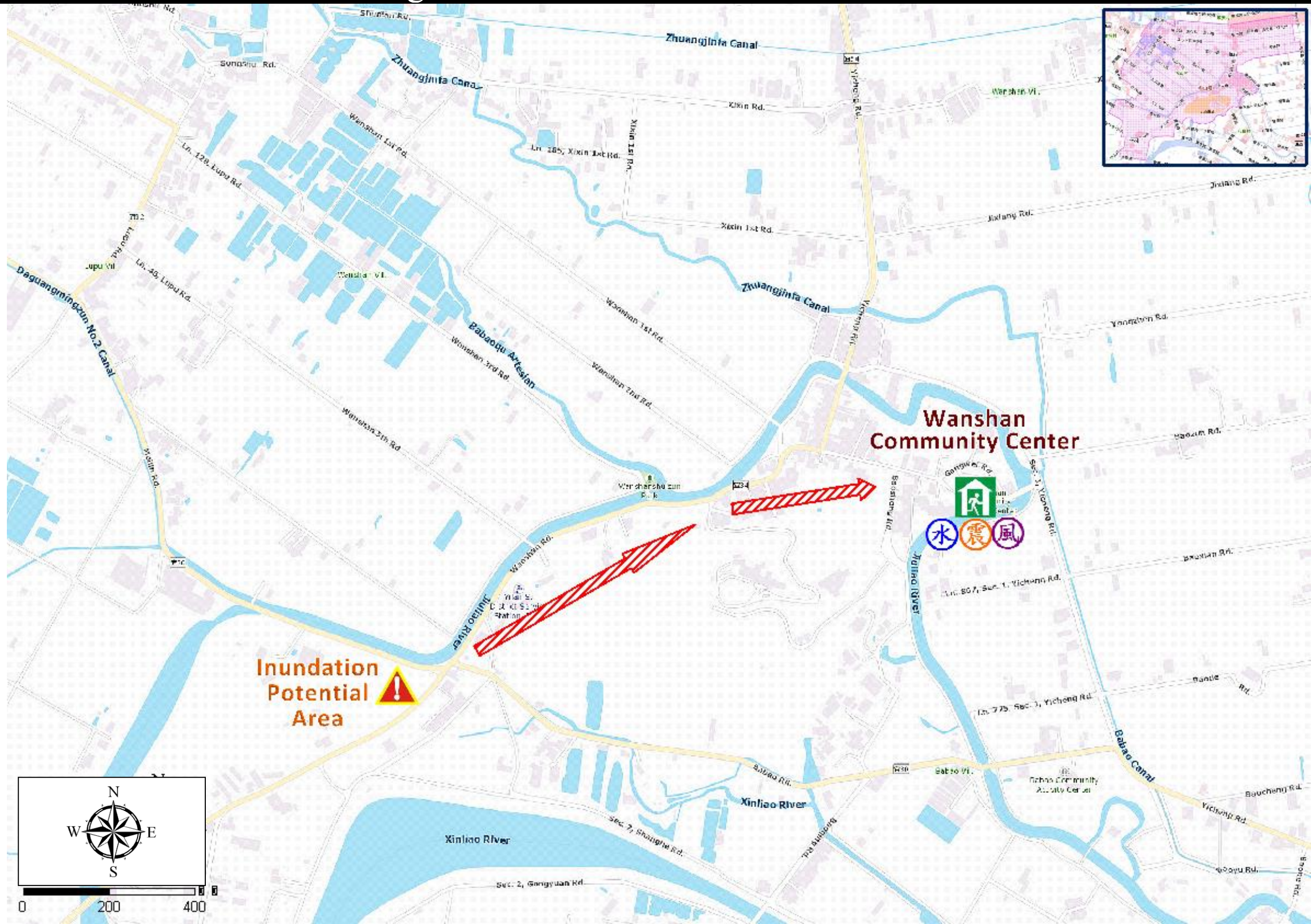
No.1000208-013

- DPR Info. List
Wanshan Vil. Info.
Population: 1,666
- Disaster Response Unit
1. Dongshan Emergency Operation Center
Tel: 03-9591105
 2. Chief of Village 江清鴻
JIANG QING HONG
Tel: 03-9583980
Cell: 0928-100522
 3. Shun'an Police station
Tel: 03-9581804
 4. Dongshan Fire Branch
Tel: 03-9593119
 5. Police 110, FD 119
 6. Road Department
Tel: 03-9882058





- DPR Info.
1. Soil&Water Conserv,Bureau
<http://246.swcb.gov.tw/>
 2. Water Resource Agency
<http://www.wra.gov.tw/>
 3. Central Weather Bureau
<http://www.cwb.gov.tw/>
 4. Yilan County FD
<http://fire.e-land.gov.tw/>
 5. Dongshan Township Office
<http://www.dongshan.gov.tw/>

Shelters

Wanshan Community Center
Area: 729.54square meters
Cap.: 154ppl.
Addr.: 98, Gangwei Rd.
Contact: 蕭順龍
SIAO,SHUN-LONG
Tel: 0928-268880

Made by Yilan County Fire Dep.
Dongshan Township Office
January, 2023

Legends	Disaster relevant		Facility	
	 Evac. Direction	 Disaster warning sign spot	 Indoor Shelter	 Disaster category